



Appendix B

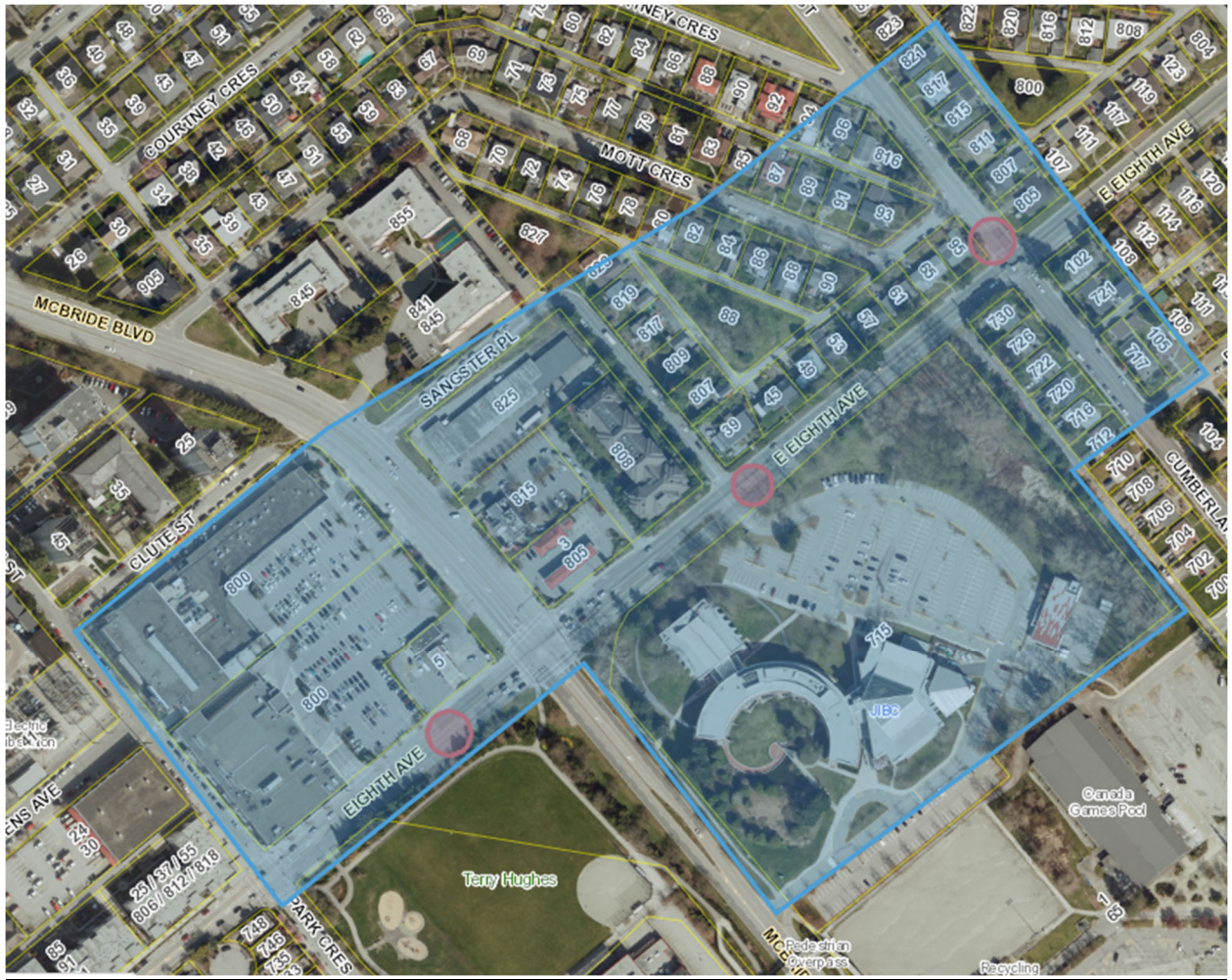
Sample of Previous Resident Notification

Appendix B

Sample of Previous Resident notification

<h1>Nighttime Work</h1> <h3>Sewer Video Inspections</h3> <p>METRO VANCOUVER, in coordination with its contractor, AquaCoustic Remote Technologies Inc, will be inspecting a sewer main in your neighbourhood.</p> <p>To complete the above-mentioned work, a small crew and work vehicle may be on site between the hours of 8:00 p.m. to 8:00 a.m. from <u> </u> Oct <u> </u> to <u> </u> Oct <u> </u>, 2020.</p> <p>During this period, workers will be videotaping the sewer interior between manholes. This process provides the contractor with a first-hand look at the deteriorating pipe conditions.</p> <p>Videotaping must be carried out during the early morning hours when sewer flows are at their lowest. Please note that this work is highly weather dependant.</p> <p>Associated activities are not expected to cause excessive noise or disturbance to area residents.</p> <p>Your patience and understanding during this work is appreciated.</p> <p>Contact Us For more information, please contact AquaCoustic Remote Technologies Inc at 604-730-8117.</p> <p>For after-hours emergencies, please call Michael Connelly at 778-231-9135.</p>  <p>SERVICES AND SOLUTIONS FOR A LIVABLE REGION</p>	<p>This notice contains important information that may affect you. Please ask someone to translate it for you.</p> <p>Ce document contient des renseignements importants qui pourraient vous concerner. Veuillez demander à quelqu'un de vous le traduire.</p> <p>此通告刊載有可能影響閣下的重要資料。請找人為你翻譯。</p> <p>ਇਸ ਨੋਟਿਸ ਵਿਚ ਮਹੱਤਵਪੂਰਨ ਜਾਣਕਾਰੀ ਹੈ ਜੋ ਕਿ ਤੁਹਾਡੇ ਲਈ ਜ਼ਰੂਰੀ ਹੋ ਸਕਦੀ ਹੈ। ਕਿਰਪਾ ਕਰਕੇ ਕਿਸੇ ਨੂੰ ਇਸ ਦਾ ਉਲੱਥਾ ਕਰਨ ਲਈ ਆਖੋ।</p> <p>Thông báo này có tin tức quan trọng có thể ảnh hưởng đến quý vị. Xin nhờ người phiên dịch hộ.</p> <p>Este aviso contiene información importante que puede afectarle personalmente. Pídale a alguien que se lo traduzca.</p>  <p>SERVICES AND SOLUTIONS FOR A LIVABLE REGION</p>
---	--

Map of the Notification Area



Work area has been circled in Red.