

Attachment 5

Site Characteristics and Context Information

Site Characteristics and Context

The property at 9 East Columbia Street is 24,200 square metres (260,486 square feet) in size and is a City owned park known as “The Great Lawn”. The park is primarily used by residents of Victoria Hill, although it also sees visitation from the community at large. The Central Valley Greenway, a pedestrian and cyclist path connecting New Westminster to Burnaby and Vancouver, passes through the property.

The frontage along East Columbia Street is the entire 316 metre (1,037 foot) width of the Victoria Hill neighbourhood. It has a 70 metre (240 foot) frontage along McBride Boulevard and meets the foot of Francis Way at the other end. A site context map and aerial image is provided in Figure 3 below.

There are several mature protected heritage trees in the park. No heritage trees are proposed to be removed, and impact would be carefully monitored throughout construction. The Woodlands Wall runs along the full length of the south side of the park, adjacent to East Columbia Street, with a shorter return on McBride Boulevard.

Once the replacement bridge is complete, it will be owned by the Province and the Province will take ownership of key intersections that control access to the new bridge, including the intersection of McBride Boulevard and East Columbia Street, adjacent to 9 East Columbia Street.

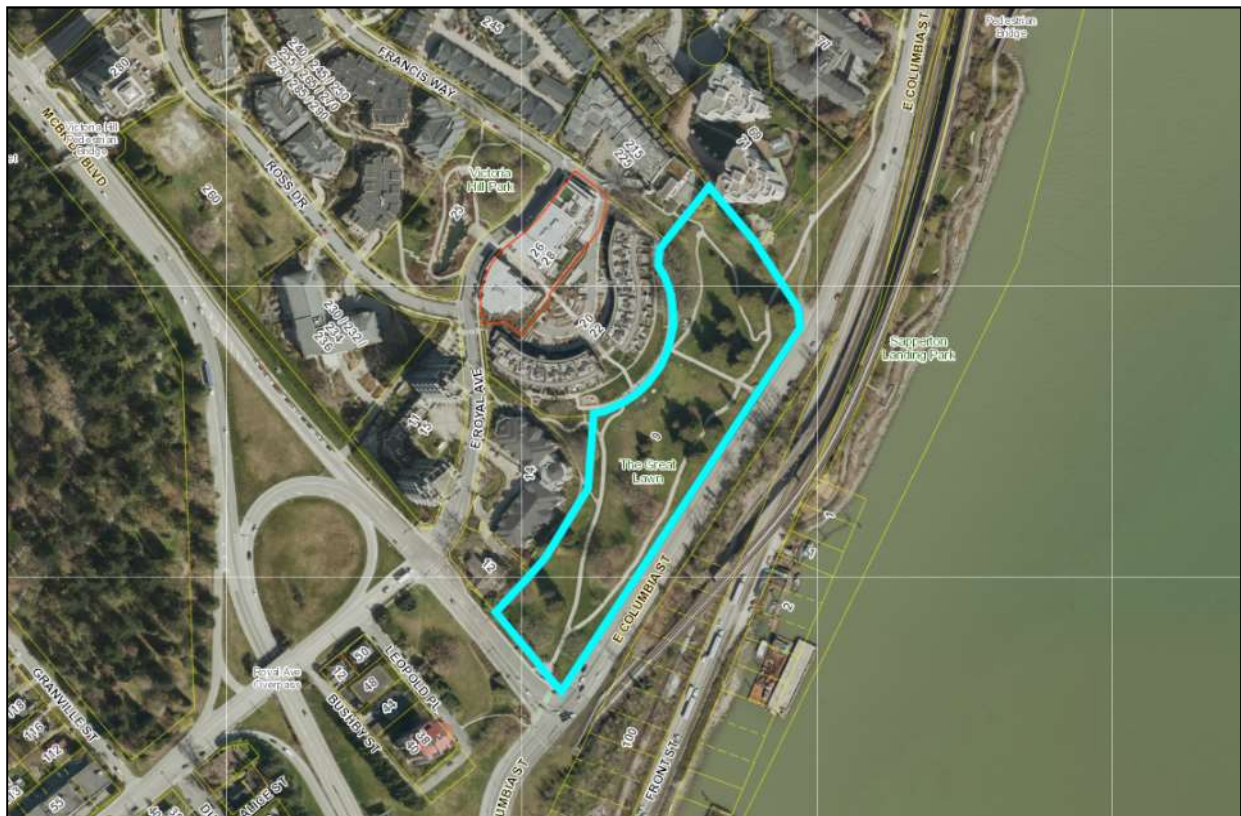


Figure 3: Site Context Map, with 9 East Columbia Street highlighted in blue



The following photos were taken and compiled by Donald Luxton & Associates between 2018 and 2020. Along with providing a contextual understanding of the impacted portion of the Woodlands Wall at the corner of East Columbia Street and McBride Boulevard, the photos also provide details of the wrought iron components.



Photo A-1: Corner of East Columbia Street and McBride Boulevard.

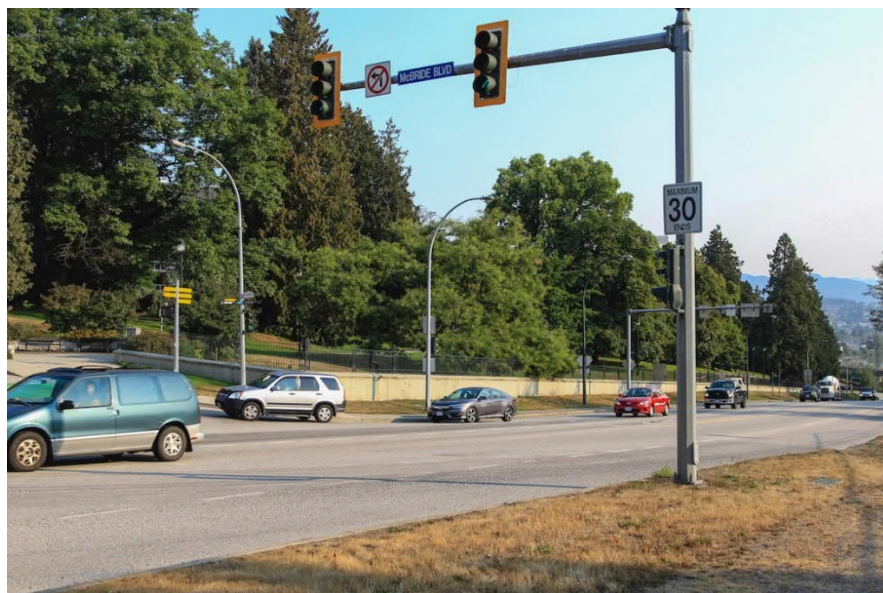


Photo A-2: Corner of East Columbia Street and McBride Boulevard.



Photo A-9: Woodlands Wall along McBride Boulevard.



Photo A-10: 2005/06-constructed plaza at terminus of Woodlands Wall.



Photo A-15: 2005/06-constructed plaza with terminus of Woodlands Wall on right.



Photo A-16: 2005/06-constructed plaza. Note: Iron fencing and granite block walls here are not historical.