

Attachment 4
Project Drawings

COPYRIGHT:
 All drawings, plans, specifications, reports, electronic data files, and working digital models (CAD files) prepared by or on behalf of SURF Architecture, are instruments of Service (O/S) and are the property of SURF Architecture. The recipient copyright for SURF Architecture's O/S belongs to SURF Architecture.
 SURF Architecture's O/S are developed for the exclusive use of its Clients and their authorized Project Team participants. The O/S are to be used exclusively on the particular Project for which they are developed and are not to be used for any other project work without prior written authorization of SURF Architecture.
 Due to the increased value of electronic data transfer and the ability of the computer to establish copies over the use thereof, SURF Architecture assumes no responsibility for any alterations, errors or omissions, consequential or otherwise, arising from such use. Hard copy O/S take precedence over electronic data files. O/S are used to document other than in the event that SURF Architecture's O/S are used for purposes other than intended, or if the O/S are amended, altered or revised in any manner whatsoever, without written consent of SURF Architecture or its authorized participants. Any use of the O/S for any other purpose is at the user's sole risk and the user agrees to indemnify, hold harmless and defend SURF Architecture from and against all claims, demands, losses, damages, liability and costs (including costs between architect and user) arising from such use.
 COPYRIGHT © 2021 SURF Architecture

PROFESSIONAL SEAL:

FIRE & SMOKE SEPARATIONS

- 2 HOUR
- 1 1/2 HOUR
- 1 HOUR
- 3/4 HOUR
- SMOKE SEPARATION (S.S.) (NO RATING)
- EXIT PATH
- EXIT SIGN

NO.	DATE	DESCRIPTION
5	MAR. 31, 2022	RESUBMITTED FOR
4	DEC. 22, 2021	DEVT. PERMIT APPLICATION
3	JUN. 21, 2021	DEVT. PERMIT APPLICATION
2	JUN. 04, 2020	DEVT. PERMIT APPLICATION
1	APR. 06, 2020	PRE-APPLICATION REVIEW

SURF ARCHITECTURE
 #204 - 1281 JOHNSTON RD.
 WHITE ROCK, BC V4B 3Y9
 TEL: 604.676.0646
 email: info@surfarchitecture.com
 www.surfarchitecture.com

CLIENT
UKRAINIAN CATHOLIC EPARCHY OF NEW WESTMINSTER

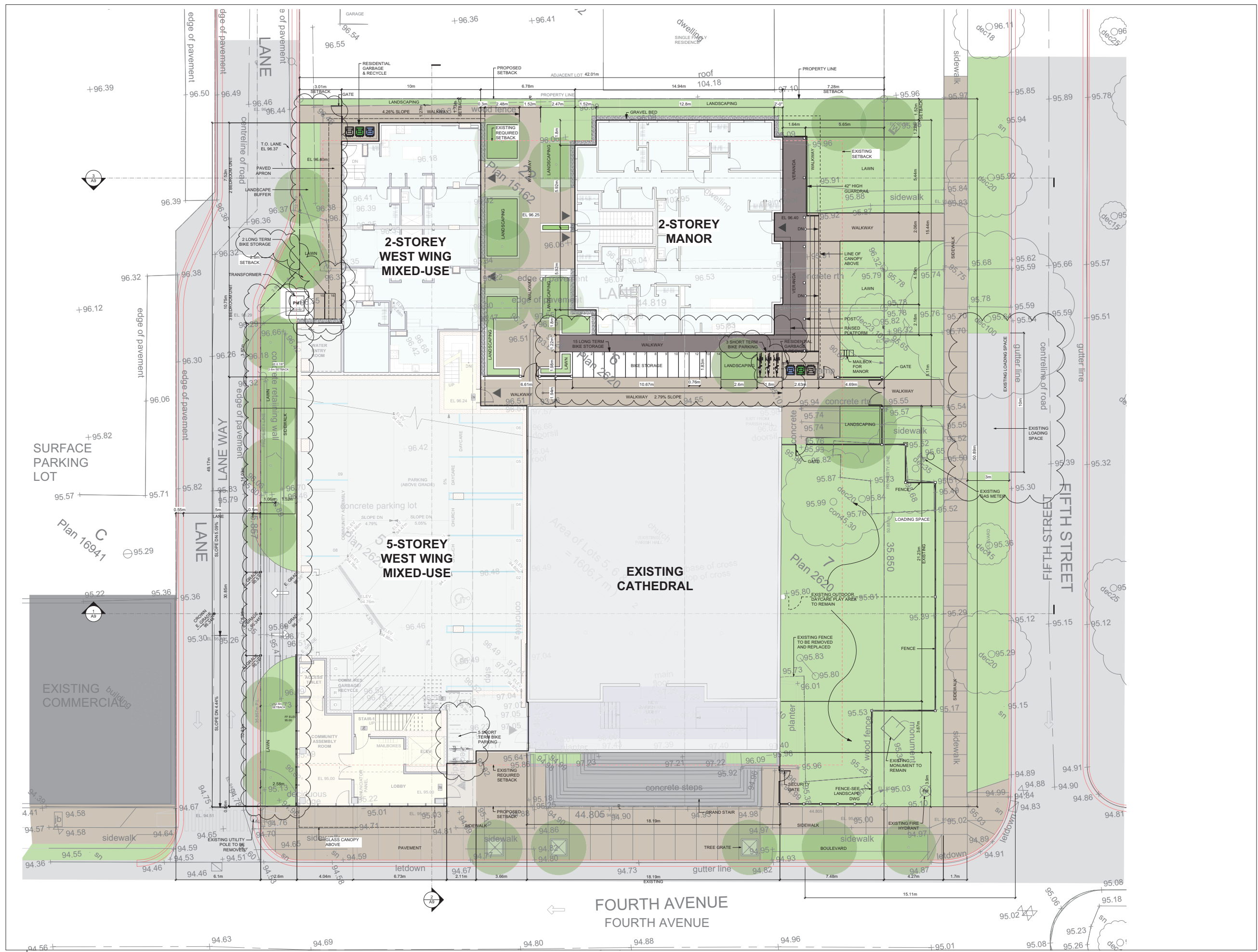
PROJECT
HOLY EUCHARIST CATHEDRAL MIXED-USE BUILDING

PROJECT ADDRESS
 501 4TH AVENUE
 NEW WESTMINSTER, BC V3L 2X6

DRAWING TITLE
SITE PLAN

PROJECT NO: 2019-13
 DRAWN BY: LC CHECKED BY: MK
 DATE: FEB. 11, 2021
 SCALE: AS SHOWN
 REVISION NO: DRAWING NO:

A1.0



1 SITE PLAN
 SCALE: 1/8" = 1'-0"

COPYRIGHT:
 All drawings, plans, specifications, reports, electronic data files, and working digital models (CAD files) prepared by or on behalf of SURF Architecture, are instruments of Service (O/S) and are the property of SURF Architecture. The entire copyright for SURF Architecture's O/S belongs to SURF Architecture.
 SURF Architecture's O/S are developed for the exclusive use of its Clients and their authorized Project Team participants. The O/S are to be used exclusively on the particular Project for which they are developed and are not to be used on any other project without the prior written authorization of SURF Architecture.
 Due to the increased volume of electronic data transfer and the liability of the originator to establish control over the use thereof, SURF Architecture assumes no responsibility for any alterations, errors or omissions.
 In the event that SURF Architecture's O/S are used for purposes other than intended, or if the O/S are amended, altered or revised in any manner whatsoever without written consent of SURF Architecture, the user assumes any responsibility for the information based on their own risk. Accepting the O/S provided constitutes acceptance of all conditions of use and the user agrees to indemnify, hold harmless and defend SURF Architecture from and against all claims, demands, losses, damages, liability and costs (including costs between solicitor and user) arising from such use.
 COPYRIGHT © 2017 SURF Architecture

PROFESSIONAL SEAL:

FIRE & SMOKE SEPARATIONS

- 2 HOUR
- 1 1/2 HOUR
- 1 HOUR
- 3/4 HOUR
- SMOKE SEPARATION (S.S.) (NO RATING)
- EXIT PATH
- EXIT SIGN

NO.	DATE	DESCRIPTION
5	MAR. 11, 2022	RESUBMITTED FOR DEVT. PERMIT APPLICATION
4	DEC. 22, 2021	RESUBMITTED FOR DEVT. PERMIT APPLICATION
3	JUN. 21, 2021	SUBMITTED FOR DEVT. PERMIT APPLICATION
2	JUN. 04, 2020	SUBMITTED FOR DEVT. PERMIT APPLICATION
1	APR. 06, 2020	SUBMITTED FOR PRE-APPLICATION REVIEW

SURF ARCHITECTURE
 #204 - 1281 JOHNSTON RD.
 WHITE ROCK, BC V4B 3Y9
 TEL: 604.616.0646
 email: info@surfarchitecture.com
 www.surfarchitecture.com

CLIENT
UKRAINIAN CATHOLIC EPARCHY OF NEW WESTMINSTER

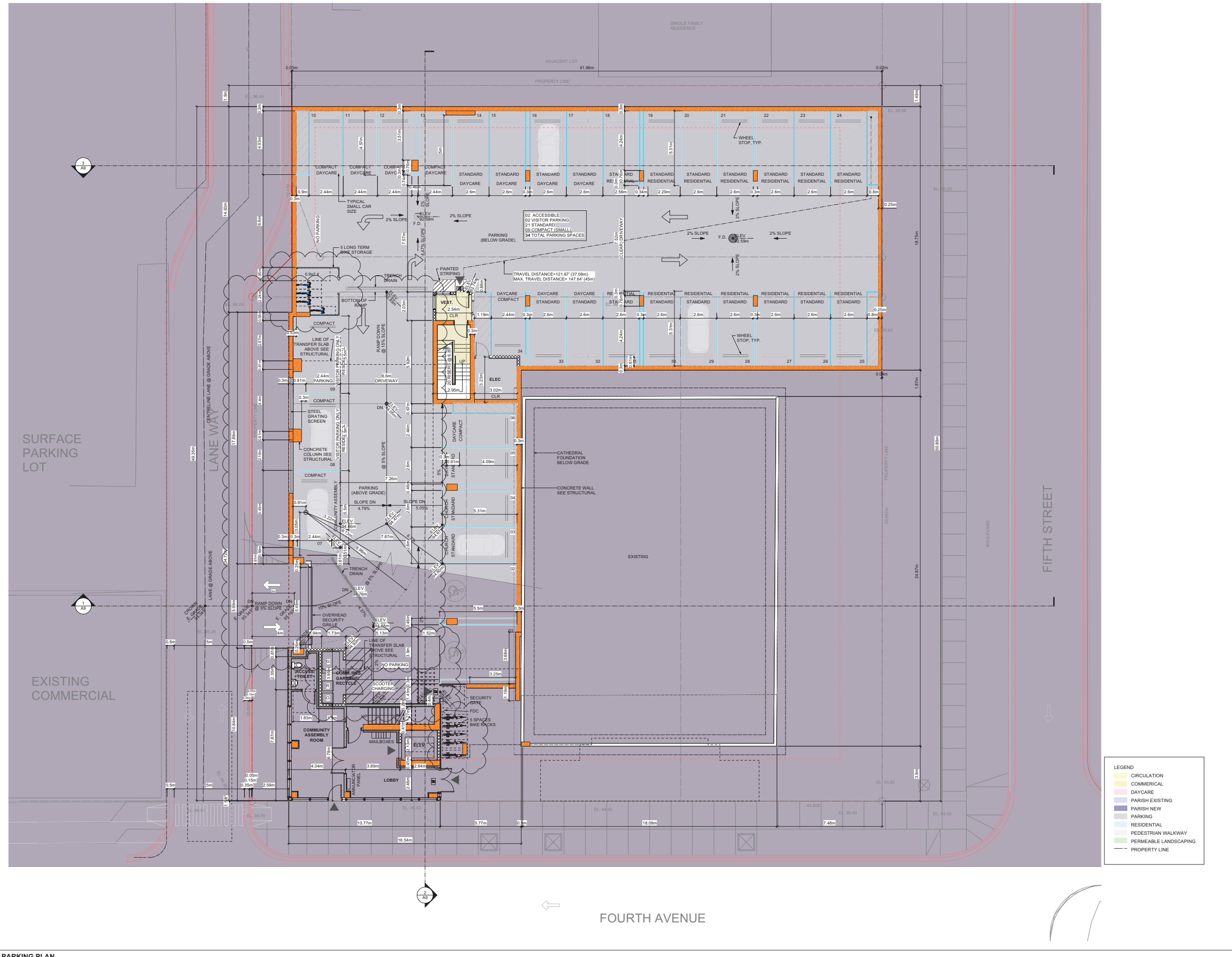
PROJECT
HOLY EUCHARIST CATHEDRAL MIXED-USE BUILDING

PROJECT ADDRESS
**501 4TH AVENUE
 NEW WESTMINSTER, BC V3L 2X6**

DRAWING TITLE
U/G PARKING PLAN

PROJECT NO:
 2019-13
 DRAWN BY: LC CHECKED BY: MK
 DATE: FEB. 11, 2021
 SCALE: AS SHOWN
 REVISION NO: DRAWING NO:

A2.0

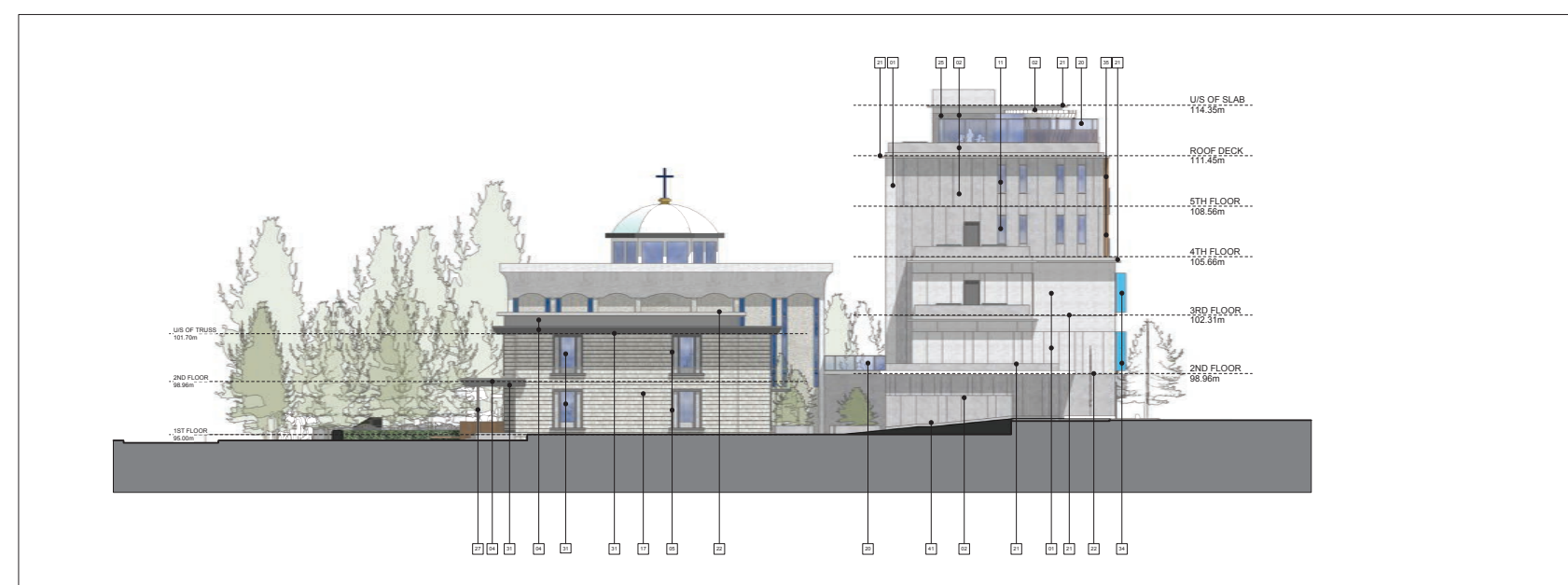


LEGEND

- CIRCULATION
- COMMERCIAL
- DAYCARE
- PARISH EXISTING
- PARISH NEW
- PARKING
- RESIDENTIAL
- PEDESTRIAN WALKWAY
- PERMEABLE LANDSCAPING
- PROPERTY LINE

1 PARKING PLAN
 A1.0 SCALE: 1/8" = 1'-0"

File Location:

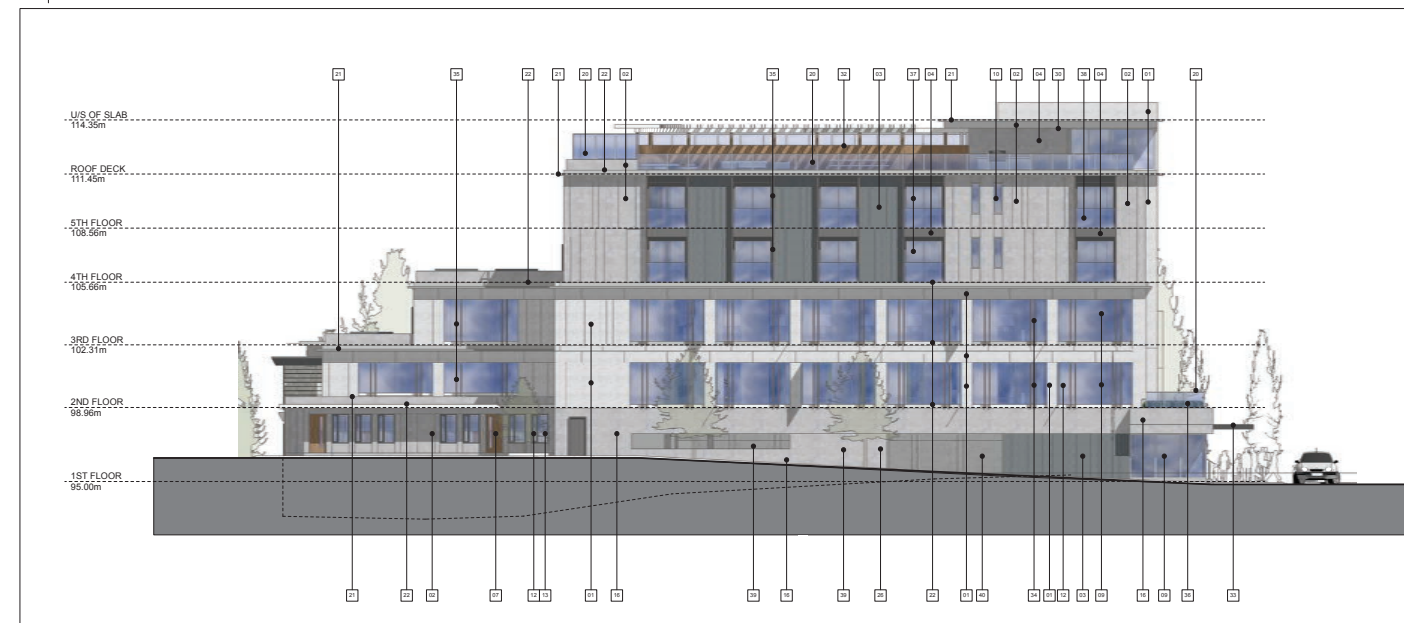


COPYRIGHT
All drawings, specifications, reports, documents and any other documents owned or created by the owner for the project are the property of SURF ARCHITECTURE INC. and shall remain the property of SURF ARCHITECTURE INC. No part of this document may be reproduced, stored in a retrieval system, or transmitted in any form or by any means, electronic, mechanical, photocopying, recording, or otherwise, without the prior written permission of SURF ARCHITECTURE INC.

PROFESSIONAL SEAL
The architect, engineer or other professional is not liable for any errors or omissions in this drawing or specification unless it is shown that such professional was negligent, and then only in respect to that negligence. This drawing and specification shall be read and interpreted as a whole and no part shall be construed in isolation.

- FIRE & SMOKE SEPARATIONS**
- 2 HOUR
 - 1 HOUR
 - 1 HOUR
 - 30 MIN
 - SMOKE SEPARATION (S&J) (AO)
 - EXIT PATH
 - EXIT SIGN

2 NORTH ELEVATION
SCALE: 1/8" = 1'-0"



- HEC EXTERIOR MATERIALS LEGEND**
- Fibre cement panel type 1 - textured light grey
 - Fibre cement panel type 2 - textured medium grey
 - Fibre cement panel type 3 - textured charcoal grey
 - Fibre cement panel type 4 - smooth and painted finish
 - Fibre cement plank trim board - smooth and painted finish
 - Clear anodized aluminum extrusion panel with medium glass
 - White zinc coated steel roof and window frames
 - Painted galvanized steel door in painted precast metal frame
 - Decorative glass panel window in anodized aluminum frame
 - Decorative glass panel window in anodized aluminum frame
 - Decorative window - anodized steel
 - Decorative window - anodized steel
 - Anodized aluminum extrusion panel type 1 - copper colour (brushed satin finish)
 - Anodized aluminum extrusion panel type 2 - metallic charcoal grey
 - Black polished and anodized steel column
 - Color anodized steel window frame with light grey stone
 - Exterior wood paneling - edge grain cedar (S&J) to be determined
 - Roofing
 - Glazed panel set in powder coated aluminum frame (span shown)
 - Existing smooth trim over old with new glazed panel
 - Pre finished metal railing type 1 - Puget Gray colour
 - Pre finished metal railing type 2 - Copper colour
 - Pre finished metal railing type 3 - Copper colour
 - Aluminum extrusion panel type 1 - Copper colour brushed satin finish
 - Painted brick column
 - Painted brick column
 - Painted brick column
 - Shaded cedar decking
 - Steel column
 - Steel beam - metal panels with wood grain pattern
 - Steel beam - metal panels
 - Steel type 2 - anodized steel plate
 - Precaution - under steel panels
 - Glazed canopy in painted and galvanized steel frame (P)
 - Decorative glass block with colored interlayer
 - Anodized aluminum extrusion cap - copper colour
 - Roofing panel with insulation and drainage
 - Roofing panel with
 - Glazed window
 - Glazed window
 - Overhead ceiling security grille
 - Roofing
 - New decorative exterior block
 - Steel frame cast in place concrete
 - 200 finishing medium grey colour
 - Structural grade down light grey coating to remain
 - Structural grade down light grey coating to remain
 - Timber deck (P) finish

NO.	DATE	DESCRIPTION
1	DEC 28, 2019	2019-13
2	JAN 27, 2020	2019-13
3	JUN 04, 2020	2019-13
4	JUN 04, 2020	2019-13
5	JUN 04, 2020	2019-13
6	JUN 04, 2020	2019-13
7	JUN 04, 2020	2019-13
8	JUN 04, 2020	2019-13
9	JUN 04, 2020	2019-13
10	JUN 04, 2020	2019-13
11	JUN 04, 2020	2019-13

SURF ARCHITECTURE

CLIENT
UKRAINIAN CATHOLIC
EPARCHY OF
NEW WESTMINSTER

PROJECT
HOLY EUCHARIST
CATHEDRAL
MIXED-USE BUILDING

PROJECT ADDRESS
501 4TH AVENUE
NEW WESTMINSTER, BC V2L 2N6

DRAWING TITLE
EXTERIOR ELEVATIONS

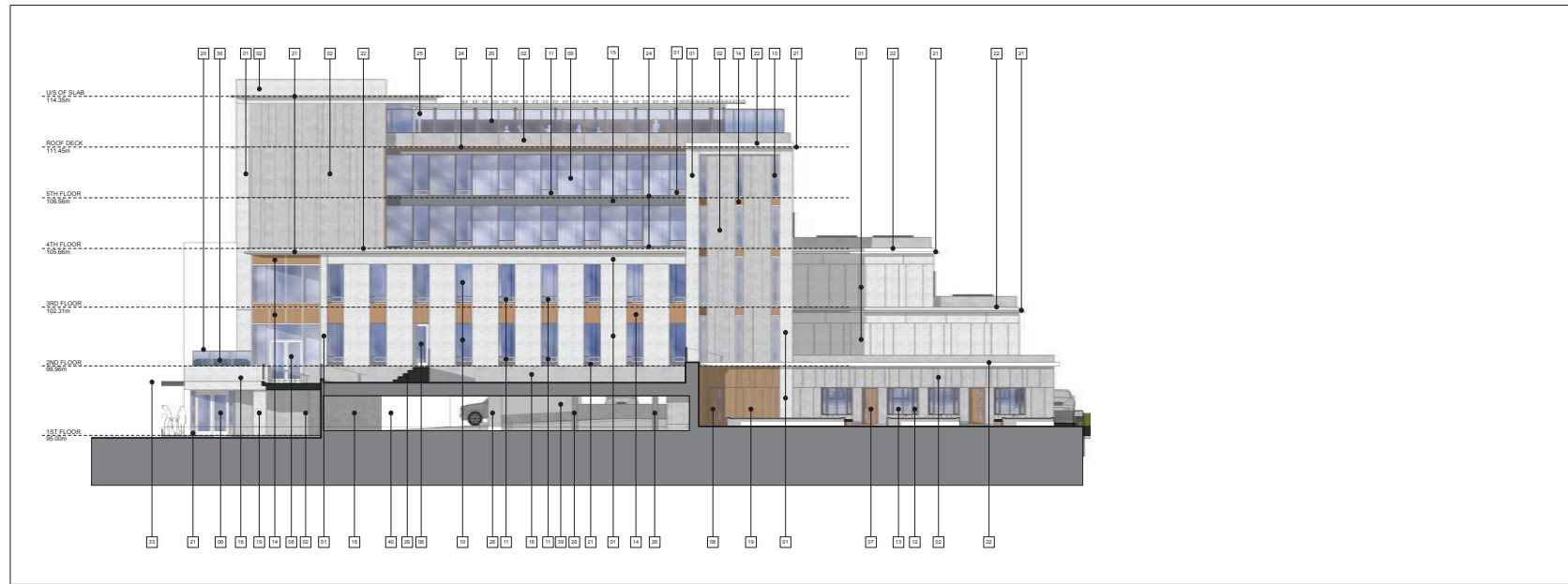
PROJECT NO
2019-13

DRAWN BY LC **CHECKED BY** MK

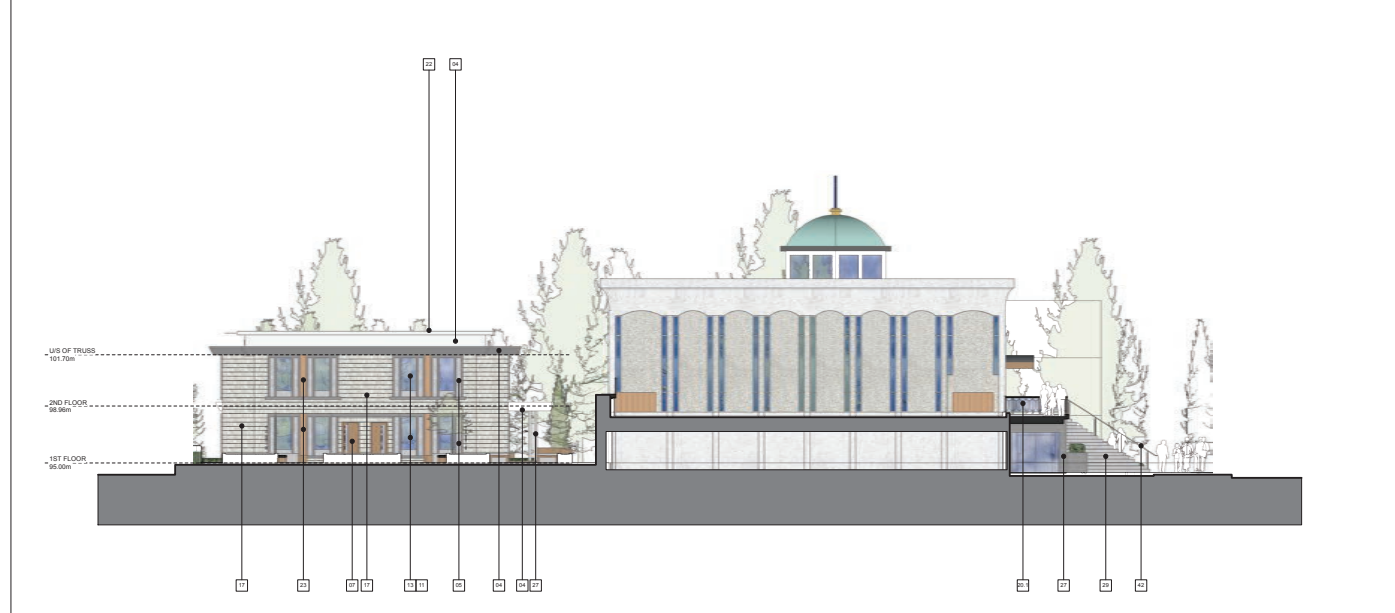
DATE
FEB. 11, 2021

SCALE
AS SHOWN

A4.1



2 EAST ELEVATION
SCALE: 1/8" = 1'-0"



1 WEST ELEVATION
SCALE: 1/8" = 1'-0"

NORTH

COPYRIGHT
All drawings, specifications, reports, schedules and other documents are the property of SURF ARCHITECTURE INC. and shall remain the property of SURF ARCHITECTURE INC. No part of this drawing may be reproduced, stored in a retrieval system, or transmitted in any form or by any means, electronic, mechanical, photocopying, recording, or by any information storage or retrieval system, without the prior written permission of SURF ARCHITECTURE INC.

PROFESSIONAL SEAL

FIRE & SMOKE SEPARATIONS

- 2 HOUR
- 1 1/2 HOUR
- 1 HOUR
- 3/4 HOUR
- SMOKE SEPARATION (S.S.) (NO)
- EXIT PATHS
- EXIT SIGN

- HEC EXTERIOR MATERIALS LEGEND**
1. Fibre cement panel type 1 - textured light grey
 2. Fibre cement panel type 1 - textured medium grey
 3. Fibre cement panel type 2 - textured charcoal grey
 4. Fibre cement panel type 4 - smooth and painted finish
 5. Fibre cement panel type 5 - smooth and painted finish
 6. Fibre cement panel type 6 - smooth and painted finish
 7. Glass insulating glass unit (IGU) with medium vision
 8. Glass insulating glass unit (IGU) with medium vision
 9. Glass insulating glass unit (IGU) with medium vision
 10. Double glazed porch windows in anodized aluminum frame
 11. Double glazed porch windows in anodized aluminum frame
 12. Double glazed porch windows in anodized aluminum frame
 13. Anodized aluminum operable panel type 1 - copper colour (brushed satin finish)
 14. Anodized aluminum operable panel type 2 - metallic charcoal grey
 15. Anodized aluminum operable panel type 3 - metallic charcoal grey
 16. Anodized aluminum operable panel type 4 - metallic charcoal grey
 17. Anodized aluminum operable panel type 5 - metallic charcoal grey
 18. Anodized aluminum operable panel type 6 - metallic charcoal grey
 19. Anodized aluminum operable panel type 7 - metallic charcoal grey
 20. Anodized aluminum operable panel type 8 - metallic charcoal grey
 21. Anodized aluminum operable panel type 9 - metallic charcoal grey
 22. Anodized aluminum operable panel type 10 - metallic charcoal grey
 23. Anodized aluminum operable panel type 11 - metallic charcoal grey
 24. Anodized aluminum operable panel type 12 - metallic charcoal grey
 25. Anodized aluminum operable panel type 13 - metallic charcoal grey
 26. Anodized aluminum operable panel type 14 - metallic charcoal grey
 27. Anodized aluminum operable panel type 15 - metallic charcoal grey
 28. Anodized aluminum operable panel type 16 - metallic charcoal grey
 29. Anodized aluminum operable panel type 17 - metallic charcoal grey
 30. Anodized aluminum operable panel type 18 - metallic charcoal grey
 31. Anodized aluminum operable panel type 19 - metallic charcoal grey
 32. Anodized aluminum operable panel type 20 - metallic charcoal grey
 33. Anodized aluminum operable panel type 21 - metallic charcoal grey
 34. Anodized aluminum operable panel type 22 - metallic charcoal grey
 35. Anodized aluminum operable panel type 23 - metallic charcoal grey
 36. Anodized aluminum operable panel type 24 - metallic charcoal grey
 37. Anodized aluminum operable panel type 25 - metallic charcoal grey
 38. Anodized aluminum operable panel type 26 - metallic charcoal grey
 39. Anodized aluminum operable panel type 27 - metallic charcoal grey
 40. Anodized aluminum operable panel type 28 - metallic charcoal grey
 41. Anodized aluminum operable panel type 29 - metallic charcoal grey
 42. Anodized aluminum operable panel type 30 - metallic charcoal grey
 43. Anodized aluminum operable panel type 31 - metallic charcoal grey
 44. Anodized aluminum operable panel type 32 - metallic charcoal grey
 45. Anodized aluminum operable panel type 33 - metallic charcoal grey
 46. Anodized aluminum operable panel type 34 - metallic charcoal grey
 47. Anodized aluminum operable panel type 35 - metallic charcoal grey
 48. Anodized aluminum operable panel type 36 - metallic charcoal grey
 49. Anodized aluminum operable panel type 37 - metallic charcoal grey
 50. Anodized aluminum operable panel type 38 - metallic charcoal grey
 51. Anodized aluminum operable panel type 39 - metallic charcoal grey
 52. Anodized aluminum operable panel type 40 - metallic charcoal grey
 53. Anodized aluminum operable panel type 41 - metallic charcoal grey
 54. Anodized aluminum operable panel type 42 - metallic charcoal grey
 55. Anodized aluminum operable panel type 43 - metallic charcoal grey
 56. Anodized aluminum operable panel type 44 - metallic charcoal grey
 57. Anodized aluminum operable panel type 45 - metallic charcoal grey
 58. Anodized aluminum operable panel type 46 - metallic charcoal grey
 59. Anodized aluminum operable panel type 47 - metallic charcoal grey
 60. Anodized aluminum operable panel type 48 - metallic charcoal grey
 61. Anodized aluminum operable panel type 49 - metallic charcoal grey
 62. Anodized aluminum operable panel type 50 - metallic charcoal grey
 63. Anodized aluminum operable panel type 51 - metallic charcoal grey
 64. Anodized aluminum operable panel type 52 - metallic charcoal grey
 65. Anodized aluminum operable panel type 53 - metallic charcoal grey
 66. Anodized aluminum operable panel type 54 - metallic charcoal grey
 67. Anodized aluminum operable panel type 55 - metallic charcoal grey
 68. Anodized aluminum operable panel type 56 - metallic charcoal grey
 69. Anodized aluminum operable panel type 57 - metallic charcoal grey
 70. Anodized aluminum operable panel type 58 - metallic charcoal grey
 71. Anodized aluminum operable panel type 59 - metallic charcoal grey
 72. Anodized aluminum operable panel type 60 - metallic charcoal grey
 73. Anodized aluminum operable panel type 61 - metallic charcoal grey
 74. Anodized aluminum operable panel type 62 - metallic charcoal grey
 75. Anodized aluminum operable panel type 63 - metallic charcoal grey
 76. Anodized aluminum operable panel type 64 - metallic charcoal grey
 77. Anodized aluminum operable panel type 65 - metallic charcoal grey
 78. Anodized aluminum operable panel type 66 - metallic charcoal grey
 79. Anodized aluminum operable panel type 67 - metallic charcoal grey
 80. Anodized aluminum operable panel type 68 - metallic charcoal grey
 81. Anodized aluminum operable panel type 69 - metallic charcoal grey
 82. Anodized aluminum operable panel type 70 - metallic charcoal grey
 83. Anodized aluminum operable panel type 71 - metallic charcoal grey
 84. Anodized aluminum operable panel type 72 - metallic charcoal grey
 85. Anodized aluminum operable panel type 73 - metallic charcoal grey
 86. Anodized aluminum operable panel type 74 - metallic charcoal grey
 87. Anodized aluminum operable panel type 75 - metallic charcoal grey
 88. Anodized aluminum operable panel type 76 - metallic charcoal grey
 89. Anodized aluminum operable panel type 77 - metallic charcoal grey
 90. Anodized aluminum operable panel type 78 - metallic charcoal grey
 91. Anodized aluminum operable panel type 79 - metallic charcoal grey
 92. Anodized aluminum operable panel type 80 - metallic charcoal grey
 93. Anodized aluminum operable panel type 81 - metallic charcoal grey
 94. Anodized aluminum operable panel type 82 - metallic charcoal grey
 95. Anodized aluminum operable panel type 83 - metallic charcoal grey
 96. Anodized aluminum operable panel type 84 - metallic charcoal grey
 97. Anodized aluminum operable panel type 85 - metallic charcoal grey
 98. Anodized aluminum operable panel type 86 - metallic charcoal grey
 99. Anodized aluminum operable panel type 87 - metallic charcoal grey
 100. Anodized aluminum operable panel type 88 - metallic charcoal grey
 101. Anodized aluminum operable panel type 89 - metallic charcoal grey
 102. Anodized aluminum operable panel type 90 - metallic charcoal grey
 103. Anodized aluminum operable panel type 91 - metallic charcoal grey
 104. Anodized aluminum operable panel type 92 - metallic charcoal grey
 105. Anodized aluminum operable panel type 93 - metallic charcoal grey
 106. Anodized aluminum operable panel type 94 - metallic charcoal grey
 107. Anodized aluminum operable panel type 95 - metallic charcoal grey
 108. Anodized aluminum operable panel type 96 - metallic charcoal grey
 109. Anodized aluminum operable panel type 97 - metallic charcoal grey
 110. Anodized aluminum operable panel type 98 - metallic charcoal grey
 111. Anodized aluminum operable panel type 99 - metallic charcoal grey
 112. Anodized aluminum operable panel type 100 - metallic charcoal grey

NO.	DATE	DESCRIPTION
1	2019-10-01	ISSUED FOR PERMITTING
2	2021-02-11	ISSUED FOR CONSTRUCTION
3	2021-02-11	ISSUED FOR CONSTRUCTION
4	2021-02-11	ISSUED FOR CONSTRUCTION
5	2021-02-11	ISSUED FOR CONSTRUCTION
6	2021-02-11	ISSUED FOR CONSTRUCTION
7	2021-02-11	ISSUED FOR CONSTRUCTION
8	2021-02-11	ISSUED FOR CONSTRUCTION
9	2021-02-11	ISSUED FOR CONSTRUCTION
10	2021-02-11	ISSUED FOR CONSTRUCTION

SURF ARCHITECTURE
ARCHITECTS
101-103 JENNIFER BLVD.
SUITE 2000, BC V6B 1P5
TEL: 604.273.4100
www.surfarchitecture.com

CLIENT
UKRAINIAN CATHOLIC EPARCHY OF NEW WESTMINSTER

PROJECT
HOLY EUCHARIST CATHEDRAL MIXED-USE BUILDING

PROJECT ADDRESS
501 4TH AVENUE
NEW WESTMINSTER, BC V3L 2N6

DRAWING TITLE
EXTERIOR ELEVATIONS

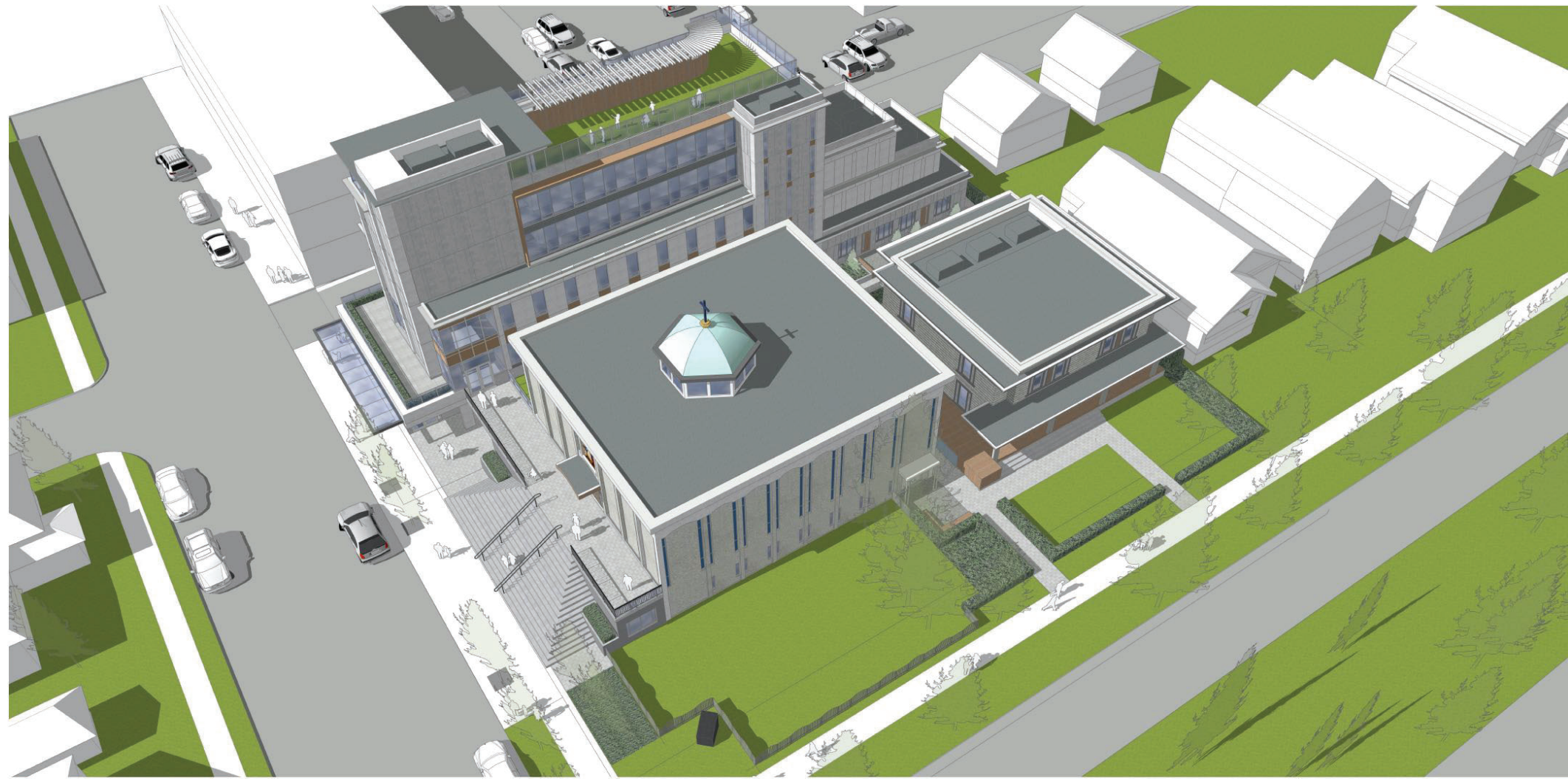
PROJECT NO.
2019-13

DRAWN BY LC **CHECKED BY** MK

DATE
FEB. 11, 2021

SCALE
AS SHOWN

A4.2



AERIAL VIEW WEST

COPYRIGHT: All drawings, plans, specifications, reports, electronic data files, and working digital models (CAD Files) prepared by or on behalf of SURF Architecture, are instruments of Service (IOS) and are the property of SURF Architecture. The exclusive copyright for SURF Architecture's IOS belongs to SURF Architecture. All IOS are developed for the exclusive use of the Client and their authorized Project Team participants. The IOS are to be used only on the particular Project for which they are developed and are not to be used on any other project without prior written authorization of SURF Architecture. Due to the increased value of electronic data transfer and the liability of the originator to establish control over the use thereof, SURF Architecture assumes no responsibility for any damage, when or otherwise, to the extent that SURF Architecture's IOS are used for purposes other than intended, or if the IOS are amended, altered or revised in any manner whatsoever, without written SURF Architecture's prior written consent. Anyone misusing this information does so at their own risk. Accepting the IOS provided, confirms acceptance of all conditions of use and the user agrees to indemnify, hold harmless and defend SURF Architecture from and against all claims, demands, losses, damages, liability and costs (including costs between solicitor and user) arising from such use. COPYRIGHT © 2021 SURF Architecture

PROFESSIONAL SEAL:

- FIRE & SMOKE SEPARATIONS**
- 2 HOUR
 - 1 1/2 HOUR
 - 1 HOUR
 - 3/4 HOUR
 - SMOKE SEPARATION (S.S.) (NO RATING)
- EXIT PATH
 EXIT SIGN

NO.	DATE	DESCRIPTION
4	DEC 22, 2021	RE-SUBMITTED FOR DEVT. PERMIT APPLICATION
3	JUN 21, 2021	SUBMITTED FOR DEVT. PERMIT APPLICATION
2	JUN 04, 2020	SUBMITTED FOR PRE-APPLICATION REVIEW
1	APR 06, 2020	SUBMITTED FOR PRE-APPLICATION REVIEW

ISSUES

SURF ARCHITECTURE
 #204 - 1281 JOHNSTON RD.
 WHITE ROCK, BC V4B 3Y9
 TEL: 604.616.0646
 email: info@surfarchitecture.com
 www.surfarchitecture.com

CLIENT
UKRAINIAN CATHOLIC EPARCHY OF NEW WESTMINSTER

PROJECT
HOLY EUCHARIST CATHEDRAL MIXED-USE BUILDING

PROJECT ADDRESS
 501 4TH AVENUE
 NEW WESTMINSTER, BC V3L 2X6

DRAWING TITLE
RENDERING

PROJECT NO:
 2019-13

DRAWN BY: L.C. CHECKED BY: M.K.

DATE:
 FEB. 11, 2021

SCALE:
 AS SHOWN

REVISION NO: DRAWING NO:
 AR6