

Appendix B:

*Heritage Assessment*

November 2021

## Introduction



The subject building is a single-family house located at 1121 Eighth Avenue in New Westminster, British Columbia. It has been evaluated in an objective manner to determine if it has heritage value. There are two types of documents that discuss the heritage value of a building: a Heritage Assessment and a Statement of Significance. A Heritage Assessment is a high-level evaluation to determine if a building has heritage value, while a Statement of Significance (SOS) is based on heritage value being already determined and identifies the details of that heritage value.

The heritage value of a place is determined by assessing if it has aesthetic, cultural, historic, scientific, social and/or spiritual importance or significance for past, present and future generations (using the *Standards and Guidelines for the Conservation of Historic Places in Canada*<sup>1</sup>). If present, these values would be embodied by character-defining elements typically identified as materials, forms, location, spatial configurations, uses and cultural associations or meanings. This document is an assessment and therefore does not go into the level of detail of an SOS, but it will make general statements regarding heritage value and character-defining elements.

An in-person site visit was made on November 13, 2021, during which photographs of the house were taken and the overall condition of the house was assessed. In-person research at the library and the Archives was not conducted given the Pandemic; however, online research has been carried out.

## Context

The property has the following site physical characteristics:

Site Area:	607 sqm (6,539 sq ft)	Floor Space Ratio:	0.171
Frontage:	15.33 m (50.30 ft)	Site Coverage:	10.79%
Average Depth:	39.62 m (129.99 ft)		

The property is zoned Single-Family Residential (NR-1), the intent of which is to “to allow single detached dwellings, secondary suites, and laneway or carriage houses in the West End, Kelvin and Connaught neighbourhoods.”<sup>2</sup>

---

<sup>1</sup> *The Standards and Guidelines for the Conservation of Historic Places in Canada*, Second Edition, 2010. p. 5.

<sup>2</sup> City of New Westminster Zoning Bylaw, Section 320.

The property is identified in the Official Community Plan as (RD) Residential – Detached and Semi-Detached Housing, the purpose of which is: “to allow low density ground oriented residential uses including gentle infill which increases housing choice and retains existing neighbourhood character.”<sup>3</sup> For more details on the expectations for this Zoning category and the OCP designation, please consult with the City’s Planning Division.

The property is located in the West End neighbourhood, on the north<sup>4</sup> side of Eighth Avenue, near the corner of Eighth Avenue and Twelfth Street. To either side of the street are other single-family houses that were constructed in various time periods, ranging from 1893 to 2020.



Map Courtesy of City Views (CNW) V. 3.0



Map Courtesy of Google Maps, 2021

<sup>3</sup> City of New Westminster Official Community Plan – Mainland Use Designations, p. 3.

<sup>4</sup> Project North



**Photographs of the Subject Building (November 2021)**



*Project South (Front) Elevation*



*Project North (Rear) Elevation*



*Project East (Side) Elevation*



*Project West (Side) Elevation*



## The Building

The building, according to the City's Development Site Report, was constructed in 1909 for Margaret Callow. The style is Gabled Vernacular<sup>5</sup>, which was popular between about 1886 and 1915 in the Lower Mainland. The subject building has the following typical characteristics of this style:

- 2-storey square massing
- Front-gabled roof (with bellcast eaves)
- Main floor is ½ storey above the ground
- Full-width front porch with shallow hipped roof
- Narrow lap siding, with a pronounced channel
- Front door set on one side (to line up with the front stairs)
- Few decorative elements

The house differs from the typical style characteristics by not having a roof skirt across the bottom of the gable, by having a medium-pitch rather than a steeply pitched roof, and by having front porch posts which are square rather than round Tuscan-style.

The front elevation is asymmetrical, with the front door on the right side and accessed by wood stairs that are directly in front of it. The front door is a two-panel wood door with a set up triple lights on the upper panel, typical during the period 1911-1931<sup>6</sup> in North America. There are three windows on the front elevation: a large picture window with a stained-glass transom adjacent to the front door, and two vertical single-hung matching windows on the second storey. The picture window is typical cottage window for the period 1904-1912<sup>7</sup> in North America.

There are few windows on the side elevations. On the east elevation, there is only one vertical single-hung window on the upper level. On the west elevation, there are two vertical single-hung windows.

The rear elevation has a covered porch at-grade supported by three plain and square wooden posts. The roof of this porch is shallow and extends from a roof that also covers a one-storey addition. There are two windows on the upper storey that match those on the front elevation. There is a similar-style vertical window on the lower level and a small horizontal window adjacent to the back door.



*Picture Window with Stained-glass Transom*

---

<sup>5</sup> Vancouver Heritage Foundation – House Styles Webpage

<sup>6</sup> Herbert Gottfried and Jan Jennings. American Vernacular Architecture: Buildings and Interiors 1870-1960. W.W. Norton & Company Inc. New York/London, 2009, p. 368.

<sup>7</sup> Ibid, p. 359.



Most all of the windows appear to be original, with wood frames, casings, and sills. Most of the meeting rails in the windows have horns.

The house is clad, as noted above, in channelled lap wood siding. It has a wood belt course, indicating the level at which the first floor sits. There are corner boards and vergeboards, also all wood. The roof is a medium, front facing gable with bellcast eaves.



According to City records, the house underwent substantial renovations in 2009, during which the front porch was rebuilt, a new rear deck was added, and the main floor, including a bathroom, were renovated. Additionally, that year, a new detached, double carport was constructed in the rear of the property and accessed from the rear lane.

The building is sited towards the front of the property and close to the side property line. The side yard is fenced from the front and has a row of mature shrubs which gives the yard privacy from the street. There is a large, mature Maple tree beside the house.

## Heritage Value and Evaluation

### Heritage Value

#### *First Owner/Developer*

City documents show that the house is attributed to Margaret Callow.

Between the year the house was constructed (1909) and 1955 (the last year the Directories are available on-line), there was only one family that owned the house, the Callow Family.

Margaret Callow (nee Cottier, 1839 – 1915) is identified as the “developer”, which means that she had the house built. She was married to Thomas, who passed away at some point before 1909<sup>8</sup>. Both of them were from the Isle of Man. Together, Margaret and Thomas had four children: Charles, Edward, Julia and another daughter (Mrs. E. Richardson of Edson, Alberta in 1941)<sup>9</sup>.

Charles Callow was born in Toronto in 1874. He came to British Columbia in 1906 at the age of 32 and moved to New Westminster in 1910. According to the on-line Directories, his occupation was as a labourer. According to his death certificate, he last worked in 1940. Beside: “Kind of Industry or Business”, is written the term: “Relief”. He died in 1941 at the age of 66.

<sup>8</sup> No on-line records could be found for Thomas Callow.

<sup>9</sup> See Charles’ death certificate, NWMA, Item # 59.

Edward Callow was born in Winnipeg in 1878. He came to British Columbia in 1904 at the age of 26 and moved to New Westminster in 1907. According to the on-line Directories, his occupation was as a labourer, and according to his death certificate, he worked in the brick laying industry. He died in 1952 at the age of 73.

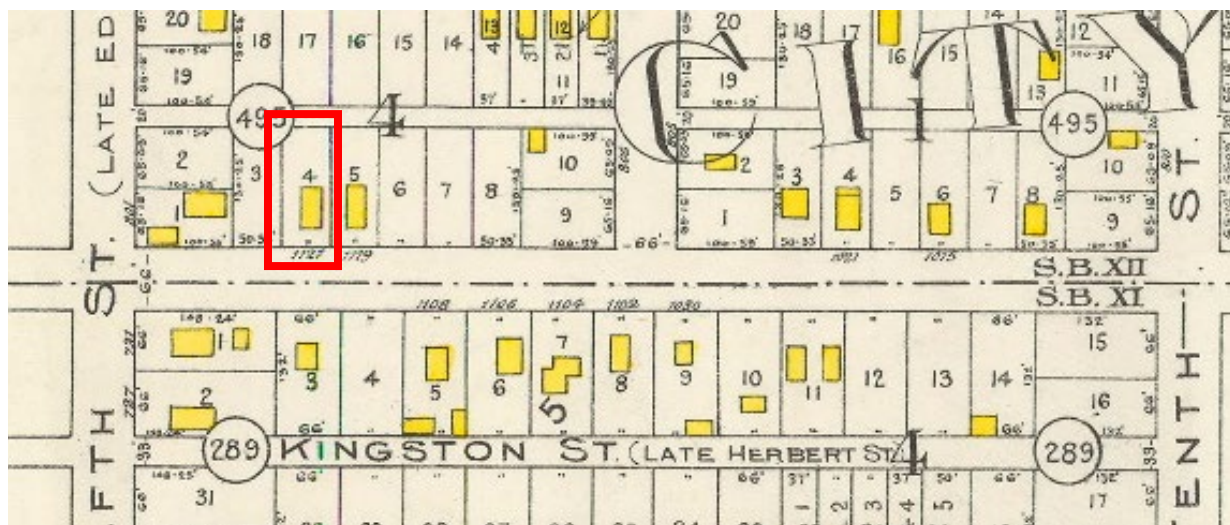
Julia Callow is listed in the on-line Directories as living in the house during the time period 1911 – 1955+, but no occupation is listed for her. It appears she did not marry, as she is often listed as “Miss”. There are no on-line vital statistic documents for her.

A search was made of the New Westminster Museum and Archives, the City of Vancouver Archives, the City of Burnaby Archives and the Vancouver Public Library for historic photographs of the family and of the house, but none were found.

In order to discover if there is more information about any of these people, more time than is available for the writing of a Heritage Assessment would be required.

#### *Historic Map*

The subject house is evident on Plate 116 of Goad's Atlas of the City of New Westminster, published in 1913. The excerpt below shows the house, with its correct and current address, along with the next-door house at 1119 Eighth Avenue.



*Excerpt of Goad's Atlas of the City of New Westminster, 1913, Plate 116*



## Heritage Value – Standards and Guidelines for the Conservation of Historic Places in Canada

The heritage value of the subject house has been assessed based on possible aesthetic, historic/cultural, scientific, social and/or spiritual importance or significance for past, present and future generations, as per the “Standards and Guidelines”. *See the definitions of these values in Appendix A.* As noted above, a more in-depth study and listing of values, if present, would form part of a Statement of Significance. For this Heritage Assessment, the following summary is provided.

The house is not listed on either the Heritage Inventory or the Heritage Register, nor is it formally protected with any form of heritage bylaw.

The house has historic value for its age (1909) and aesthetic value for its Gabled Vernacular style, in particular for retaining such character-defining elements as its overall form and massing, its gabled roof with bellcast eaves and vergeboards, wood lap siding, original wood windows, and front porch with posts and wood balustrade (even though this is recent, it likely replicates or is very close to what was there originally). Also of value is that there was one family that owned the property from 1909 through at least 1955.

There is social value for its contribution to the community’s sense of identity and scientific value for its contribution to the understanding and/or appreciation of the time when the house was constructed, especially given that the house is situated on a busy street near an important intersection. There is no known spiritual value associated with the structure, but to determine if there is spiritual value associated with it or with the land upon which it sits would require consultation with First Nations and other cultural groups.

### **Conclusion**

After assessing the heritage value of the building, it is the recommendation of this heritage professional that the property has considerable heritage value. It has retained its original design and character-defining elements and was well maintained over the years, (however at present, the condition of the house is declining). It is a strong candidate for retention through a Heritage Revitalization Agreement (HRA). Given that the house has a small footprint and is located in the front corner of the property, it should be possible to construct a new house beside it, utilizing an HRA that could allow for more density on this site than what is permissible outright. There may even be room for a small carriage house behind both the subject house and a possible new infill house, which would be in keeping with the Official Community Plan designation. The size of the lot, its location near public transit, the existence of a rear lane, and the siting of the house in the front corner of the property, all combine to create redevelopment possibilities that would benefit both the owner and community.

*JSchueck*

Julie Schueck, CAHP Professional Member  
Principal, Schueck Heritage Consulting  
julie@schueckconsulting.com 778-838-7440

## Appendix A: Definitions

The following definitions of heritage value are quoted directly from the “Canadian Register of Historic Places: Writing Statements of Significance” guide:

Aesthetic value refers to the sensory qualities of a historic place (seeing, hearing, touching, smelling and tasting) in the context of broader categories of design and tradition. A place may have aesthetic significance because it evokes a positive sensory response, or because it epitomizes a defined architectural style or landscape concept. Visual aesthetic value is typically expressed through form, colour, texture or materials. It is possible for historic places to have other aesthetic values as well, such as auditory ones. Historic places with aesthetic significance may reflect a particular style or period of construction or craftsmanship, or represent the work of a well-known architect, planner, engineer or builder.

Historical and cultural values are sometimes combined and refer to the associations that a place has with past events and historical themes, as well as its capacity to evoke a way of life or a memory of the past. Historical or cultural value may lie in the age of a heritage district, its association with important events, activities, people or traditions; its role in the development of a community, region, province, territory or nation; or its patterns of use. Historical or cultural value can lie in natural or ecological features of the place, as well as in built features.

Scientific value refers to the capacity of a historic place to provide evidence that can advance our understanding and appreciation of a culture. The evidence is found in the form, materials, design and/or experience of the place. Scientific value can derive from various factors, such as age, quality, completeness, complexity or rarity. Scientific value may also be present when the place itself supplements other types of evidence such as written sources, such as in archaeological sites.

Social value considers the meanings attached to a place by a community in the present time. It differs from historical or cultural value in that the value may not have an obvious basis in history or tradition and relates almost entirely to the present time. Social value may be ascribed to places that perform a key role within communities, support community activities or traditions, or contribute to the community’s sense of identity. Places with social value include sites that bring the community together and create a sense of shared identity and belonging.

Spiritual value is ascribed to places with religious or spiritual meanings for a community or a group of people. Sacred and spiritual places could include places of mythological significance, landscape features associated with myth and legends, burial sites, rock cairns and alignments, fasting/vision quest sites etc., places representing particular belief system(s) or places associated with sacred traditions, ceremonial practices or rituals of a community/group of people.<sup>10</sup>

---

<sup>10</sup> Historic Places Program Branch, “Canadian Register of Historic Places: Writing Statements of Significance,” Parks Canada, November 2006, pp. 12-13.

# MODERN OFFICE SUPPLY CO., LTD

Desks, Chairs, Tables and Filing Devices in Wood and Steel  
COMMERCIAL STATIONERY. OUR SPECIALTY

163 PENDER STREET W. Between Abbott and Cambie PHONE 562



MOORE LIGHT

916-918  
Pender St. W.  
Vancouver  
and  
Regina, Sask.  
and  
Seattle, Wash.

1356 Buttes HENDERSON'S NEW WESTMINSTER Campbe

## The Thiel Detective Service Co.

OF CANADA, LIMITED

WILLIAM MCLEOD, MANAGER

Office: 35-36 Fairfield Bldg.

445 Granville Street Phone 4887

Buttes L E wireman B C El Ry h 314  
1st  
Byers John lab rms 505 Agnes  
Byrne Margaret lvs 1020 5th Ave  
Byrne Peter real estate h 1020 5th Ave  
Byzandion Cafe, George Nikitas prop  
623 Clarkson lvs same

## C

Caatham Wm C prin Boys Central  
School lvs 419 9th  
Cable Abraham cigarmkr lvs Fraser  
Hotel  
Caddell Frederick emp B C & T Co  
h 529 10th  
Caddell Mary C laundry lvs 529 10th  
Caddell Minnie starcher 814 Royal Ave  
lvs 523 10th  
Caddell R Alfred fireman lvs 529 10th  
Caddell Susan (wid Richard) h 529 10th  
Caddell T Henry fireman lvs 529 10th  
Caden Sydney guard G N Ry Co h s s  
Columbia nr Keary  
Cairns A E foreman Brunette Saw  
Mills Co lvs 355 Keary  
Cairns Fred clk A W McLeod lvs 224  
7th  
Calbick Charles janitor Court House lvs  
208 5th Ave  
Calbick Edith H steno Land Registry  
Office lvs 122 2nd  
Calbick Frank H carp lvs 122 2nd  
Calbick John A carp h 122 2nd  
Calbick Mildred rms 611 5th  
Calbick Wilbert W carp lvs 122 2nd  
Calbick W clk J H Todd lvs 208 5th  
Calder D canner rms 663 Front  
Calder John C P R watchman h 729 5th  
Ave  
Calderwood Virgie milliner H G Moore  
lvs 1614 6th Ave  
Caldwell James retired h 209 5th Ave  
Caldwell John porter Russell Hotel  
Calhoun A lab h 3-4, 233 11th  
Calhoun A emp B C T & T Co h 809  
Milton  
Callan Charles E salesman lvs 211 Col-  
umbia  
Callanan Joseph physician h 124 7th  
Callon Charles lab h 1121 8th Ave  
Callon Edward lab lvs 1121 8th Ave  
Callon Julia lvs 1121 8th Ave  
Cambie David clk W J Kerr Ltd lvs  
731 6th  
Cambridge John J dist registrar of  
supreme court and registrar of coun-  
ty court Court House lvs 87 4th  
Cambridge Thomas H asst bursar In-  
sane Asylum h 320 Cedar

Cameron Annie dressmkr 315 2nd lvs  
same  
Cameron Charles C emp city h 31  
Cedar  
Cameron Christopher T cond B C El R  
h 342 Keary  
Cameron Daniel A cabinetmkr W  
Fales lvs 612 Agnes  
Cameron David S tmstr Belyea & C  
h 727 4th  
Cameron Donald of Cleveland & Came-  
ron lvs N Vancouver  
Cameron Emma M dressmkr 7, 552 Col-  
umbia lvs 329 Columbia  
Cameron F W asst trainmaster B  
El Ry lvs cor 10th Ave and 13th  
Cameron Frank E mgr Westminster  
Transfer Co h 611 Liverpool  
Cameron George prop Liverpool Arm  
h 23, 411 Columbia  
Cameron James S chief mail carrie  
P O lvs 48 Bushby  
Cameron Jesse C watchmkr J B Gra-  
lvs 604 Columbia  
Cameron Joseph farmer h 328 Keary  
Cameron Norman D of Lytton Hote  
lvs 441 Keefer  
Cameron S rms 1013 Quebec  
Cameron Wm A guard B C Penitentiary  
h 457 Columbia E  
Cameron Wm R driver lvs 611 Liver-  
pool  
Campbell Alexander blksmith 472 Fader  
Campbell Angus carp h 303 Princess  
Campbell Angus carp rms 832 Royal  
Ave  
Campbell August carp Gálbraith & Sons  
Campbell B lab rms 1011 Royal Ave  
Campbell Catherine dom 410 3rd  
Campbell Daniel staty eng Royal City  
Mills lvs 1011 Royal Ave  
Campbell Daniel tailor H Robertson lvs  
604 Columbia  
Campbell Douglas tmstr rms 1011  
Royal Ave  
Campbell Elsie dom 731 6th  
Campbell Ethel G bkpr Denny & Ross  
lvs 416 4th Ave  
Campbell Eva M clk T B Green lvs  
472 Fader  
Campbell F lab lvs 903 Columbia  
Campbell George real est rms Guichon  
Rooms  
Campbell Hugh clk lvs 1012 7th Ave  
Campbell Hugh G emp City h 1401  
Nanaimo  
Campbell Ida maid lvs 417 3rd Ave  
Campbell Isabella (wid Allan) lvs 45  
Dufferin  
Campbell James brklyr rms 445 6th  
Campbell John painter lvs 216 St Pat-  
rick  
Campbell John C tmstr rms 823 12th  
Campbell John H millwright h 1012  
7th Ave  
Campbell John M millwright Schaae  
Mach Works lvs 419 Cumberland  
Campbell Julia lvs 1401 Nanaimo  
Campbell J H millwright S & B Lum  
Co rms 34 McKenzie  
Campbell Katherine A M milliner Con-  
nor & McQuarrie lvs 1410 Nanaimo  
Campbell Kenneth M tallyman B C T  
& T Co lvs 422 6th

## Mercantile Towel Supply Co.

ARTHUR J. COURTNEY, Manager

556 Richards St. Telephone 670

SANITARY TOILET CABINETS

Clean Towels Daily

Prompt and Efficient Service

Rates Average 4¢ & \$1.25 per month.

Henderson's Greater Vancouver Directory, Part 2, p. 1356. Note that their last name has been misspelled as "Callon", a fairly common occurrence in Directories.



Year <b>1941</b>	<b>S. BOWELL &amp; SON</b>	Month <b>January</b>
No. <b>29-A</b>		No. <b>29</b>

Name of Deceased <b>CHARLES CALLOW.</b>		
Address <b>1121-8th Ave., New Westminster, B. C.</b>		
Place of Death <b>1121-8th Ave., New Westminster, B. C.</b>	Date of Death <b>January 26/41</b>	
Sex <b>Male</b>	Nationality <b>Canadian</b>	Racial Origin <b>British (Manx)</b> Marriage State <b>Single</b>
Birthplace <b>Toronto, Ontario</b>		
Date of Birth <b>June 16, 1874.</b>	Age <b>66-7-10.</b>	
How Long at (a) Place of Death <b>31 years</b>	(b) In Province <b>35 years</b>	(c) In Canada <b>life</b>
Occupation <b>Labourer</b>		
Kind of Industry or Business <b>Relief</b>		
Date Deceased Last Worked <b>October 1940</b>	Total Number of Years <b>?</b>	
If Married, give name of Wife or Husband of Deceased <b>--</b>		
Name of Father <b>Thomas E. Callow</b>	Birthplace <b>Ile of Man.</b>	
Maiden Name of Mother <b>Margaret Cottier</b>	Birthplace <b>Ile of Man.</b>	
Name of Informant <b>Edward Callow</b>		
Address <b>408 Victoria Street, New Westminster, B. C.</b>		
Relationship to Deceased <b>Brother.</b>		
Place of Burial, removal <b>New Fraser Cemetery</b>	Location of Grave <b>5-27-B.</b>	
Date of Burial, removal <b>Jan. 30, 1941.</b>	Time of Service <b>3:00 P.M.</b>	
Service held at <b>Parlours.</b>	Religion <b>?</b>	
Minister <b>Rev. P. C. McCrae.</b>		
Physician <b>Dr. G. S. Purvis.</b>	<b>Dr. E. H. McEwen (Coroner)</b>	
Cause of Death <b>X</b>		
Family Names: <b>1 Brother--Edward Callow, New Westminster.</b>		
<b>2 Sisters--Mrs. E. Richardson, Edson, Alta.</b>		
<b>Miss Julia Callow, New Westminster, B. C.</b>		

Remarks: **City Relief.**

Funeral Notices: <b>Columbian</b>	Province	Sun	News Herald
No. of Cars	Call at		
Pall Bearers:			
1 <b>X</b>		4	
2		5	
3		6	

Death Certificate for Charles Callow. Courtesy of the NWMA, item # 59.

Year.....1952	<b>S. BOWELL &amp; SONS</b>	Month.....January
No.....42		No.....42

Name of Deceased	EDWARD CALLOW			
Address	1121 Eighth Ave., City			
Place of Death	Royal Columbian Hospital		Date of Death	Sun. Jan. 27/52
Sex	Male	Nationality	Canadian	Racial Origin
Birthplace	Winnipeg, Man.		Manx	Marriage State
Date of Birth	Feb. 5, 1878	Age	73 yrs. 11 mos. 22 days	
How Long at (a) Place of Death	45 yrs.	(b) In Province	48 yrs. (c) In Canada	Life
Occupation	Laborer			
Kind of Industry or Business	Brick Laying			
Date Deceased Last Worked	?	Total Number of Years	?	
If Married, give name of Wife or Husband of Deceased				
Name of Father	Thomas Callow	Birthplace	Isle of Mann	
Maiden Name of Mother	Margaret Cottier	Birthplace	Isle of Mann	
Name of Informant	Mrs. J. R. Parsons			
Address	11454 - 78th Ave., Edmonton, Alta.			
Relationship to Deceased	Niece			
Place of Burial, removal	Fraser	Location of Grave	R.5, B.27, L.B	
Date of Burial, removal	Fri. Feb. 1/52	Time of Service	11:00 A.M.	
Service held at	Chapel	Religion	Protestant	
Minister	Rev. P.C. McCrae			
Physician	Dr. J.T. Lawson			
Cause of Death	Haemorrhage, ulcers of stomach & duodenum			
Family Names:	1 sister - Miss Julia Callow, City			
	Several nieces & nephews			

Remarks:

Funeral Notices: Columbian	Province	Sun	News Herald
No. of Cars	Call at		
1	Pallbearers		

Pall Bearers:			
1	R. Gregory	4	D. MacDonald
2	C.S. Cameron	5	T. Mahony
3	R. Burton	6	J. McMillan

Death Certificate for Edward Callow. Courtesy of the NWMA, item # 4239.

**PROVINCE OF BRITISH COLUMBIA**  
DEPARTMENT OF HEALTH AND WELFARE — DIVISION OF VITAL STATISTICS  
**REGISTRATION OF DEATH**

Reg. No. (Office use only)  
**NEW WESTMINSTER**  
**52-09-002080**

**1. PLACE OF DEATH**

Name of city or place New Westminster, B.C. Name of Municipality (if any) \_\_\_\_\_  
(If outside city or municipal limits add "Rural")

Street or road Royal Columbian Hospital House No. \_\_\_\_\_  
(If death occurred in a hospital or institution, give the name instead of street and number)

**2. LENGTH OF STAY** In Municipality where death occurred In Province In Canada (if immigrant)  
(in years, months and days) 45 Years 48 Years Life

**3. PRINT FULL NAME OF DECEASED** CALLOW, EDWARD  
(Surname or family name) (All given or Christian names in full)

**4. PERMANENT RESIDENCE OF DECEASED:**

Name of city or place New Westminster, B.C. Name of Municipality (if any) \_\_\_\_\_  
(If outside city or municipal limits add "Rural")

Street or road Eighth Avenue House No. 1121

**5. SEX** Male **6. CITIZENSHIP** Canadian **7. RACIAL ORIGIN** English **8. Single, Married, Widowed or Divorced** Single **9. BIRTHPLACE:** Winnipeg, Manitoba  
(See marginal note) (Write the word)

**10. Date of Birth** February 5th, 1878 **11. AGE** 73 11 22 hrs. or min.  
(Month by name) (Date) (Year)

**12. (a) Trade, profession or kind of work as logger, fisherman, office clerk, etc.** Labourer  
(b) Kind of industry or business, as logging, fishing, bank, etc. Brick Laying  
(If labourer specify kind of work above) (If "Housewife" in own home answer "At Home")

**13. Date deceased last worked at this occupation** Unknown **14. Total years spent in this occupation** Unknown

**15. If married, widowed or divorced give name of husband or maiden name of wife of deceased** \_\_\_\_\_

**16. Name of father** Callow Thomas  
(Surname or family name) (All given or Christian names)

**17. Maiden name of mother** Cottier Margaret  
(Surname or family name) (All given or Christian names)

**18. Birthplace—** Isle Of Mann Isle Of Mann  
Father (City or Place and Province or Country) Mother (City or Place and Province or Country)

**19. I certify the foregoing to be true and correct to the best of my knowledge and belief.**

Given under my hand at New Westminster this 30th. day of January 19 52

Signature of informant Mrs. J. S. Parsons Relationship to deceased Niece  
(Married woman not to use Husband's initials or given names)

Address of informant 11454 78th Avenue, Edmonton, Alberta  
(House No.) (Name of street) (Name of City, Municipality or Place) (Province or State)

**20. Burial, Cremation or Removal** Burial February 1st. 19 52  
(State which) (Date) (Month by name) (Date) (Year)

Place of Burial New Westminster, B.C. Name of Cemetery Fraser Cemetery  
(Municipality, etc., where Cemetery located)

**21. Undertaker:—** S. Bowell & Sons New Westminster, B.C.  
Name (Name of City, Municipality or Place) (Province or State)

**MEDICAL CERTIFICATE OF DEATH**

**22. DATE OF DEATH** January 27th. 19 52  
(Month by name) (Date) (Year)

**23. I HEREBY CERTIFY that I attended deceased from** April 22nd 19 46  
to January 27th 19 52 and last saw him alive on January 26th 19 52

**CAUSE OF DEATH**

**I** 5400  
Disease or condition directly leading to death  
(This does not mean the mode of dying, e.g., heart failure, asphyxia, etc. It means the disease, injury, or complication which caused death.)  
(a) Hemorrhage  
due to (or as a consequence of)

Antecedent causes  
Morbidity conditions, if any, giving rise to the above cause, stating the underlying condition last.  
(b) Ulcers of stomach & duodenum  
due to (or as a consequence of)

**II** 307x  
Other significant conditions contributing to the death, but not related to the disease or condition causing it.  
(c) Acute mania due to combined arteriosclerosis (cerebral) and acute alcoholic poisoning.

**24. If a woman, was the death** (a) Associated with pregnancy? (b) Duration weeks. (c) Was there a delivery? \_\_\_\_\_

**25. (a) Was there a recent surgical operation?** No (b) Date of operation \_\_\_\_\_ 19 \_\_\_\_\_  
(c) State findings of operation (d) Was there an autopsy? Yes

**26. If death was due to external causes (violence) fill in also the following:—**

(a) Accident, suicide or homicide? (b) Date of injury \_\_\_\_\_ 19 \_\_\_\_\_  
(c) Manner of injury \_\_\_\_\_ (State which) (How sustained)

(d) Nature of injury \_\_\_\_\_  
(e) Specify whether injury occurred in industry, in home or in public place \_\_\_\_\_

**27. Signed by** J. S. Parsons Designation M.D. M.D., Coroner, etc.  
Address New Westminster, B.C. Date January 31st 19 52

**28. Print name of M.D., Coroner, etc., whose signature appears above** \_\_\_\_\_

**29. Notations** \_\_\_\_\_

**30. I hereby certify that the above return was made to me at** New Westminster  
Dated February 5 19 52  
District Registration No. \_\_\_\_\_ (Signature of District Registrar)

(SEE REVERSE SIDE FOR DEPUTY)

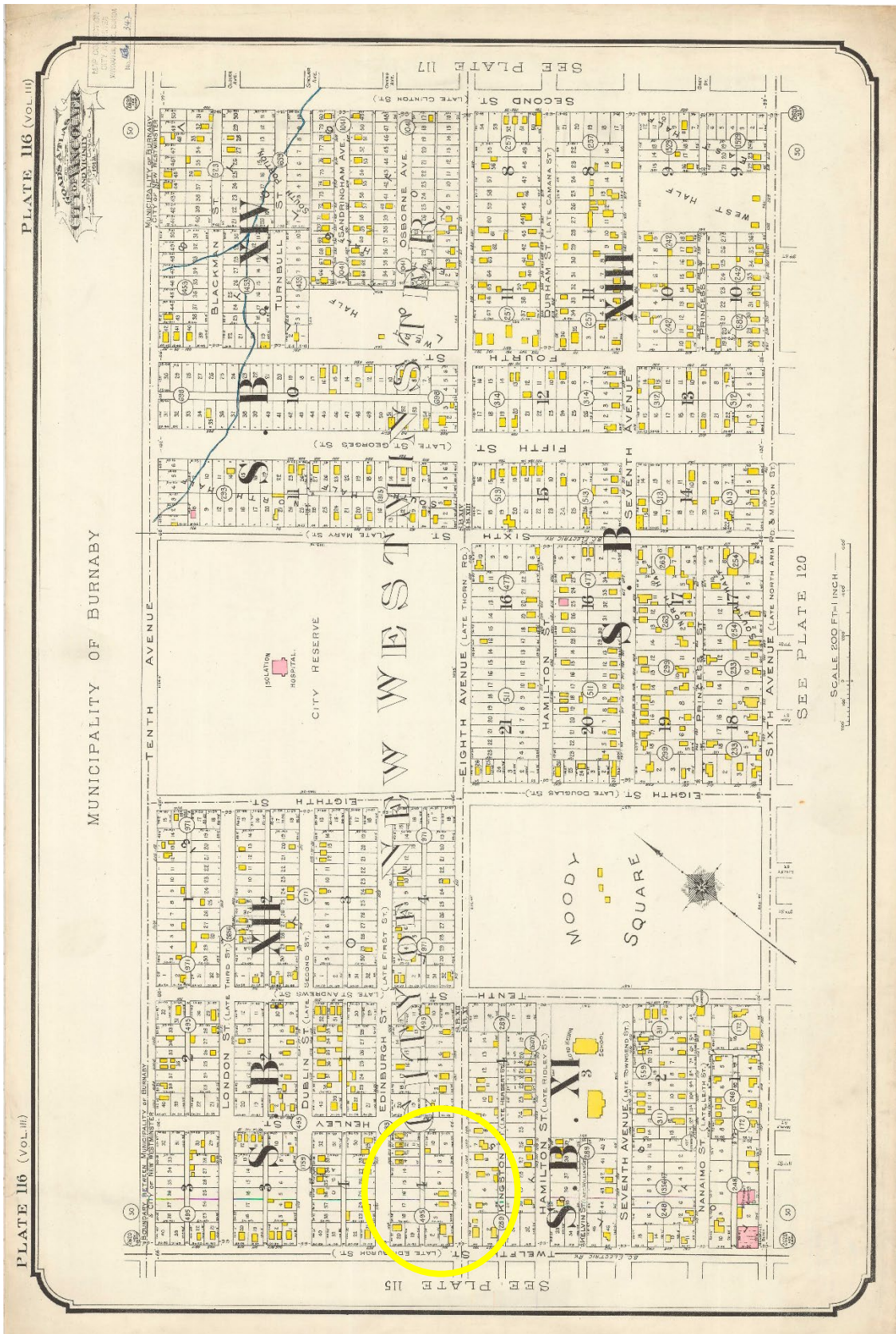
MARGIN RESERVED FOR BINDING. WRITE PLAINLY, WITH UNFADING INK. THIS IS A PERMANENT RECORD.  
CITIZENSHIP (NATIONALITY) is defined in terms of the country to which the person owes allegiance. The term "Canadian" should be used as descriptive of a person who was born in Canada or who has rights of Citizenship in Canada, unless he or she has subsequently become the citizen of another country.  
RACIAL ORIGIN is defined in terms of the people or race to which the person—traced through the father—belongs, whether English, Irish, Scottish, French, German, Russian, Ukrainian, etc. The terms "Canadian" or "American" should not be used for RACIAL ORIGIN, as they express CITIZENSHIP (NATIONALITY).

DO NOT WRITE BELOW  
DOUBLE LINE  
OFFICE USE ONLY

In case of stillbirth consult reverse side before making out certificate.

Death  
Certificate  
for Edward  
Callow.  
Courtesy of  
the BC  
Archives.





Goad's Atlas of the City of New Westminster, 1913, Plate 116

## Gabled Vernacular

### *Form*

The most common surviving houses of old Vancouver, Gabled Vernaculars are 1-1/2 to 2-1/2 stories tall with front-gabled roofs; the roof may have a skirt across the bottom of the gable. In this style, the house is usually set a half to a full storey above the ground (due to the basement space required for central heating). Its full-width front porch commonly has a hipped roof held up by posts (typically round Tuscan-style). The front door is almost always set on one side of the facade in line with the front stairs and there may be a bay window on one side of the porch, sometimes repeated on the upper storey. Dormers may be hipped or gabled. Examples of the style usually have very few decorative elements such as brackets and fretwork.

### *Background*

The Gabled Vernacular style drew on several popular styles, adapted them for simpler homes for everyday living in the late 19<sup>th</sup> – early 20<sup>th</sup> century. Following the rise of the Greek revival movement in the 19<sup>th</sup> century, gable-fronted houses became more common, with designs that echoed the pediments of ancient Greek temples. This style gained popularity for American homes between 1830 and 1850. Pre-fabricated houses like many of the BC Mills houses and mail-order plans made the style easy to access. Gabled Vernacular homes were common in Vancouver since their narrow two-storey form made front-gabled houses well suited for urban lots. Today, the style is one of the most common historical house styles left in the city.

### *Details*

- Steeply pitched, front-gabled roof
- Often roof skirt across bottom of gable
- Usually 2 to 2-1/2 storey
- Full-width porch
- Set a half- to full-storey above ground
- Few decorative elements
- Drop siding or narrow lap siding, sometimes shingles

### *Materials*

Gabled Vernacular roofs were usually made of cedar shingles. Siding was usually drop siding with a pronounced channel or concave cove shape at the top of the board.

## Appendix C: Bibliography and Sources

City of New Westminster Museum and Archives Website

<http://archives.newwestcity.ca/search.aspx>

City of New Westminster Website

[newwestcity.ca](http://newwestcity.ca)

Goad's Atlas of the City of New Westminster, City of Vancouver Archives

<https://searcharchives.vancouver.ca/goads-atlas-of-city-of-new-westminster-b-c>

Google Maps

[google.com/maps](https://google.com/maps)

Gottfried, Herbert and Jan Jennings. American Vernacular Architecture: Buildings and Interiors 1870-1960. W.W. Norton & Company Inc. New York/London, 2009.

Historic Places Program Branch, "Canadian Register of Historic Places: Writing Statements of Significance," Parks Canada, November 2006

McAlester, Virginia Savage. A Field Guide to American Houses. New York: Alfred Knopf, 2018.

Royal BC Museum for Marriage and Death Certificates

<http://search-collections.royalbcmuseum.bc.ca/Genealogy>

"Standards and Guidelines for the Conservation of Historic Places in Canada", Second Edition, 2010

[www.historicplaces.ca](http://www.historicplaces.ca)

Vancouver Heritage Foundation

<https://www.vancouverheritagefoundation.org/house-styles>