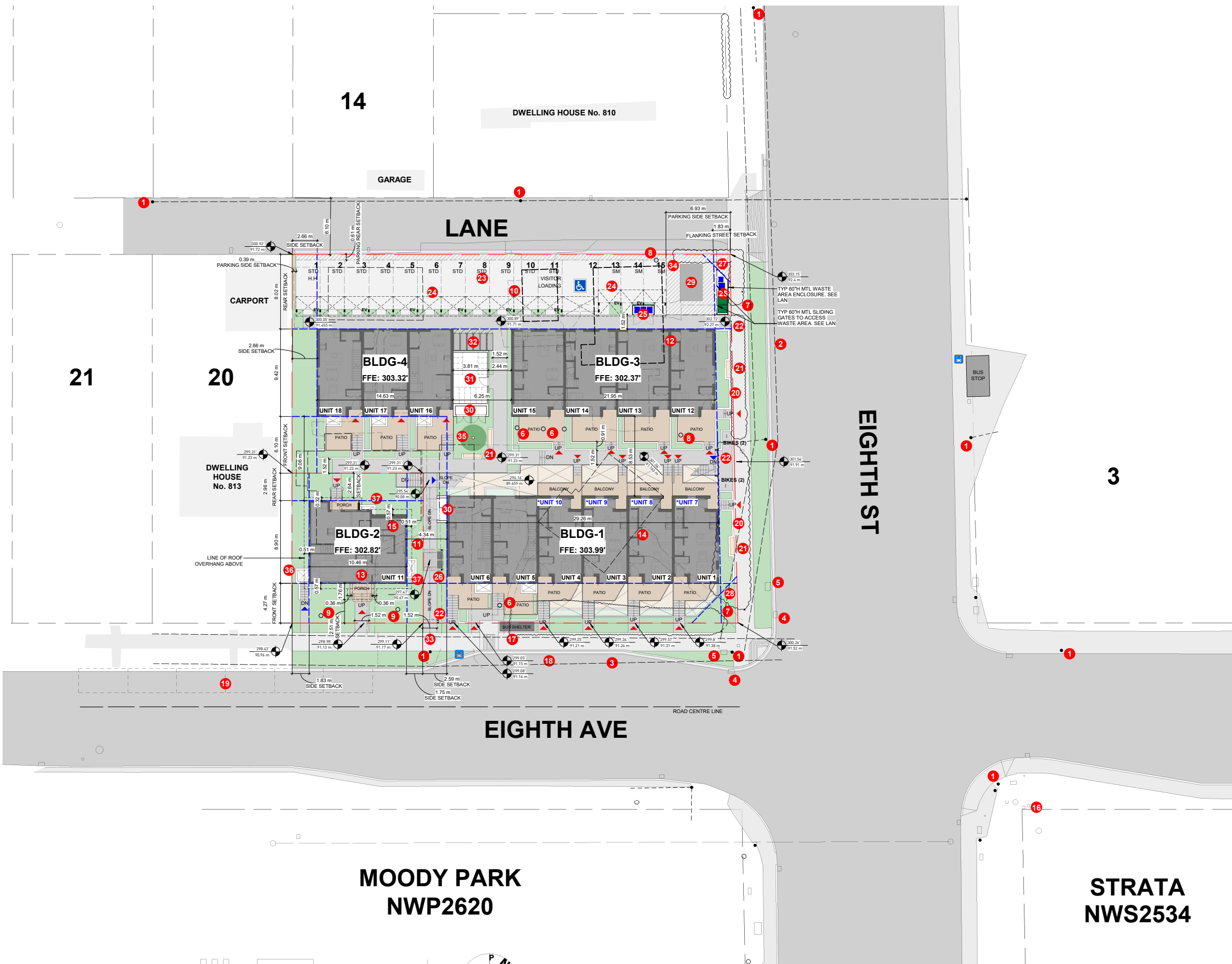


Attachment 3

Drawing Package (Select)



LEGEND

- ▼ UNIT ENTRY AT MAIN FLOOR
- ▼ UNIT ENTRY AT BASEMENT
- ① UTILITY POLE
- ② O/H POWER LINES ABOVE (@325.3')
- ③ O/H POWER LINES ABOVE (@342.7')
- ④ CATCH BASIN
- ⑤ SERVICE BOX
- ⑥ EXIST TREES TO BE REMOVED. SEE LAN DWGS
- ⑦ EXIST HEDGE TO BE REPLACED. SEE LAN DWGS
- ⑧ EXIST SHRUB TO BE RELOCATED. SEE LAN DWGS
- ⑨ PROPOSED RELOCATION OF SHRUB. SEE LAN DWGS
- ⑩ EXIST GRAPE VINE TO BE RELOCATED. SEE LAN DWGS
- ⑪ PROPOSED PERGOLA/TRELLIS FOR GRAPE VINE RELOCATION. SEE LAN DWGS
- ⑫ EXIST DWELLING HOUSE No. 806 TO BE RELOCATED
- ⑬ PROPOSED NEW LOCATION OF DWELLING HOUSE No. 806
- ⑭ EXIST DWELLING HOUSE No. 802 TO BE REMOVED
- ⑮ EXIST DWELLING HOUSE No. 809 TO BE REMOVED
- ⑯ FIRE HYDRANT
- ⑰ PROPOSED BUS SHELTER. SEE TO SHEET 17.1 & CIVIL DWGS
- ⑱ PROPOSED BUS PULL-OUT. SEE TO SHEET 17.1 & CIVIL DWGS
- ⑲ EXIST STREET PARKING
- ⑳ PROPOSED CIP CONC WALL. SEE LAN DWGS
- ㉑ PROPOSED BENCH. SEE LAN DWGS
- ㉒ PROPOSED ENTRY PERGOLA. SEE LAN DWGS
- ㉓ PROPOSED PAVING. SEE LAN DWGS
- ㉔ **PROPOSED GREEN TRELLIS/PERGOLA ABOVE. SEE LAN DWGS
- ㉕ PROPOSED WASTE AREA. SEE SHEET 17.1 & LAN DWGS
- ㉖ CANADA POST COMMUNITY MAILBOX
- ㉗ 3m x 3m CORNER TRUNCATION
- ㉘ 5m x 5m CORNER TRUNCATION
- ㉙ 8'Wx13'Dx4'H PMT
- ㉚ ELECTRICAL / TELECOM CLOSETS
- ㉛ SECURED BICYCLE STORAGE
- ㉜ BICYCLE LOCKERS. MIN INT DIMENSIONS: 0.6m WIDE, x 1.8m LONG x 1.2m HIGH
- ㉝ TOP OF RAMP TO ACCESSIBLE UNITS
- ㉞ ACCESS PATH FROM LANE
- ㉟ AMENITY AREA
- ㊱ 1.49m² (4'x4') LOCALIZED DEPRESSION PER 320.12
- ㊲ 1.49m² (2'-10"x5'-8") LOCALIZED DEPRESSION PER 320.12

NOTES:
 1. *UNITS 7 TO 10 LOCATED IN BASEMENT BELOW. REFER TO SHEETS 18 & 18.1
 2. ** 2.3m OVERHEAD CLEARANCE ABOVE ALL STALLS. SEE SECTIONS

SITE PLAN

8TH + 8TH TOWNHOMES

NOVEMBER 17, 2021
 802 & 806 8TH ST, 809 8TH AVE, NWM

REVISIONS No.	DATE
1	2021.03.02
2	2021.08.17
3	2021.11.12

GRIMWOOD
ARCHITECTURE

HRA / DP RE-SUBMISSION

MATERIALS LEGEND

SYMBOL	QTY	DESCRIPTION
		PAVING TYPE 1 Concrete Unit Pavers Various Sizes, Two Colours
		PAVING TYPE 2 Aristokrat Porcelain Pavers 48" x 24" Running Bond
		PAVING TYPE 3 AquaPave Standard by Abbotsford Herringbone Pattern
		STEPS Cast-in-Place Concrete Steps
		CITY OF NEW WESTMINSTER SIDEWALK Cast-in-Place Concrete Refer to Civil
		PLANTING TYPE 1 Planting Bed
		PLANTING TYPE 2 CIP Concrete Planter Ht. Varies, Refer to Details
		PARKING TRELLIS Overhead Cable Trellis
		HERITAGE TRELLIS Thermally Modified Wood Trellis
		ENTRY TRELLIS Powdercoated Metal Pergola. Refer to Arch.
		RAIL TYPE 1 Glass Guard Rail 4'-0" HT.
		RAIL TYPE 2 Stainless Steel Hand Rail
		WALL TYPE 1 Cast-in-Place Retaining Wall Height Varies, Refer to Details
		WALL TYPE 2 Cedar Fence 6'-0" Ht.
		PAD-MOUNTED TRANSFORMER Refer to Architecture
		SITE FURNISHING By Unit Owners, For Graphic Information Only
		SITE FURNISHING Class B Bike Racks Product TBD
		SITE FURNISHING Wood Bench Product TBD
		HOSE BIB One per unit patio.

EXISTING UTILITIES LEGEND

SYMBOL	DESCRIPTION
	OVERHEAD UTILITY (HYDRO)
	UTILITY POLE
	TRAFFIC SIGN
	TRAFFIC POLE
	UTILITY ACCESS
	WATER VALVE





① SOUTH EAST CORNER



② SOUTH WEST CORNER

HRA / DP RE-SUBMISSION

RENDERINGS
8TH + 8TH TOWNHOMES

NOVEMBER 12, 2021

802 & 806 8TH ST, 809 8TH AVE, NWM

REVISIONS	DATE
No. 1	2021.03.02
2	2021.08.17
3	2021.11.12

GRIMWOOD
 ARCHITECTURE



① SOUTH (8TH AVENUE)



② EAST (8TH STREET)

HRA / DP RE-SUBMISSION

RENDERINGS
8TH + 8TH TOWNHOMES

NOVEMBER 12, 2021

802 & 806 8TH ST, 809 8TH AVE, NWM

REVISIONS	DATE
No. 1	2021.03.02
2	2021.08.17
3	2021.11.12

GRIMWOOD
 ARCHITECTURE



① NORTH EAST CORNER



② NORTH WEST CORNER

HRA / DP RE-SUBMISSION

RENDERINGS
8TH + 8TH TOWNHOMES

NOVEMBER 12, 2021

802 & 806 8TH ST, 809 8TH AVE, NWM

REVISIONS	DATE
No. 1	2021.03.02
2	2021.08.17
3	2021.11.12

GRIMWOOD
 ARCHITECTURE



① SOUTH ELEVATION (8TH AVENUE)
1/8" = 1'-0"



② EAST ELEVATION (8TH STREET)
1/8" = 1'-0"



③ NORTH ELEVATION (LANE)
1/8" = 1'-0"

HRA / DP RE-SUBMISSION

ELEVATIONS

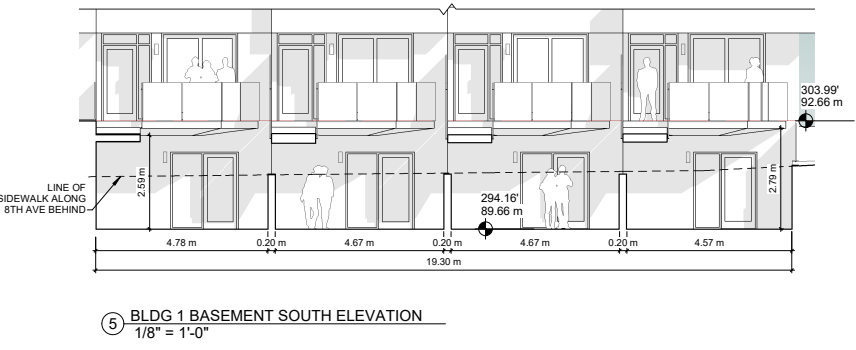
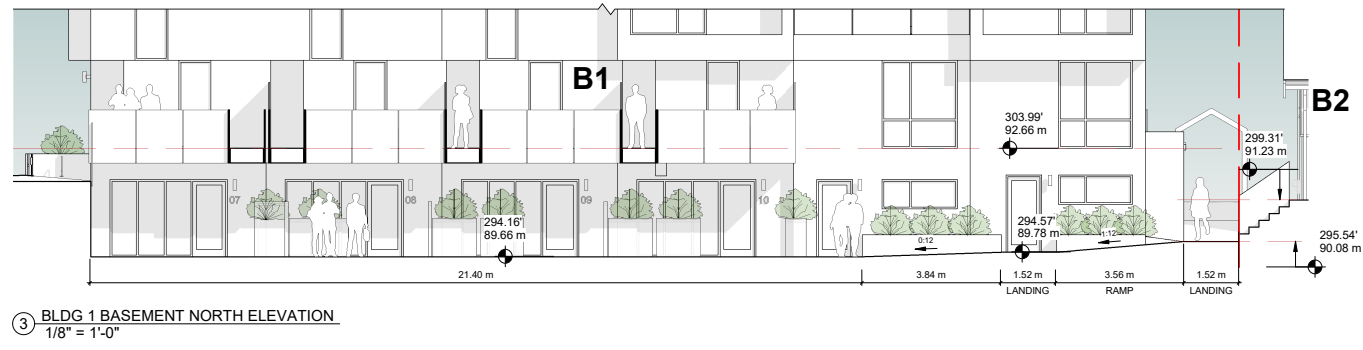
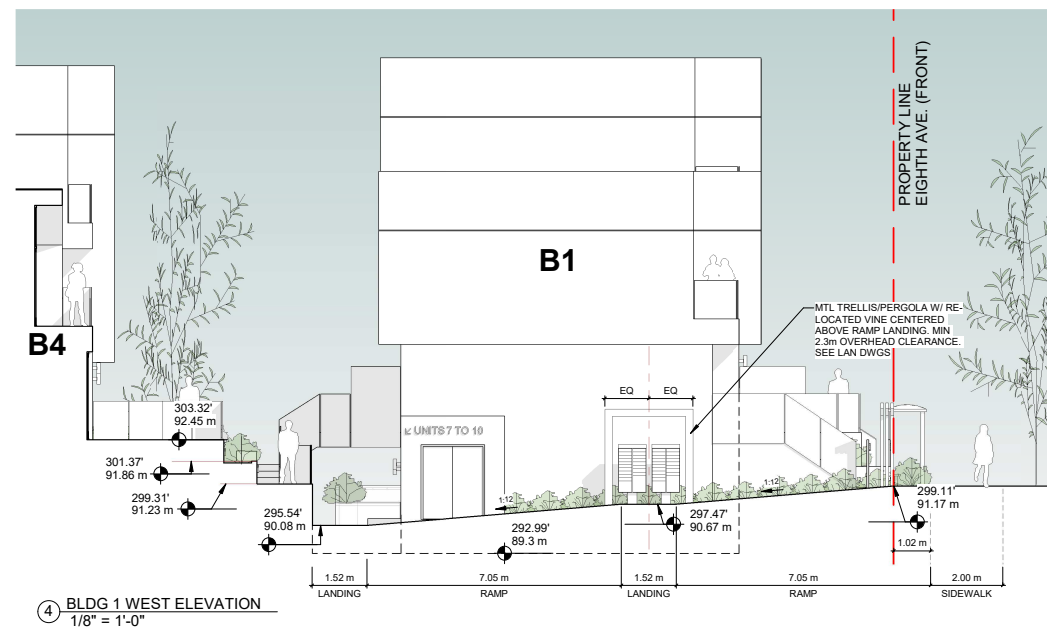
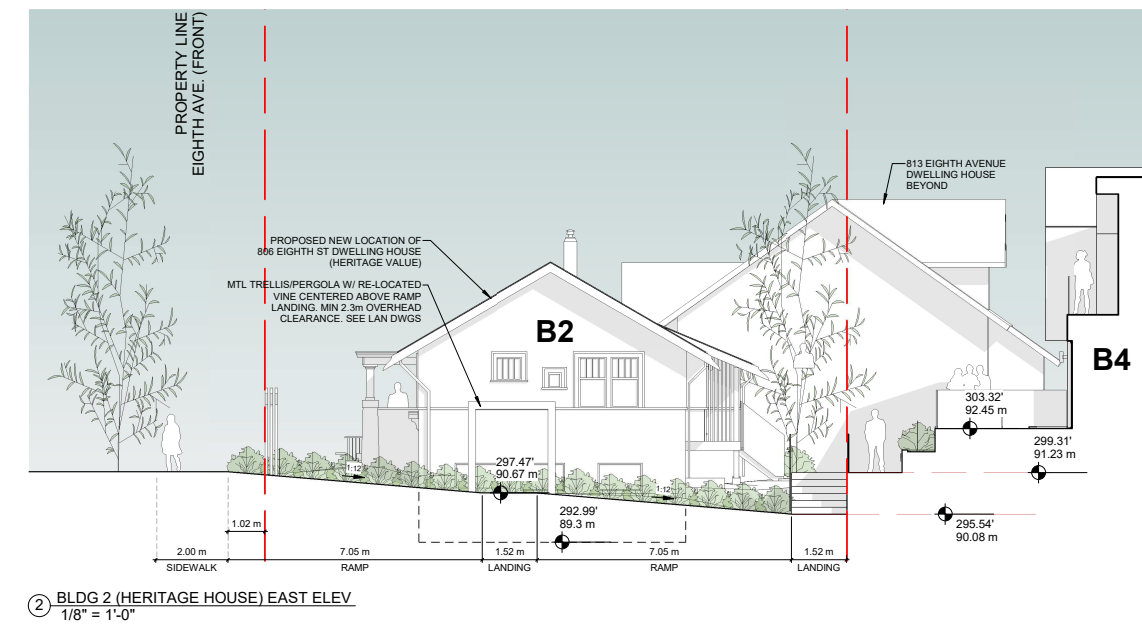
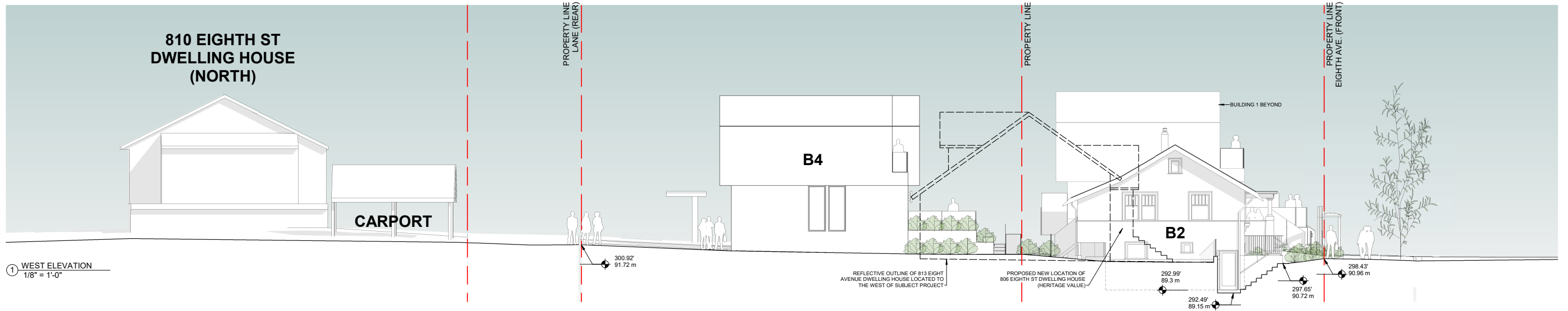
8TH + 8TH TOWNHOMES

NOVEMBER 17, 2021

802 & 806 8TH ST, 809 8TH AVE, NWM

REVISIONS	No.	DATE
1	2021.03.02	
2	2021.08.17	
3	2021.11.12	

GRIMWOOD
ARCHITECTURE

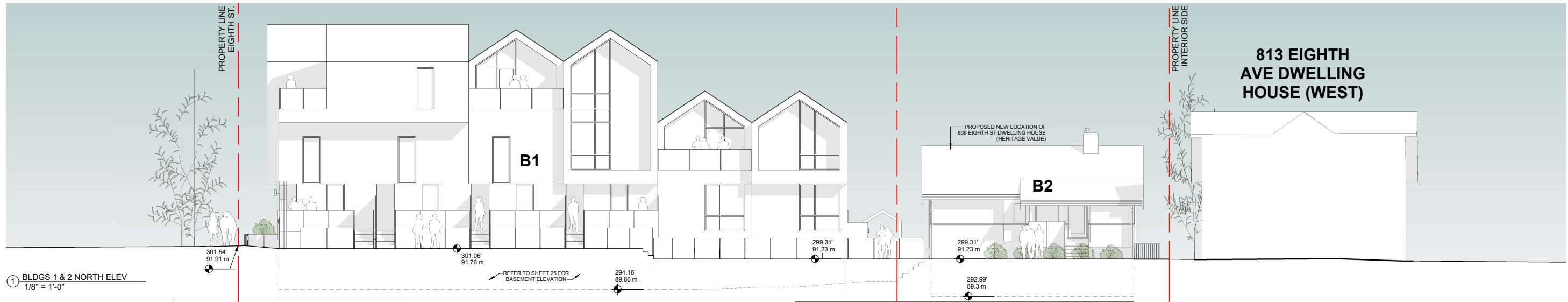


HRA / DP RE-SUBMISSION

ELEVATIONS
8TH + 8TH TOWNHOMES

NOVEMBER 12, 2021
802 & 806 8TH ST, 809 8TH AVE, NWM

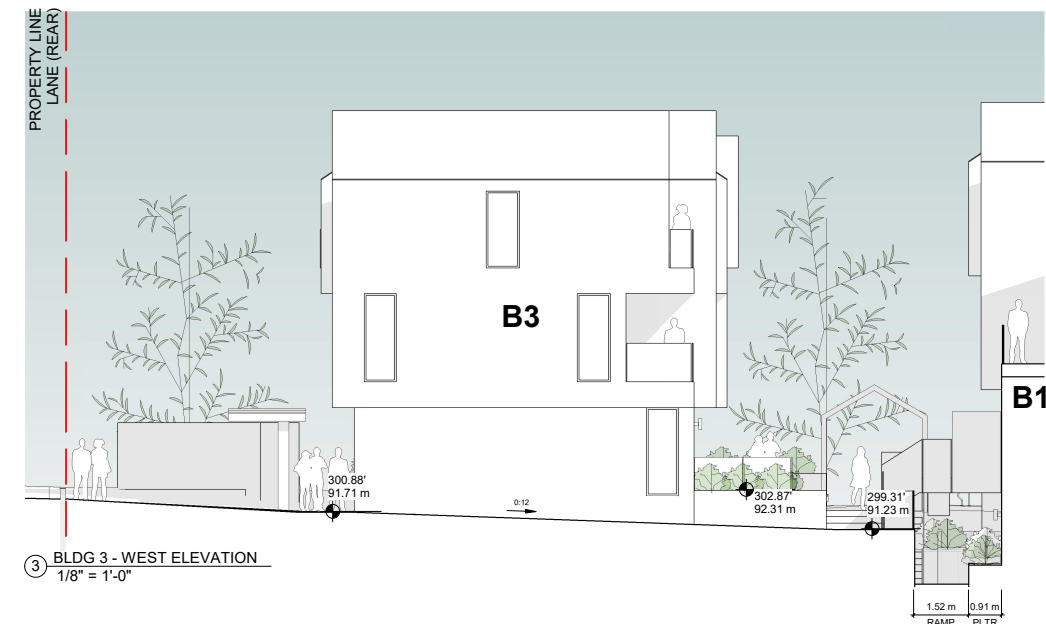
REVISIONS No.	DATE	GRIMWOOD ARCHITECTURE
1	2021.03.02	
2	2021.08.17	
3	2021.11.12	



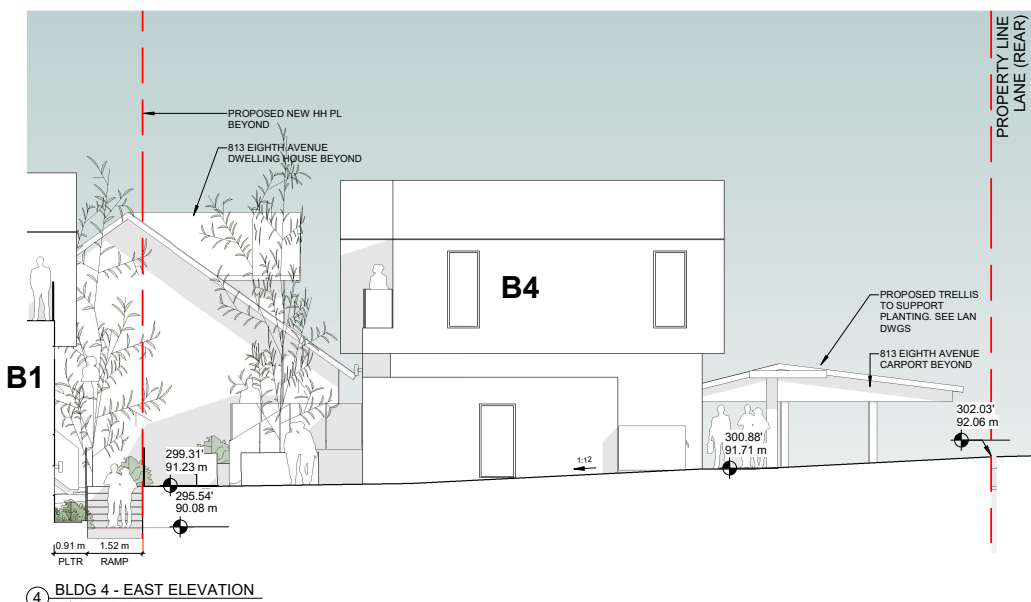
① BLDGS 1 & 2 NORTH ELEV
1/8" = 1'-0"



② BLDGS 3 & 4 SOUTH ELEV
1/8" = 1'-0"



③ BLDG 3 - WEST ELEVATION
1/8" = 1'-0"



④ BLDG 4 - EAST ELEVATION
1/8" = 1'-0"

813 EIGHTH
AVE DWELLING
HOUSE (WEST)

813 EIGHTH
AVE DWELLING
HOUSE (WEST)

ELEVATIONS
8TH + 8TH TOWNHOMES

NOVEMBER 12, 2021
802 & 806 8TH ST, 809 8TH AVE, NWM

REVISIONS	No.	DATE
	1	2021.03.02
	2	2021.08.17
	3	2021.11.12

GRIMWOOD
ARCHITECTURE