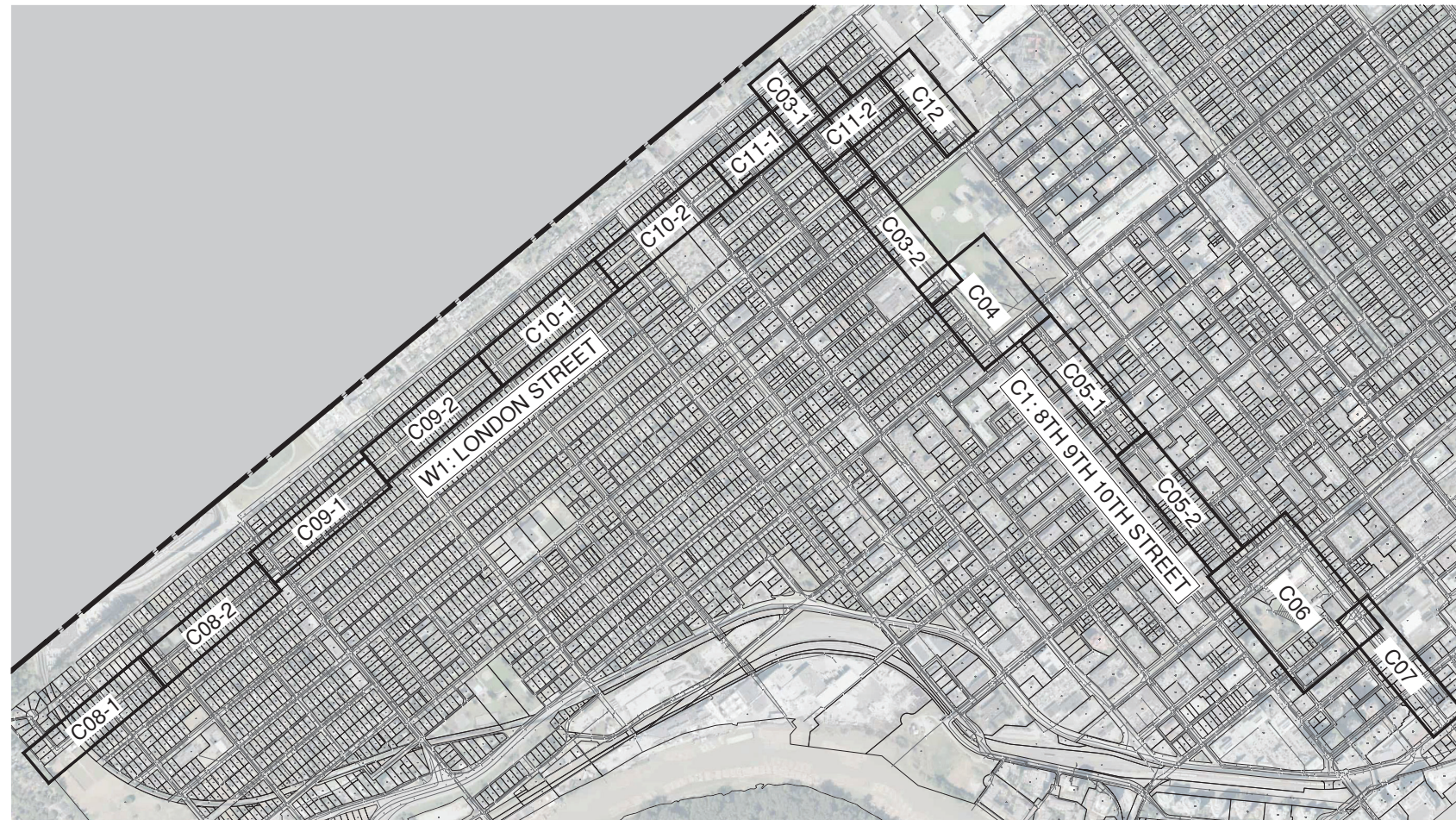




Attachment #5
Data Collection Summary



CITY OF NEW WESTMINSTER
ATNP YEAR 2 IMPROVEMENTS
 Project No. 1274.0076.01



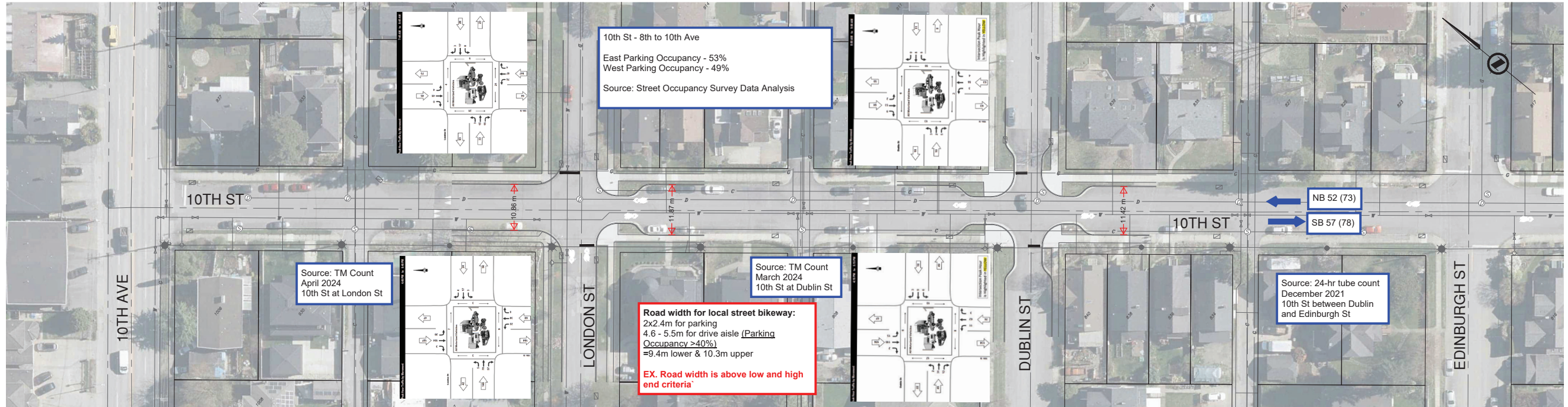
SITE LOCATION
 SCALE 1:7500

Sheet List Table

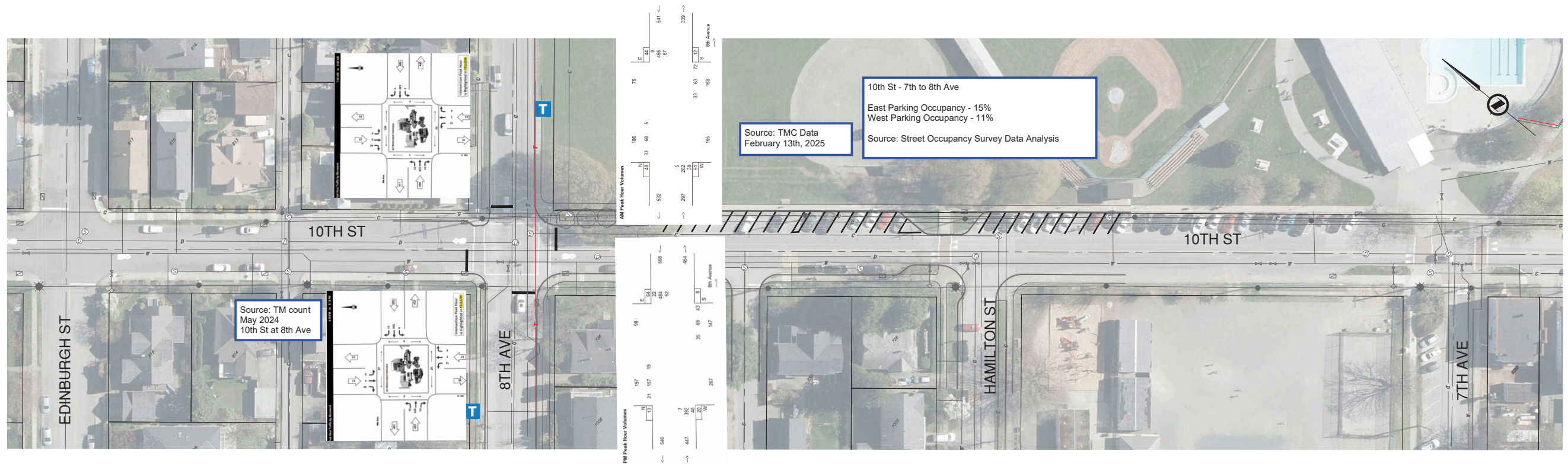
C00	COVER
C03	8TH 9TH 10TH STREET
C04	8TH 9TH 10TH STREET
C05	8TH 9TH 10TH STREET
C06	8TH 9TH 10TH STREET
C07	8TH 9TH 10TH STREET
C08	LONDON STREET
C09	LONDON STREET
C10	LONDON STREET
C11	LONDON STREET
C12	LONDON STREET

ISSUED
 FOR
 DISCUSSION





TENTH STREET – TENTH AVE / EDINBURGH ST
1: 500



TENTH STREET – EDINBURGH ST / 7TH AVE
1: 500

REV NO	REVISIONS	DATE	DRAWN	APPRD
1	FOR PRELIMINARY DESIGN DISCUSSION	2025-01-20	ZR	BF

ROAD WORKS

ATNP YEAR 2 IMPROVEMENTS
CITY OF NEW WESTMINSTER

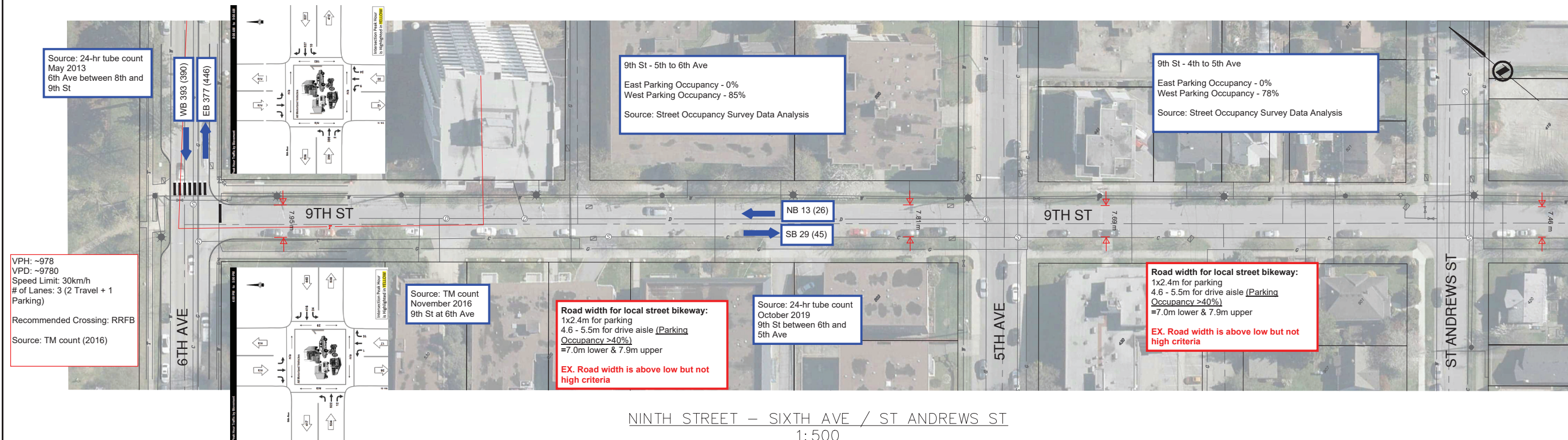


► DESIGN

SCALE		DESIGN NO.	
1:500H	1:50V	DATE	2025-01-20
DRAWN BY	Z. RICHARD	DESIGN BY	E. SWEETLAND
CHECKED BY	B. FAN	APPROVED BY	B. FAN
DWG. NO.		REV. REV	
----		----	
OF 12			



MOODY PARK – TENTH ST / SIXTH AVE
1: 500



NINTH STREET – SIXTH AVE / ST ANDREWS ST
1: 500

REV NO	REVISIONS	DATE	DRAWN	APPRD
1	FOR PRELIMINARY DESIGN DISCUSSION	2025-01-20	ZR	BF

ROAD WORKS

ATNP YEAR 2 IMPROVEMENTS
CITY OF NEW WESTMINSTER



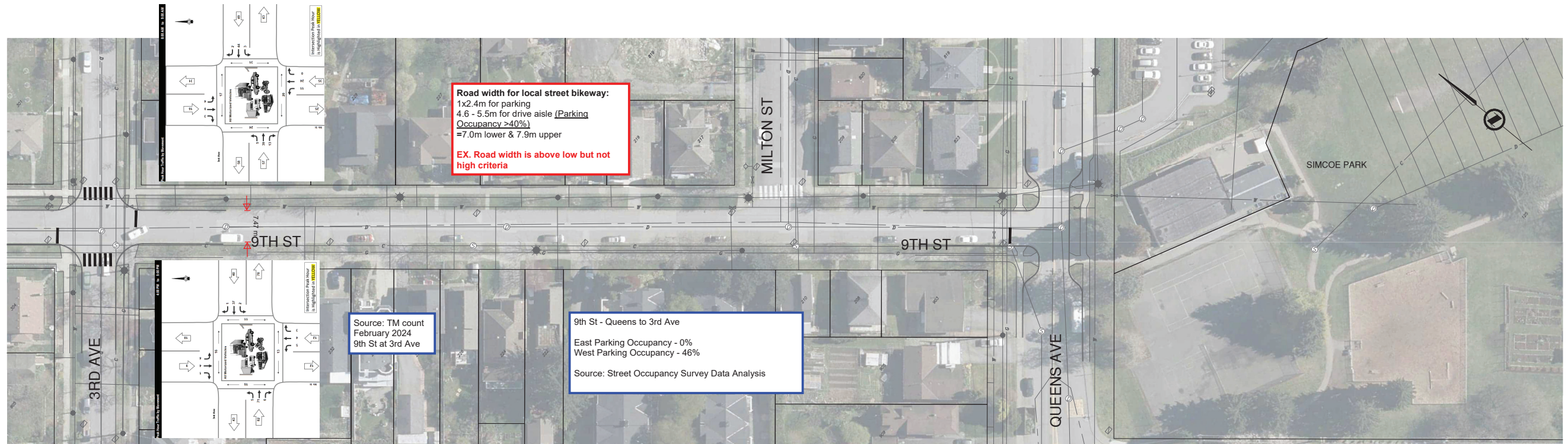
► DESIGN

DESIGN NO.

SCALE	DATE	DWG. NO.
1:500H 1:50V	2025-01-20	----
DRAWN BY	DESIGN BY	----
Z. RICHARD	E. SWEETLAND	----
CHECKED BY	APPROVED BY	----
B. FAN	B. FAN	----
REV.	REV.	----



NINTH STREET – ST ANDREWS ST / THIRD AVE
 1: 500



NINTH STREET – THIRD AVE / QUEENS AVE
 1: 500

REV NO	REVISIONS	DATE	DRAWN	APPRD
1	FOR PRELIMINARY DESIGN DISCUSSION	2025-01-20	ZR	BF

ROAD WORKS

ATNP YEAR 2 IMPROVEMENTS
 CITY OF NEW WESTMINSTER



► DESIGN

SCALE		DESIGN NO.		DWG. NO.
1:500H	1:50V	DATE	2025-01-20	----
DRAWN BY	Z. RICHARD	DESIGN BY	E. SWEETLAND	---- OF 12
CHECKED BY	B. FAN	APPROVED BY	B. FAN	REV. REV



8th St - Royal to Queens Ave
 East Parking Occupancy - 66%
 West Parking Occupancy - 38%
 Source: Street Occupancy Survey Data Analysis

SIMCOE PARK – QUEENS AVE / EIGHTH ST
 1: 500

REV NO	REVISIONS	DATE	DRAWN	APPRD
1	FOR PRELIMINARY DESIGN DISCUSSION	2025-01-20	ZR	BF

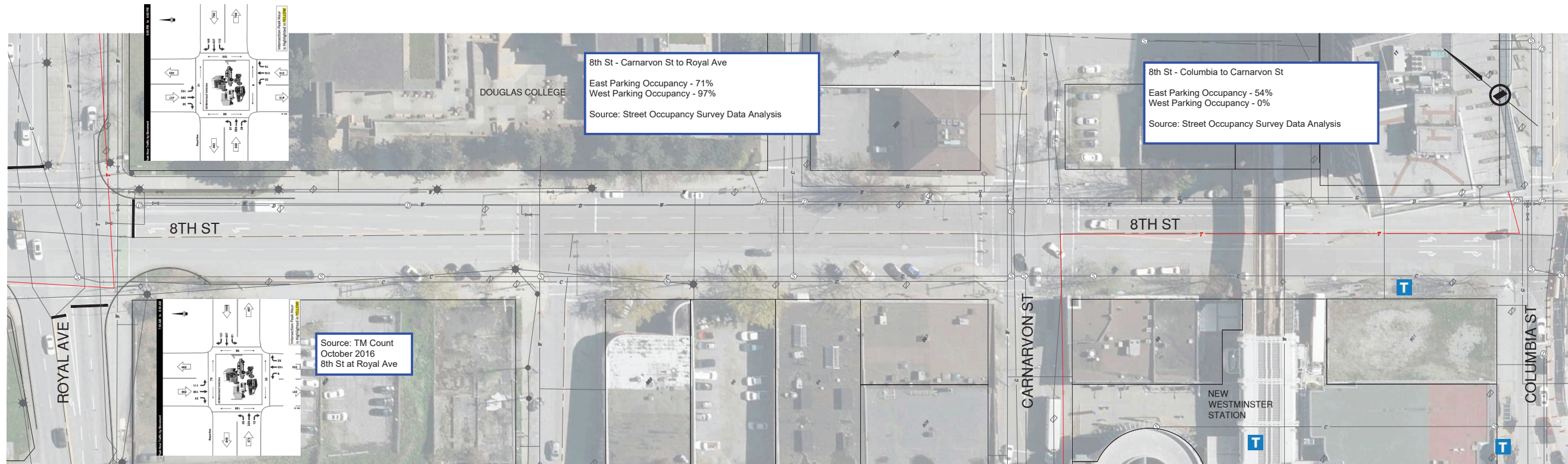
**ROAD
WORKS**

ATNP YEAR 2 IMPROVEMENTS
 CITY OF NEW WESTMINSTER

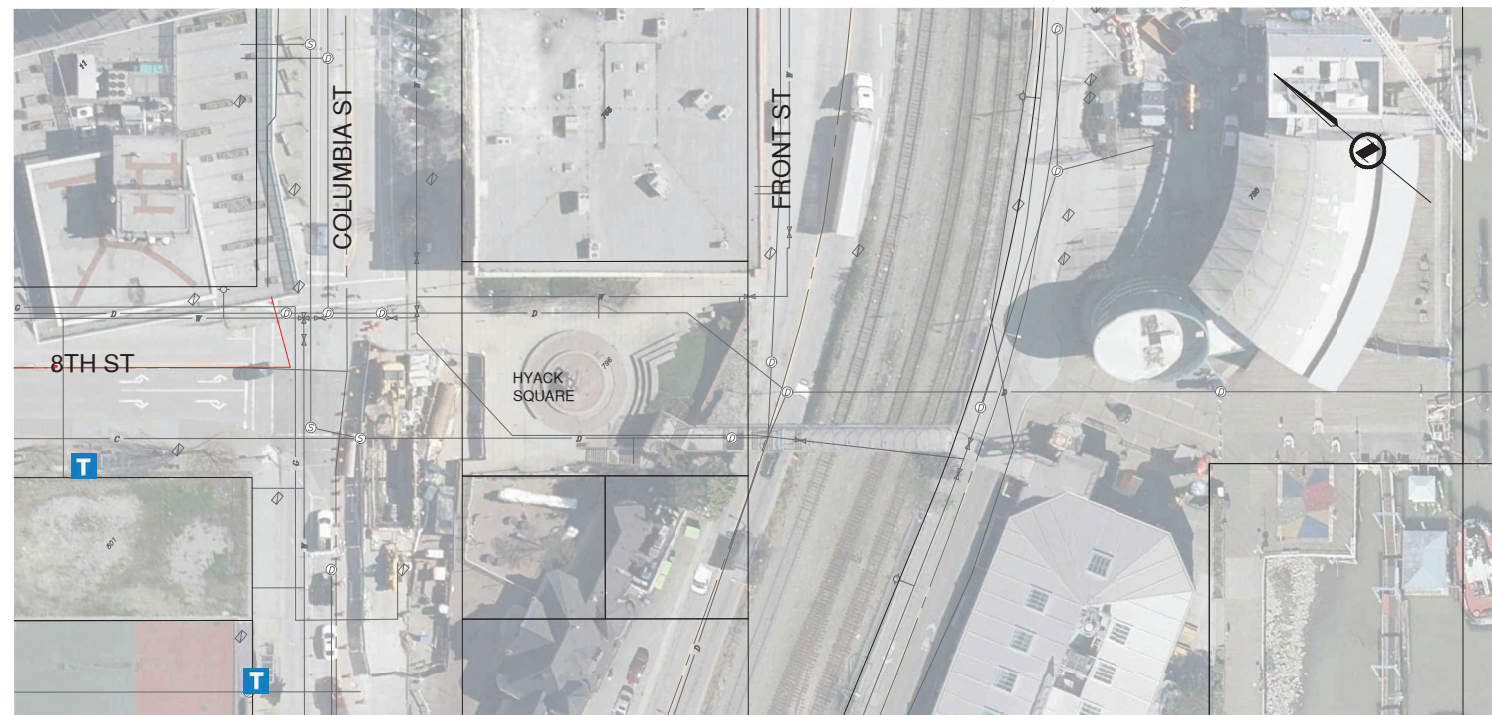


► **DESIGN**

SCALE	DATE	DESIGN NO.	DWG. NO.
1:500H 1:50V	2025-01-20	----	----
DRAWN BY	DESIGN BY	REV. REV.	REV. REV.
Z. RICHARD	E. SWEETLAND	----	----
CHECKED BY	APPROVED BY		
B. FAN	B. FAN		



EIGHTH STREET – ROYAL AVE / COLUMBIA ST
1: 500



EIGHTH STREET – ROYAL AVE / COLUMBIA ST
1: 500

REV NO	REVISIONS	DATE	DRAWN	APPRD
1	FOR PRELIMINARY DESIGN DISCUSSION	2025-01-20	ZR	BF

ROAD WORKS

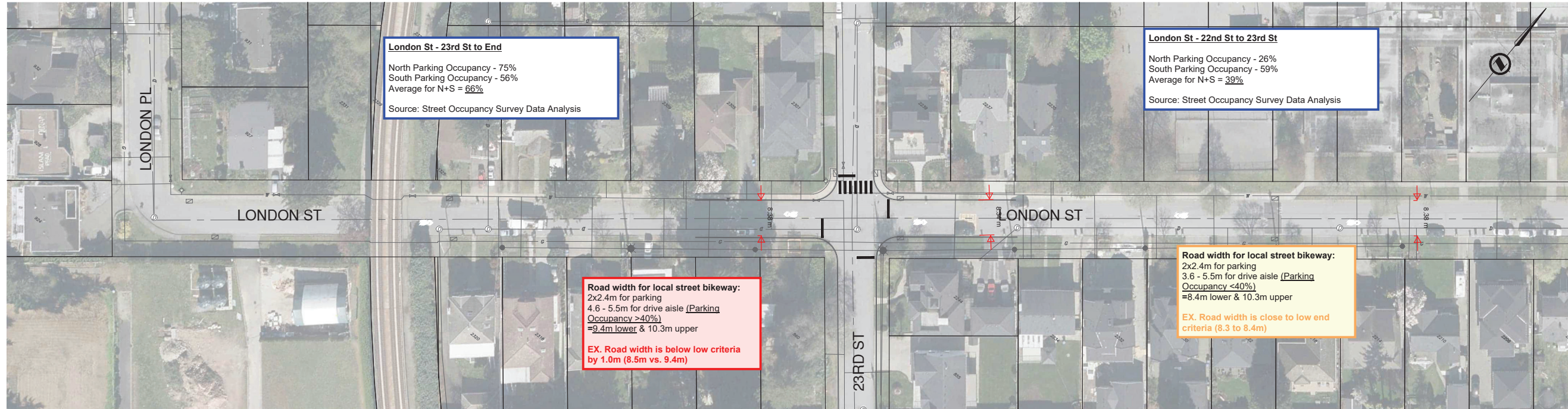
ATNP YEAR 2 IMPROVEMENTS
CITY OF NEW WESTMINSTER



► **DESIGN**

SCALE	DATE	DESIGN NO.	DWG. NO.
1:500H 1:50V	2025-01-20	----	----
DRAWN BY	DESIGN BY		
Z. RICHARD	E. SWEETLAND		
CHECKED BY	APPROVED BY		
B. FAN	B. FAN		

PLOT DATE: February 5, 2025 - I:\urban-systems\comprgical-projects\WNI\274607610-Design\Projects\WNI\274607610-Design\CAD\20_PROD\1274607610 - DES.dwg



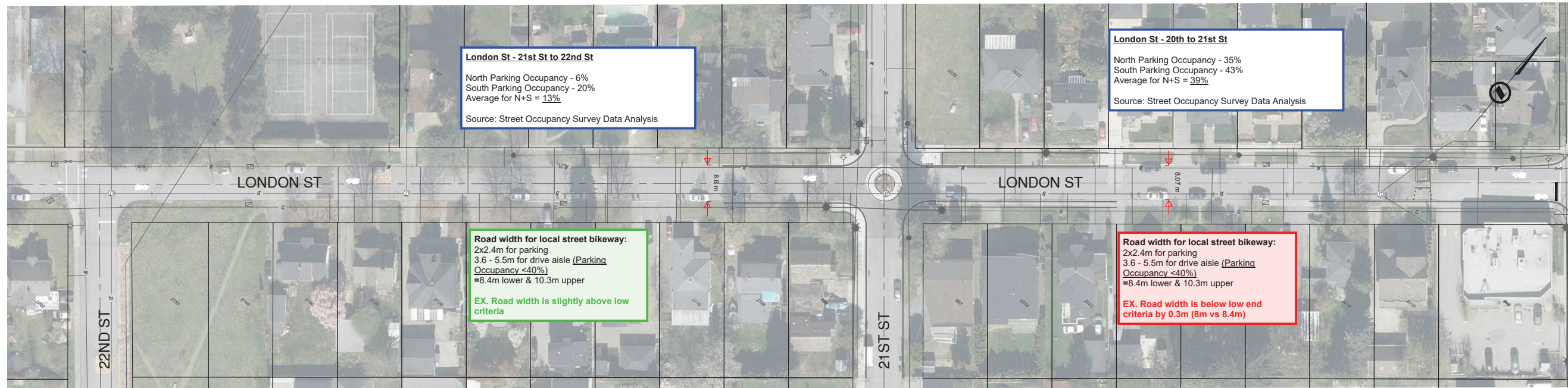
London St - 23rd St to End
 North Parking Occupancy - 75%
 South Parking Occupancy - 56%
 Average for N+S = **66%**
 Source: Street Occupancy Survey Data Analysis

London St - 22nd St to 23rd St
 North Parking Occupancy - 26%
 South Parking Occupancy - 59%
 Average for N+S = **39%**
 Source: Street Occupancy Survey Data Analysis

Road width for local street bikeway:
 2x2.4m for parking
 4.6 - 5.5m for drive aisle (Parking Occupancy >40%)
 =9.4m lower & 10.3m upper
EX. Road width is below low criteria by 1.0m (8.5m vs. 9.4m)

Road width for local street bikeway:
 2x2.4m for parking
 3.6 - 5.5m for drive aisle (Parking Occupancy <40%)
 =8.4m lower & 10.3m upper
EX. Road width is close to low end criteria (8.3 to 8.4m)

LONDON STREET — LONDON PL / 22ND ST
 1: 500



London St - 21st St to 22nd St
 North Parking Occupancy - 6%
 South Parking Occupancy - 20%
 Average for N+S = **13%**
 Source: Street Occupancy Survey Data Analysis

London St - 20th to 21st St
 North Parking Occupancy - 35%
 South Parking Occupancy - 43%
 Average for N+S = **39%**
 Source: Street Occupancy Survey Data Analysis

Road width for local street bikeway:
 2x2.4m for parking
 3.6 - 5.5m for drive aisle (Parking Occupancy <40%)
 =8.4m lower & 10.3m upper
EX. Road width is slightly above low criteria

Road width for local street bikeway:
 2x2.4m for parking
 3.6 - 5.5m for drive aisle (Parking Occupancy <40%)
 =8.4m lower & 10.3m upper
EX. Road width is below low end criteria by 0.3m (8m vs 8.4m)

LONDON STREET — 22ND ST / 20TH ST
 1: 500

REV NO	REVISIONS	DATE	DRAWN	APPRD
1	FOR PRELIMINARY DESIGN DISCUSSION	2025-01-20	ZR	BF

ROAD WORKS

ATNP YEAR 2 IMPROVEMENTS
 CITY OF NEW WESTMINSTER



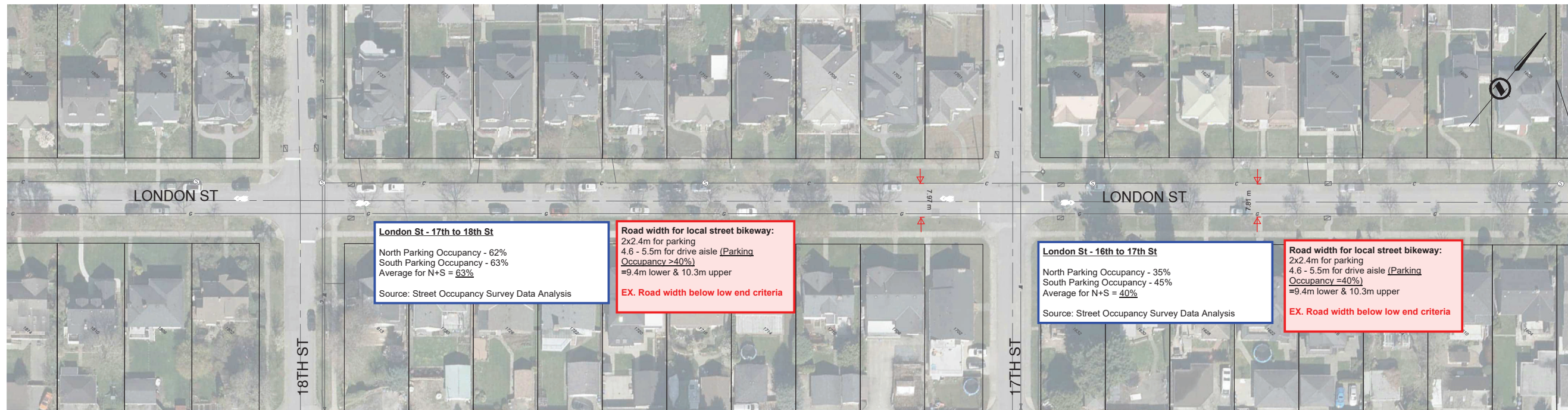
► **DESIGN**

SCALE	DATE	DESIGN NO.	DWG. NO.
1:500H 1:50V	2025-01-20	----	----
DRAWN BY	DESIGN BY		
Z. RICHARD	E. SWEETLAND		
CHECKED BY	APPROVED BY		
B. FAN	B. FAN		

PLOT DATE: February 5, 2025 - I:\urban-systems\comproje\proj\W\N\1274607610-Design\CAD\20_PROD\1274607610_DES.dwg



LONDON STREET – 20TH ST / 19TH ST
1: 500



LONDON STREET – 18TH ST / 16TH ST
1: 500

REV NO	REVISIONS	DATE	DRAWN	APPRD
1	FOR PRELIMINARY DESIGN DISCUSSION	2025-01-20	ZR	BF

**ROAD
WORKS**

ATNP YEAR 2 IMPROVEMENTS
CITY OF NEW WESTMINSTER



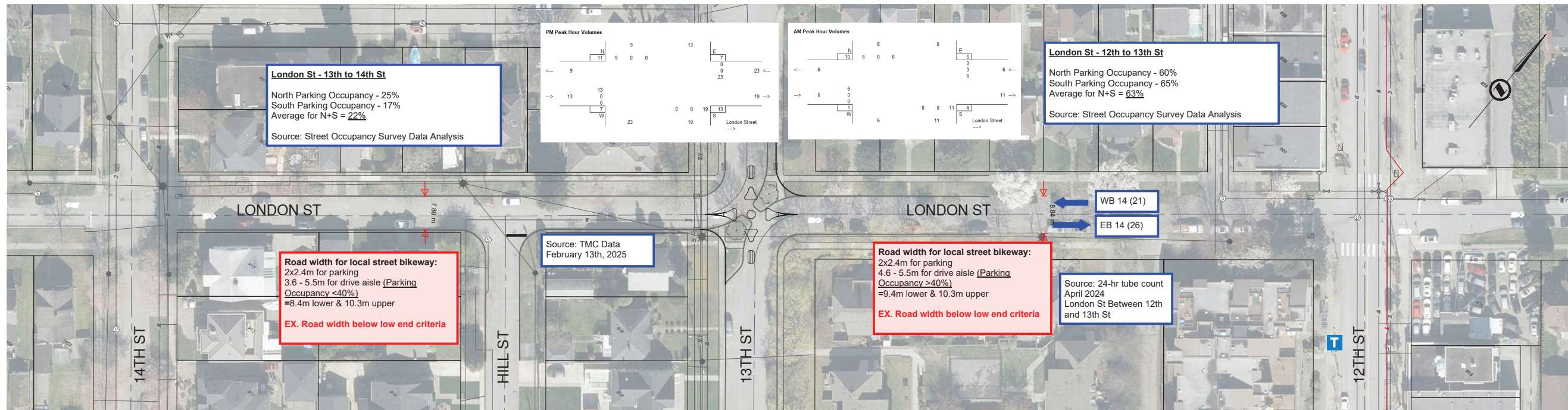
► **DESIGN**

SCALE		DESIGN NO.		DWG. NO.
1:500H 1:50V		2025-01-20		----
DRAWN BY	Z. RICHARD	DESIGN BY	E. SWEETLAND	----
CHECKED BY	B. FAN	APPROVED BY	B. FAN	OF 12
				REV. REV

PLOT DATE: February 5, 2025 - I:\urban-systems\comproje\Projects_W\N\1274007810-Design\Projects_W\N\1274007810-Design\CAD\20_PROD\1274007810_DES.dwg



LONDON STREET – 16TH ST / 14TH ST
1: 500



LONDON STREET – 14TH ST / 12TH ST
1: 500

REV NO	REVISIONS	DATE	DRAWN	APPRD
1	FOR PRELIMINARY DESIGN DISCUSSION	2025-01-20	ZR	BF

ROAD WORKS

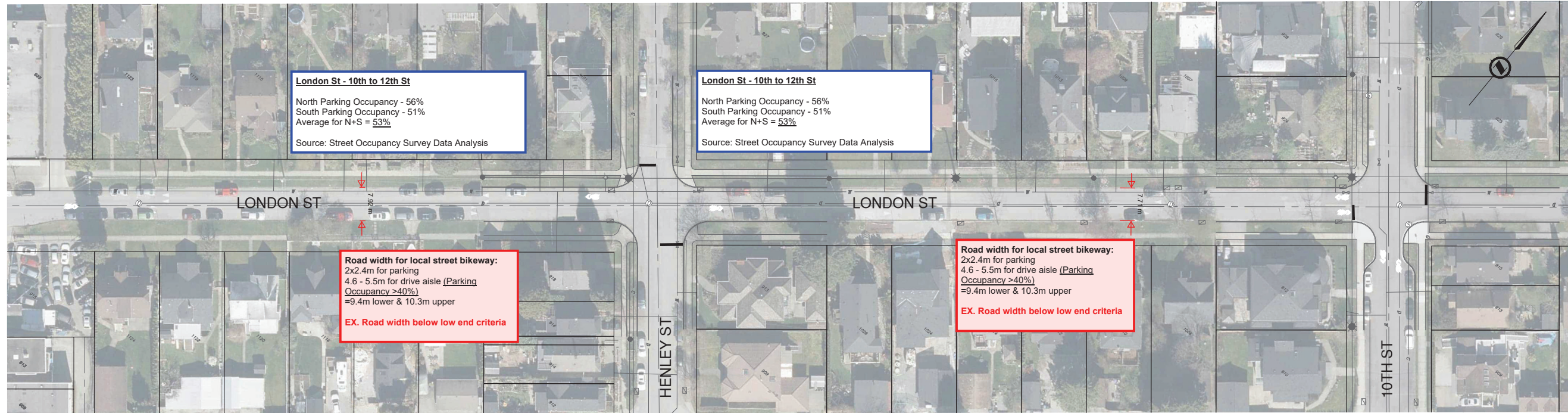
ATNP YEAR 2 IMPROVEMENTS
CITY OF NEW WESTMINSTER



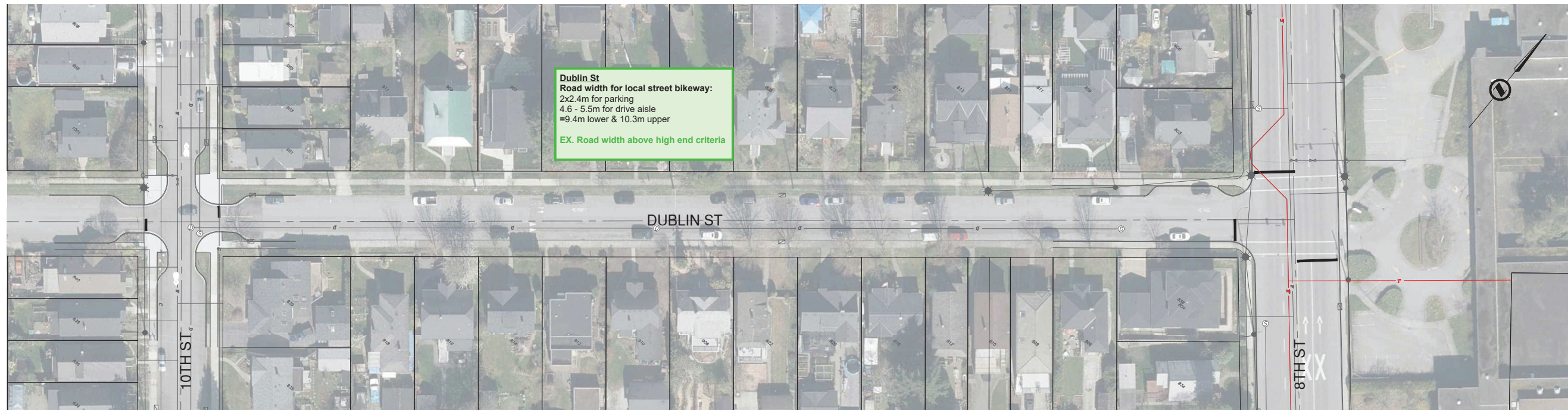
► DESIGN

SCALE		DESIGN NO.		DWG. NO.
1:500H	1:50V	DATE	2025-01-20	----
DRAWN BY	Z. RICHARD	DESIGN BY	E. SWEETLAND	---- OF 12
CHECKED BY	B. FAN	APPROVED BY	B. FAN	REV. REV

PLOT DATE: February 5, 2025 - I:\urban-systems\comprgical\Projects_VAN\127407810-Design\Projects_VAN\127407810-Design\CAD\20_PROD\127407810_DES.dwg



LONDON STREET – 12TH ST / 10TH ST
 1: 500



DUBLIN STREET – 10TH ST / 8TH ST
 1: 500

REV NO	REVISIONS	DATE	DRAWN	APPRD
1	FOR PRELIMINARY DESIGN DISCUSSION	2025-01-20	ZR	BF

ROAD WORKS

ATNP YEAR 2 IMPROVEMENTS
 CITY OF NEW WESTMINSTER



► **DESIGN**

SCALE	DATE	DESIGN NO.	DWG. NO.
1:500H 1:50V	2025-01-20	----	----
DRAWN BY	DESIGN BY		
Z. RICHARD	E. SWEETLAND		
CHECKED BY	APPROVED BY		
B. FAN	B. FAN		

PLOT DATE: February 5, 2025 - I:\urban-systems\comprginal\Projects_VAN\274607610-Design\Projects_VAN\274607610-Design\CAD\20_PROD\274607610_DES.dwg



NWSS SITE
1:500

REV NO	REVISIONS	DATE	DRAWN	APPRD
1	FOR PRELIMINARY DESIGN DISCUSSION	2025-01-20	ZR	BF

**ROAD
WORKS**

ATNP YEAR 2 IMPROVEMENTS
CITY OF NEW WESTMINSTER



► **DESIGN**

DESIGN NO. ----

SCALE	1:500H 1:50V	DATE	2025-01-20	DWG. NO.	----
DRAWN BY	Z. RICHARD	DESIGN BY	E. SWEETLAND	----	OF 12
CHECKED BY	B. FAN	APPROVED BY	B. FAN	REV.	REV.