

## Attachment 1

*Title to Highway (Portion of Keary Street) Bylaw  
No. 8533, 2025*

**THE CORPORATION OF THE CITY OF NEW WESTMINSTER**

**BYLAW NO. 8533, 2025**

**A Bylaw to Register Title for a Portion of Keary Street**

---

WHEREAS, pursuant to Section 142(3) of the *Land Title Act*, Council may, by bylaw, authorize an application to be made for the registration of the municipality's title to all or part of highway and, on registration, the municipality may create air space parcels and deal with them under the *Land Title Act*.

AND WHEREAS the Council of the Corporation of the City of New Westminster wishes to register title for a 144.3m<sup>2</sup> portion of Keary Street via the deposit of Plan EPP147510, a copy of which is attached hereto as Schedule "A", which area is shown outlined in bold black and labelled "Parcel A" on such plan ("Parcel A");

AND WHEREAS following registration of title for Parcel A, the Council of the Corporation of the City of New Westminster wishes to create an airspace parcel and deal with it under the *Land Title Act*;

NOW THEREFORE the Council of the Corporation of the City of New Westminster, in open meeting assembled, ENACTS AS FOLLOWS:

1. This Bylaw may be cited for all purposes as "Title to Highway (Portion of Keary Street) Bylaw No. 8533, 2025".
2. Attached to and forming part of this Bylaw as Schedule "A" is a reduced copy of Reference Plan EPP147510, prepared by Jesse Morin, BCLS 880.
3. The City hereby authorizes application to be made for the registration of the Municipality's title to Parcel A and the creation of airspace parcels that can be dealt with under the *Land Title Act*.

READ A FIRST TIME this \_\_\_\_\_ day of \_\_\_\_\_, 2025.

READ A SECOND TIME this \_\_\_\_\_ day of \_\_\_\_\_, 2025.

READ A THIRD TIME this \_\_\_\_\_ day of \_\_\_\_\_, 2025.

ADOPTED this \_\_\_\_\_ day of \_\_\_\_\_, 2025.

---

Mayor Patrick Johnstone

---

Hanieh Berg, Corporate Officer

**SCHEDULE "A"**

**PLAN EPP147510**

0 5 15 30

SCALE 1 : 300 DISTANCES ARE IN METRES

THE INTENDED PLOT SCALE OF THIS PLAN IS  
864 mm IN WIDTH BY 560 mm IN HEIGHT (D SIZE)



INTEGRATED SURVEY AREA No. 49, NEW WESTMINSTER  
NAD83(CSR)S 4.0.0.BC.1.MVRD

GRID BEARINGS ARE DERIVED FROM OBSERVATIONS BETWEEN  
GEODETIC CONTROL MONUMENTS 89H5594 AND 89H5597 AND ARE  
REFERRED TO CENTRAL MERIDIAN OF UTM ZONE 10.

THE UTM COORDINATES AND ESTIMATED ABSOLUTE ACCURACY  
ACHIEVED ARE DERIVED FROM THE MASCOB PUBLISHED COORDINATE  
FOR GEODETIC CONTROL MONUMENTS  
89H5594 AND 89H5597.

THIS PLAN SHOWS HORIZONTAL GROUND-LEVEL DISTANCES, UNLESS OTHERWISE SPECIFIED. TO COMPUTE GRID DISTANCES, MULTIPLY GROUND-LEVEL DISTANCES BY THE AVERAGE COMBINED FACTOR OF 0.9995988 WHICH HAS BEEN DERIVED FROM GEODETIC CONTROL MONUMENTS 89H5594 AND 89H5597.

FOUND PLACED

 DENOTES CONTROL MONUMENT  
 DENOTES LEAD PLUG  
 DENOTES STANDARD IRON POST  
*Wt.* DENOTES WITNESS  
*m*<sup>2</sup> DENOTES SQUARE METRES  
 + DENOTES UNMONUMENTED POINT

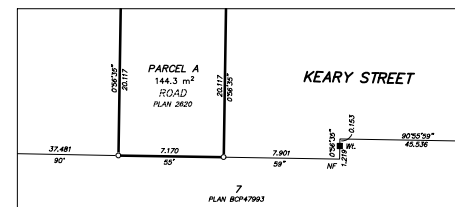
NOTE:  
THIS PLAN SHOWS ONE OR MORE WITNESS POSTS WHICH ARE NOT  
SET BY THE TRAP COMPANY.

WITNESS POSTS ARE ON THE PRODUCTION OF PROPERTY LINES  
UNLESS OTHERWISE NOTED

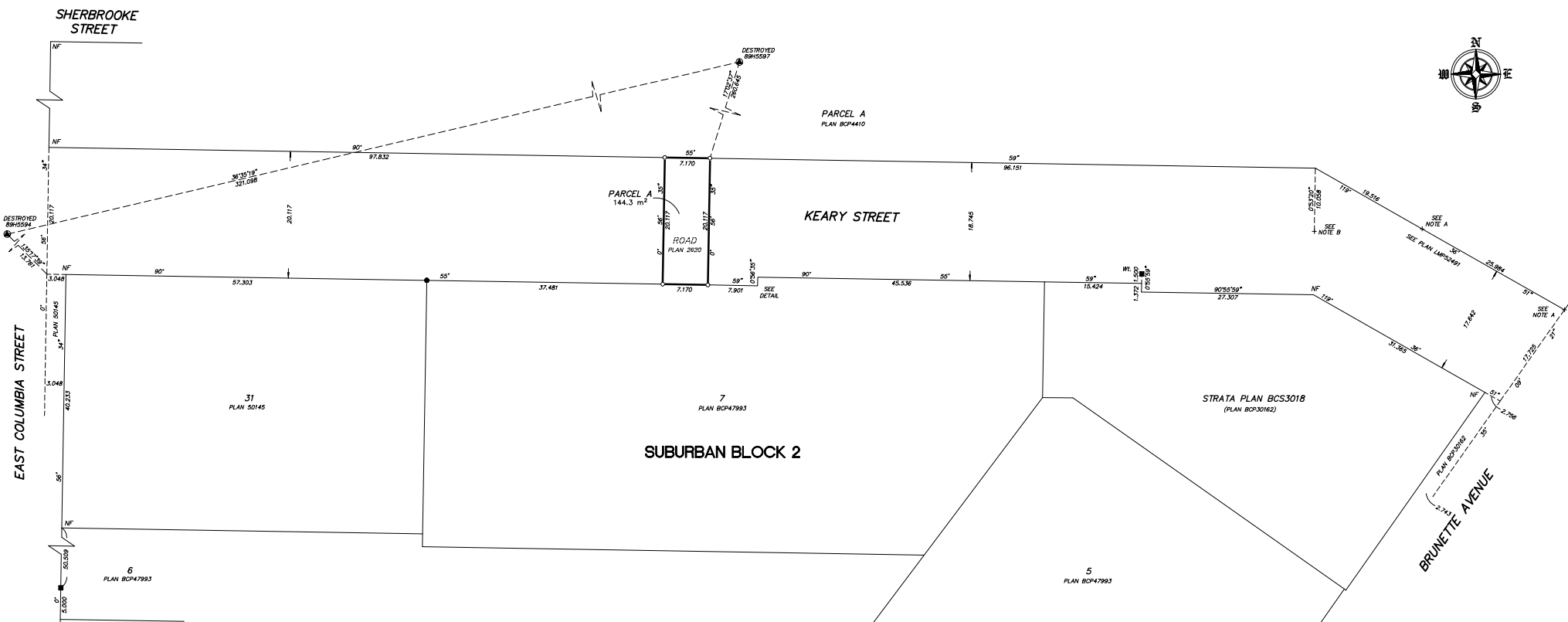
NOTE A: UNMONUMENTED MEANS A LOST IP PREVIOUSLY  
TIED ON JAN 10, 2002 (SEE PLAN LMP52491),  
FROM ORIGINAL CONTROL TRAVERSE

NOTE B: UNMONUMENTED MEANS A LOST CONCRETE POST  
PREVIOUSLY TIED ON JAN 10, 2002 (SEE PLAN LMP52491).  
FROM ORIGINAL CONTROL TRAVERSE

NAD83 (CSRS) 4.0.0.BC.1.MYRD UTM ZONE 10 COORDINATES			
TABLET MARKING	NORTHING	EASTING	ABSOLUTE ACCURACY
89H5594	5452535.187 m	507799.996 m	0.02 m
89H5597	5452792.922 m	507991.327 m	0.02 m



DETAIL  
NOT TO SCALE



THE FIELD SURVEY REPRESENTED BY THIS PLAN WAS  
COMPLETED ON THE 19<sup>th</sup> DAY OF AUGUST, 2025  
JESSE MORIN, BOLS (880)  
FCR# 294547

THIS PLAN LIES WITHIN THE METRO VANCOUVER REGIONAL DISTRICT