

Attachment #2

Finalized Engineering Drawings of the DAS Installation and Antenna Locations



SITE NAME: ANVIL CENTRE

SITE ID: W5994

LOCATION: 777 COLUMBIA ST
NEW WESTMINSTER, BC

- DRAWING LIST:**
- E001 TITLE PAGE
 - E002 ELECTRICAL SPECIFICATIONS
 - E003 ANTENNA AND EQUIPMENT DETAILS
 - E101 LEVEL P3
 - E102 LEVEL P2
 - E103 LEVEL P1
 - E103A LEVEL P1 (UPPER LEVEL)
 - E104 LEVEL 1
 - E105 LEVEL 2
 - E106 LEVEL 3
 - E107 LEVEL 4
 - E201 EQUIPMENT LAYOUT
 - E301 ANTENNA MOUNTING DETAILS
 - E302 GPS ANTENNA DETAILS

	2024.07.19	REVISED PER CITY
	2024.02.07	GENERAL REVISIONS
	2023.12.22	ISSUED FOR 90% COORDINATION
No.:	Date:	Description:

<div>Copyright Reserved.</div> <div>This plan and design are, and at all times remain the exclusive property of GS Sayers Engineering Ltd. and cannot be used or reproduced without written consent. Written dimensions shall have precedence over scaled dimensions. Contractors shall verify and be responsible for all dimensions and conditions on the job and this office shall be informed of any variations from the dimensions and conditions shown on the drawings.</div> <div>Sketches may be issued which augment or alter the information presented on this drawing. It is the responsibility of parties using this drawing to ensure that they are in possession of all such sketches.</div>	<div><div><div>GS</div><div>GS Sayers</div><div>ENGINEERING LTD.</div></div><div>1661 West 5th Avenue Vancouver, BC V6J 1N5 T: 604.734.8822 F: 604.734.8842 www.glotmansimpson.com</div></div>	<div>Project: Site ID: W5994</div> <div>ANVIL CENTRE 777 COLUMBIA ST, NEW WESTMINSTER, BC</div> <div></div>	<div>EGBC Permit To Practice: 1003171</div> <div>Sheet Title: TITLE PAGE</div>	Revisions:	
				Date: DEC 2023	Drawing: E001
				Scale: NA	
				Drawn: CW	
				Checked: CB	
				Project: 223462	

GENERAL ELECTRICAL

1. ALL WORK TO COMPLY WITH THE LATEST ADOPTED PROVINCIAL BUILDING CODE, THE 2021 CANADIAN ELECTRICAL CODE (CEC) , ANY BULLETINS ISSUED BY THE LOCAL JURISDICTION, CARRIER SPECIFICATIONS AND APPLICABLE UTILITY GUIDELINES.
2. OBTAIN ALL NECESSARY ELECTRICAL PERMITS AND PAY ALL FEES AS REQUIRED TO COMPLETE THE ELECTRICAL WORK. UPON PROJECT COMPLETION AND PRIOR TO REQUESTING A FINAL INSPECTION, DELIVER A COPY OF THE FINAL ELECTRICAL INSPECTION CERTIFICATE TO THE ENGINEER.
3. REVIEW THE ELECTRICAL DRAWINGS IN CONJUNCTION WITH ALL OTHER DRAWINGS AND SPECIFICATIONS PROVIDED FOR THE PROJECT. PRIOR TO CONSTRUCTION, PERFORM ON-SITE VERIFICATION OF THE EXISTING SITE AND ELECTRICAL SYSTEM (AS APPLICABLE) AND REPORT ANY DISCREPANCIES TO THE ENGINEER. FIELD MEASUREMENTS AND EXACT RACEWAY ROUTING ARE THE RESPONSIBILITY OF THE CONTRACTOR (AND MUST BE CONSIDERED PRIOR TO SUBMITTING BID).
4. PROVIDE ALL LABOUR AND MATERIALS NECESSARY TO PROVIDE A COMPLETE AND OPERATIONAL ELECTRICAL SYSTEM.
5. OBTAIN LOCATES PRIOR TO ANY EXCAVATION AND PROTECT ALL BURIED UTILITIES. REINSTATE ALL DISTURBED SURFACES TO PRE-CONSTRUCTION CONDITIONS.
6. ENSURE ALL EXTERIOR WALL PENETRATIONS ARE WATERTIGHT.
7. PROVIDE A 3mm NYLON PULL CORD IN ALL CONDUITS.
8. PROVIDE A SEPARATE BONDING CONDUCTOR IN ALL POWER RACEWAYS.
9. PRIOR TO ORDERING EQUIPMENT, PROVIDE SHOP DRAWINGS (2 SETS) FOR ALL ELECTRICAL EQUIPMENT SPECIFIED FOR APPROVAL.
10. ALL ELECTRICAL EQUIPMENT TO BE CSA OR ULC MARKED.
11. ALL POWER WIRING TO BE 600V RW90 STRANDED COPPER UNLESS NOTED OTHERWISE.
12. ALL EQUIPMENT RATED 60A OR MORE TO BE LISTED FOR USE WITH 75°C CONDUCTORS MIN.
13. ALL ELECTRICAL DISTRIBUTION EQUIPMENT TO BE SUPPLIED WITH APPROPRIATE ENCLOSURES WHEN LOCATED WITHIN SPRINKLERED AREAS.
14. PROVIDE NAMEPLATES IN ACCORDANCE WITH NAMEPLATE SCHEDULE. NAMEPLATES TO BE PHENOLIC PLASTIC LAMINATE WITH MACHINE ENGRAVED LETTERS (BLACK PLATE AND WHITE LETTERS) U.N.O. ATTACH NAMEPLATES WITH SELF TAPPING SCREWS OR RIVETS.
15. LEAVE ALL AREAS IN A CLEAN STATE AT CONSTRUCTION COMPLETION. TOUCH UP PAINT ALL DISTURBED SURFACES.
16. PROVIDE A COMPLETE SET OF AS-BUILT REDLINES AT PROJECT COMPLETION.
17. REARRANGE CIRCUITING OF ALL PANELBOARDS INVOLVED WITH PROJECT TO ENSURE A BALANCED LOAD ACROSS ALL PHASES.
18. ALL NEW OVERCURRENT DEVICES AND ELECTRICAL EQUIPMENT TO HAVE AN A.I.C. RATING GREATER THAN THE AVAILABLE FAULT CURRENT THEY MAY BE SUBJECTED TO (10ka MIN).
19. VERTICAL CONDUCTORS TO BE SUPPORTED AT INTERVALS AS SPECIFIED IN CEC RULE 12-120 AND TABLE 21.
20. WHERE CONDUITS/DUCTS TRANSITION FROM BELOW GRADE TO VERTICAL, PROVIDE (ABOVE GRADE) EXPANSION JOINTS IN ACCORDANCE WITH CEC RULE 12-012 (12).
21. WHEN EQUIPMENT MODIFICATIONS ARE REQUIRED TO FACILITATE CONDUCTOR CONNECTIONS TO AN EXISTING SWITCHBOARD, BUS DUCT ETC, THE CONTRACTOR MUST OBTAIN WRITTEN APPROVAL (INCLUDING INSPECTION) FROM THE MANUFACTURER OR CSA ACCREDITED 3RD PARTY FOR THE REQUIRED MODIFICATIONS.
22. ALL RACEWAYS SUSPENDED BY MORE THAN 300mm FROM THE SUPPORTING STRUCTURE MUST BE SEISMICALLY RESTRAINED IN ACCORDANCE WITH THE SEISMIC RESTRAINT STANDARDS MANUAL – GUIDELINES FOR ELECTRICAL SYSTEMS (LATEST EDITION) AS PUBLISHED BY THE ELECTRICAL CONTRACTORS ASSOCIATION OF BC. SUBMIT SEISMIC RESTRAINT SHOP DRAWINGS FOR APPROVAL PRIOR TO CONSTRUCTION.

GROUNDING

1. COMPLY WITH CARRIER'S SPECIFIC SITE GROUNDING REQUIREMENTS.
2. ALL INSULATED GROUND CABLES TO HAVE TWH INSULATION.
3. ALL GROUNDING TO COMPLY WITH THE 2021 CEC, ANY BULLETINS ISSUED BY THE LOCAL JURISDICTION AND UTILITY GUIDELINES (WHEN APPLICABLE).
4. ENSURE ALL GROUNDING CONNECTIONS ARE CLEAN AND FREE OF PAINT AND DIRT AT THEIR MATING SURFACES. USE SUITABLE ANTIOXIDANT GREASE (PENETROX OR EQUAL) AT ALL MECHANICAL CONNECTIONS.
5. INSTALL ALL GROUNDING CONNECTIONS IN ACCORDANCE WITH MANUFACTURER'S INSTRUCTIONS. ENSURE CORRECT TORQUE IS ACHIEVED WHERE APPLICABLE.
6. ALL GROUND BAR CONNECTIONS TO BE TWO HOLE LUG LONG BARREL COMPRESSION TYPE. GROUND BARS ARE TO BE 6mm TINNED COPPER.
7. ALL UNDERGROUND GROUND CONNECTIONS TO BE CADWELD U.N.O.
8. MINIMUM BEND RADIUS FOR GROUND CABLES IS 200mm.

CORING

1. ALL WALLS AND FLOOR SLABS ARE TO BE X-RAYED OR FEROSCANNED TO DETERMINE REBAR, PT CABLE & CONDUIT LOCATIONS PRIOR TO CORE DRILLING. ENSURE THAT REBAR, PT CABLES & CONDUITS ARE NOT CUT OR DAMAGED DURING CORING.
2. DO NOT CORE DRILL THROUGH COLUMN CAPS.
3. COORDINATE CORING ACTIVITIES WITH CONSTRUCTION MANAGER TO ENSURE BUILDING TENANTS ARE NOT ADVERSELY AFFECTED.

FIRESTOPPING

1. FIRESTOPPING SYSTEMS TO COMPLY WITH CAN4-S115-M OR ULC S-115-M TESTED ASSEMBLIES, BUILDING CODE AND JURISDICTION'S REQUIREMENTS.
2. ALL FIRE SEPARATION PENETRATIONS ARE TO BE FIRESTOPPED WITH ULC "F" RATING IN ACCORDANCE WITH THE FOLLOWING TABLE:

FIRE-RESISTANCE RATING OF SEPARATION	REQUIRED ULC "F" RATING
30 MIN	20 MIN
45 MIN	45 MIN
1 HR	45 MIN
1.5 HR	1 HR
2 HR	1.5 HR
3 HR	2 HR
4HR	3 HR

3. PENETRATIONS OF FIREWALLS AND HORIZONTAL FIRE SEPARATIONS REQUIRED BY BUILDING CODE SECTION 3.2.1.2 ARE TO BE FIRESTOPPED WITH ULC 'F' RATING NOT LESS THAN THE FIRE-RESISTANCE RATING FOR THE FIRE SEPARATION.
4. COMBUSTIBLE PENETRATIONS ARE ALLOWED ONLY FOR CABLES UP TO 25mm IN DIA. FOR LARGER DIA. CABLES, ASSEMBLY MUST BE TESTED INCORPORATING CABLE PENETRATIONS.
5. PROVIDE SHOP DRAWINGS FOR ALL FIRESTOPPING PRODUCTS USED. SUBMITTAL TO INCLUDE THE FOLLOWING INFORMATION:

- PRODUCT COMPLIANCE WITH ITEMS 1,2,3 AND 4 ABOVE INCLUDING ULC (OR EQUIVALENT) SYSTEM NUMBERS.
- EXISTING ASSEMBLY CONSTRUCTION AT EACH PENETRATION CORRELATED WITH FIRESTOPPING SYSTEM.

LABELING

1. ANTENNAS TO BE LABELED WITH NAME AND/OR NUMBER (BACK SIDE).
2. SPLITTERS TO BE LABELED WITH NAME AND/OR NUMBER (FRONT SIDE).
3. LABEL COAX DESTINATION WITHIN 1m OF EVERY CONNECTION WITH T&B TY-RAP TY153MFR OR EQUIVALENT.
4. LABEL COAX (VERTICAL RUNS) "PROPERTY OF ROGERS" IN EVERY RISER ROOM WITH PHENOLIC PLASTIC LAMINATE PLATES OR T&B TY-RAP TY153MFR OR EQUIVALENT.
5. LABEL COAX (HORIZONTAL RUNS) "PROPERTY OF ROGERS" APPROXIMATELY EVERY 15m WITH PHENOLIC PLASTIC LAMINATE PLATES OR T&B TY-RAP TY153MFR OR EQUIVALENT.

COAX


1. SECURE COAX EVERY 3m WITH TY-RAP's WHEN IN CABLE TRAY. OUTSIDE OF TRAY, SUPPORT AT 1.5m WITH MANUFACTURER APPROVED HANGERS. COAX CAN BE LAID DIRECTLY ON DRYWALL CEILINGS WHEN ACCESS IN NOT AVAILABLE.
2. SECURE COAX WITHIN 1m OF ANY CONNECTION OR TERMINATION WITH MANUFACTURER APPROVED HANGERS.
3. ALL INTERIOR CABLING SHALL BE FT6 RATED.

FIBER

1. FIBER CABLES TO BE SINGLE MODE.
2. INTERIOR FIBER CABLES NOT IN METALLIC CONDUIT TO BE MIN. FT4 RATED (MIN. FT6 WHEN IN PLENUMS).
3. FIBER CABLES TO BE INDEPENDENTLY SUPPORTED (J-HOOKS, SADDLES ETC) AT MAX. 1.2m SPACING WHERE CABLE TRAY OR RACEWAY IS NOT AVAILABLE.
4. LABEL FIBER CABLES PER ROGERS SPECIFICATIONS.

ALL CABLES NOT IN METALLIC CONDUIT TO BE FT4 RATED (MIN. FT6 RATED IN PLENUMS)


LEGEND:


 – INDICATES PARTICULAR ATTENTION SHOULD BE GIVEN TO WHAT IS NOTED ON THE DRAWING

(E) – DENOTES EXISTING


(F) – DENOTES FUTURE

(TYP) – DENOTES TYPICAL


 – DENOTES OMNI ANTENNA. SEE E003 FOR DETAILS

 – DENOTES DIRECTIONAL ANTENNA. SEE E003 FOR DETAILS

 – DENOTES SPLITTER(S).

 – DENOTES HUB–85015684 (1/2” COAX)

 – DENOTES HJ5RPV–50 (7/8” COAX)

 – DENOTES FIBER CABLE (24 STRAND SM ARMoured)

ANTENNA POSITIONS SHOWN ARE APPROXIMATE AND ARE TO BE VERIFIED WITH **ROGERS** PRIOR TO FINAL INSTALLATION. CONTRACTOR TO COORDINATE WITH **ROGERS** PROJECT MANAGER. ANTENNAS ARE CEILING MOUNTED (UNLESS NOTED OTHERWISE). ANTENNAS ARE TO ALIGN WITH EXISTING INFRASTRUCTURE

	2024.07.19	REVISED PER CITY
	2024.02.07	GENERAL REVISIONS
	2023.12.22	ISSUED FOR 90% COORDINATION
No.:	Date:	Description:

EGBC Permit To Practice: 1003171	Revisions:	
Sheet Title: ELECTRICAL SPECIFICATIONS	Date: DEC 2023	Drawing: E002
	Scale: NA	
	Drawn: CW	
	Checked: CB	
	Project: 223462	Of

Copyright Reserved.

This plan and design are, and at all times remain the exclusive property of GS Sayers Engineering Ltd. and cannot be used or reproduced without written consent. Written dimensions shall have precedence over scaled dimensions. Contractors shall verify and be responsible for all dimensions and conditions on the job and this office shall be informed of any variations from the dimensions and conditions shown on the drawings.

Sketches may be issued which augment or alter the information presented on this drawing. It is the responsibility of parties using this drawing to ensure that they are in possession of all such sketches.



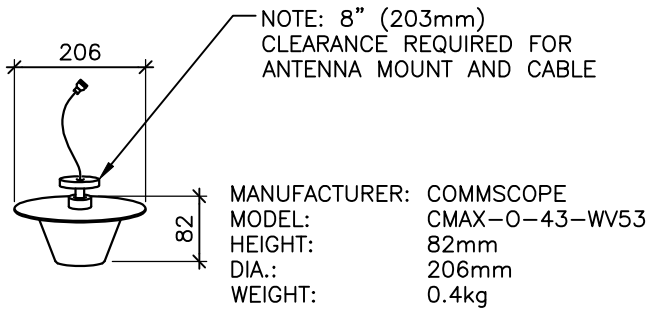
GS·Sayers
ENGINEERING LTD.

1661 West 5th Avenue
Vancouver, BC V6J 1N5
T: 604.734.8822
F: 604.734.8842
www.glotmansimpson.com

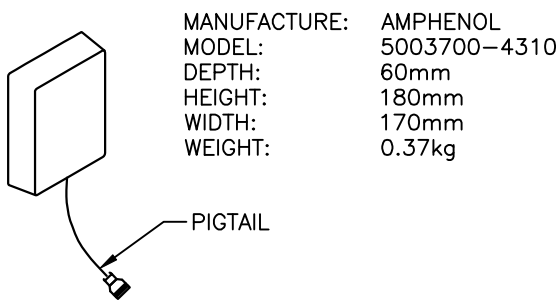
Project:ANVIL CENTRE
777 COLUMBIA ST, NEW WESTMINSTER, BC

Site ID: **W5994**





OMNI ANTENNA

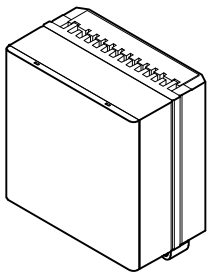


DIRECTIONAL ANTENNA



MANUFACTURER: ERICSSON
MODEL: KRE1012395/2
HEIGHT: 74mm
DIAMETER: 77mm
WEIGHT: 0.3kg

GPS ANTENNA



MODEL: ERICSSON 4402
HEIGHT: 213mm
WIDTH: 200mm
DEPTH: 105mm
WEIGHT: 4.7kg

1

ANTENNA DETAILS

NTS

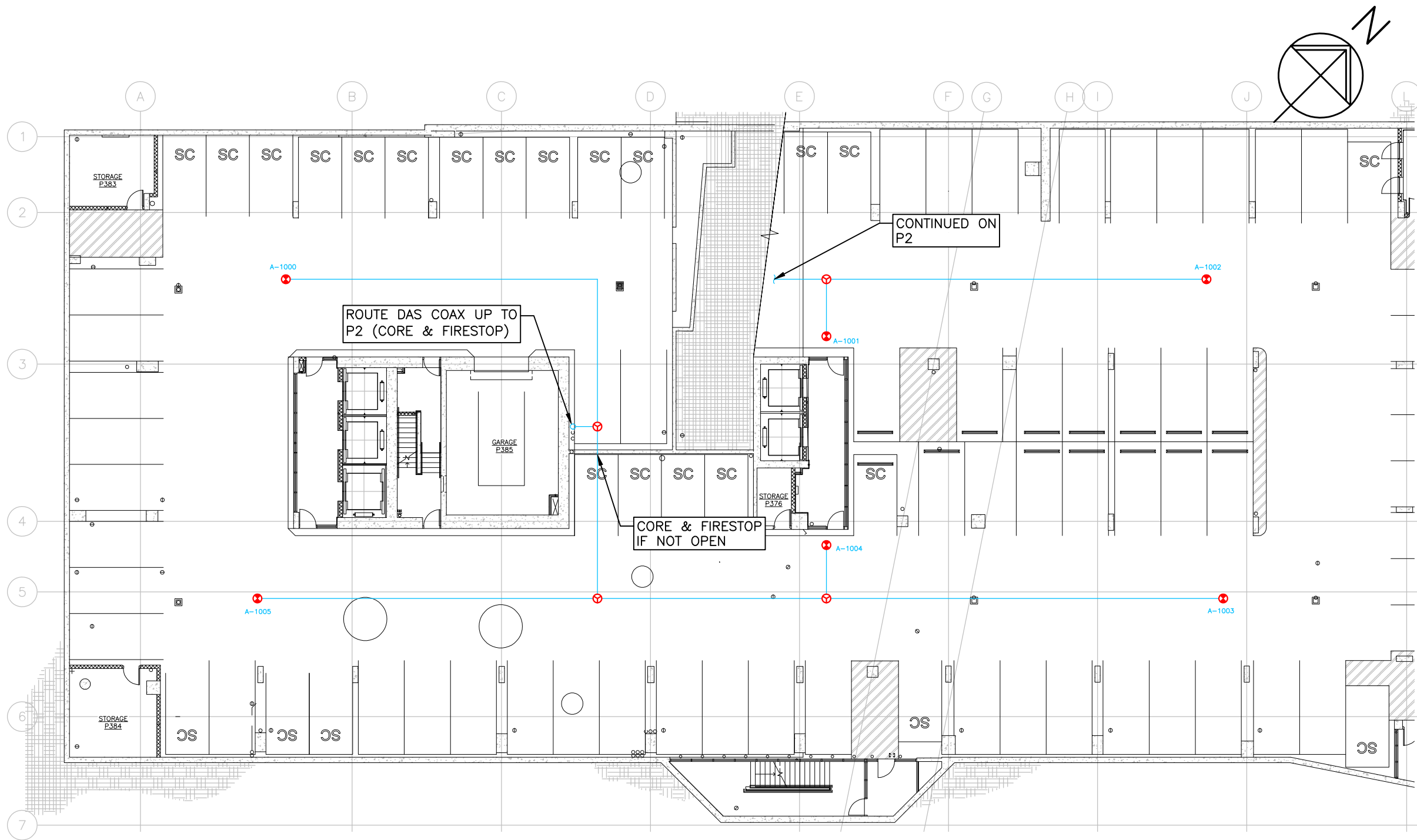
2

RRU DETAILS

NTS

	2024.07.19	REVISED PER CITY
	2024.02.07	GENERAL REVISIONS
	2023.12.22	ISSUED FOR 90% COORDINATION
No.:	Date:	Description:

<div>Copyright Reserved.</div> <div>This plan and design are, and at all times remain the exclusive property of GS Sayers Engineering Ltd. and cannot be used or reproduced without written consent. Written dimensions shall have precedence over scaled dimensions. Contractors shall verify and be responsible for all dimensions and conditions on the job and this office shall be informed of any variations from the dimensions and conditions shown on the drawings.</div> <div>Sketches may be issued which augment or alter the information presented on this drawing. It is the responsibility of parties using this drawing to ensure that they are in possession of all such sketches.</div>	<div><div>GS Sayers</div><div>ENGINEERING LTD.</div></div> <div>1661 West 5th Avenue Vancouver, BC V6J 1N5 T: 604.734.8822 F: 604.734.8842 www.glotmansimpson.com</div>	<div>Project: Site ID: W5994</div> <div>ANVIL CENTRE 777 COLUMBIA ST, NEW WESTMINSTER, BC</div> <div></div>	<div>EGBC Permit To Practice: 1003171</div> <div>Sheet Title: ANTENNA AND EQUIPMENT DETAILS</div>	Revisions:	
				Date: DEC 2023	Drawing: E003
				Scale: NTS	
				Drawn: CW	
				Checked: CB	
				Project: 223462	Of



NOTES:

- INSTALLATION REQUIREMENTS (OUTSIDE OF ELECTRICAL/COMM ROOMS):
 - EXPOSED CEILING/PARCADE AREAS:**
 - WHERE CABLE TRAY IS NOT AVAILABLE, CABLES TO BE RUN IN 53mm EMT SUPPORTED AT MIN. 3m O/C. SEE GENERAL NOTE 22 ON E002.
 - SPLITTERS TO BE LOCATED IN JUNCTION BOXES (SIZE TO SUIT).
 - ANTENNAS TO BE MOUNTED ON JUNCTION BOXES. SEE DETAIL 3 ON E301.
 - EMT AND JUNCTION BOXES TO BE PAINTED TO MATCH CEILING.
 - DROP CEILING AREAS:**
 - CABLES AND SPLITTERS TO BE LOCATED IN CEILING SPACE. USE EXISTING CABLE TRAY AND COMM. RACEWAYS WHERE AVAILABLE. SEE COAX AND FIBER NOTES ON E002.
 - ANTENNAS TO BE MOUNTED TO UNDERSIDE OF CEILING. SEE DETAIL 1 ON E301.
- REINSTATE ALL FIRESTOPPING WHEN RUNNING CABLES THROUGH EXISTING FLOOR OR WALL SLEEVES/RACEWAYS.
- CORE DRILL & FIRESTOP WHERE REQUIRED. SEE NOTES ON E002.

1 LEVEL P3
- 1:250

Copyright Reserved.
This plan and design are, and at all times remain the exclusive property of GS Sayers Engineering Ltd. and cannot be used or reproduced without written consent. Written dimensions shall have precedence over scaled dimensions. Contractors shall verify and be responsible for all dimensions and conditions on the job and this office shall be informed of any variations from the dimensions and conditions shown on the drawings.
Sketches may be issued which augment or alter the information presented on this drawing. It is the responsibility of parties using this drawing to ensure that they are in possession of all such sketches.



GS·Sayers
ENGINEERING LTD.

1661 West 5th Avenue
Vancouver, BC V6J 1N5
T: 604.734.8822
F: 604.734.8842
www.glotmansimpson.com

Project: Site ID: **W5994**
ANVIL CENTRE
777 COLUMBIA ST, NEW WESTMINSTER, BC

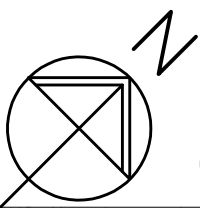
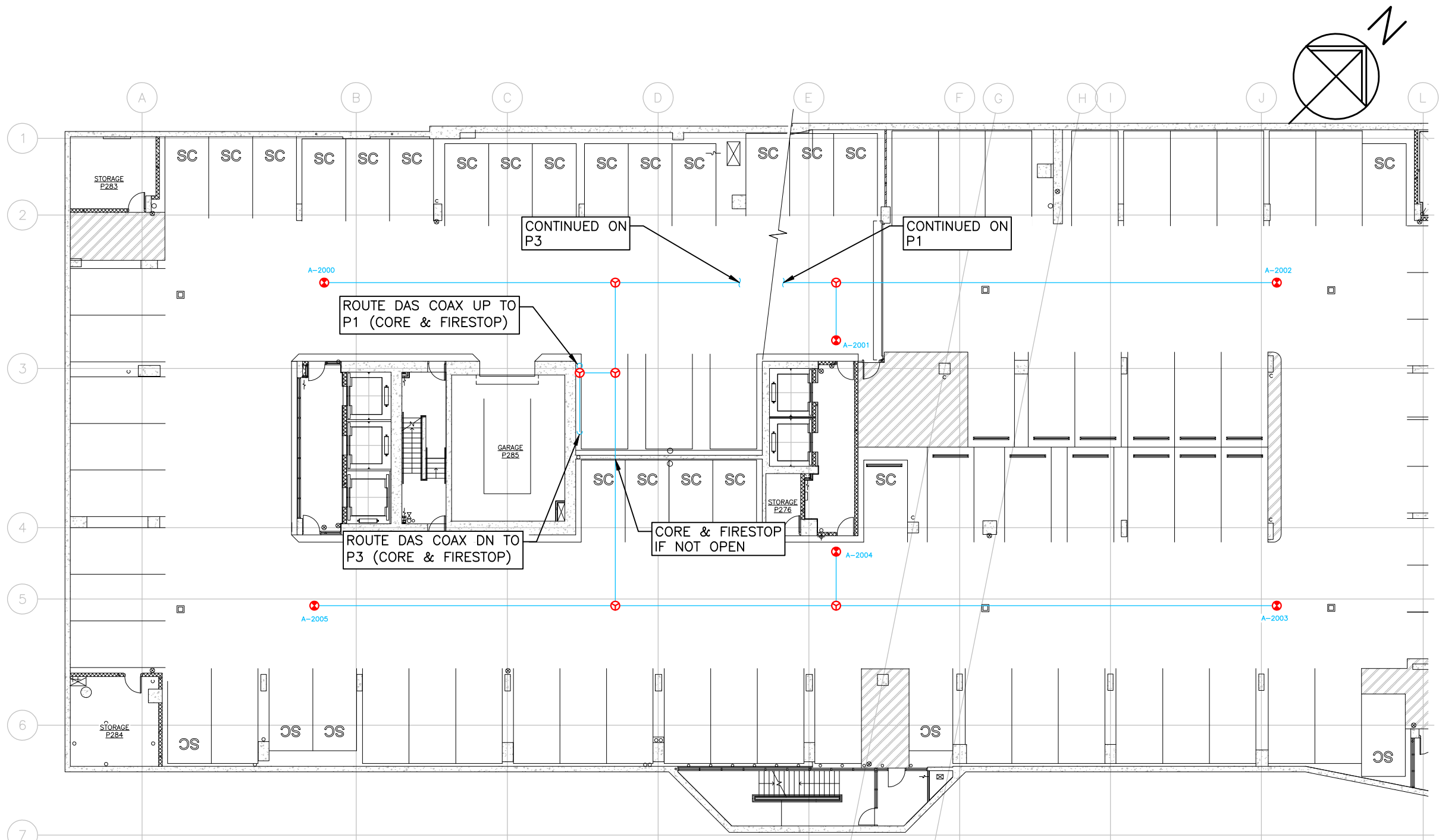


EGBC Permit To Practice: 1003171

Sheet Title:
LEVEL P3

	2024.07.19	REVISED PER CITY
	2024.02.07	GENERAL REVISIONS
	2023.12.22	ISSUED FOR 90% COORDINATION
No.:	Date:	Description:

Revisions:		
Date:	DEC 2023	Drawing: E101
Scale:	1:250	
Drawn:	CW	
Checked:	CB	
Project:	223462	Of



NOTES:

- 1. SEE NOTES ON E101.

1 LEVEL P2
- 1:250

	2024.07.19	REVISED PER CITY
	2024.02.07	GENERAL REVISIONS
	2023.12.22	ISSUED FOR 90% COORDINATION
No.:	Date:	Description:

EGBC Permit To Practice: 1003171

Revisions:		Drawing: E102
Date:	DEC 2023	
Scale:	1:250	
Drawn:	CW	
Checked:	CB	Of
Project:	223462	

Copyright Reserved.
This plan and design are, and at all times remain the exclusive property of GS Sayers Engineering Ltd. and cannot be used or reproduced without written consent. Written dimensions shall have precedence over scaled dimensions. Contractors shall verify and be responsible for all dimensions and conditions on the job and this office shall be informed of any variations from the dimensions and conditions shown on the drawings.
Sketches may be issued which augment or alter the information presented on this drawing. It is the responsibility of parties using this drawing to ensure that they are in possession of all such sketches.



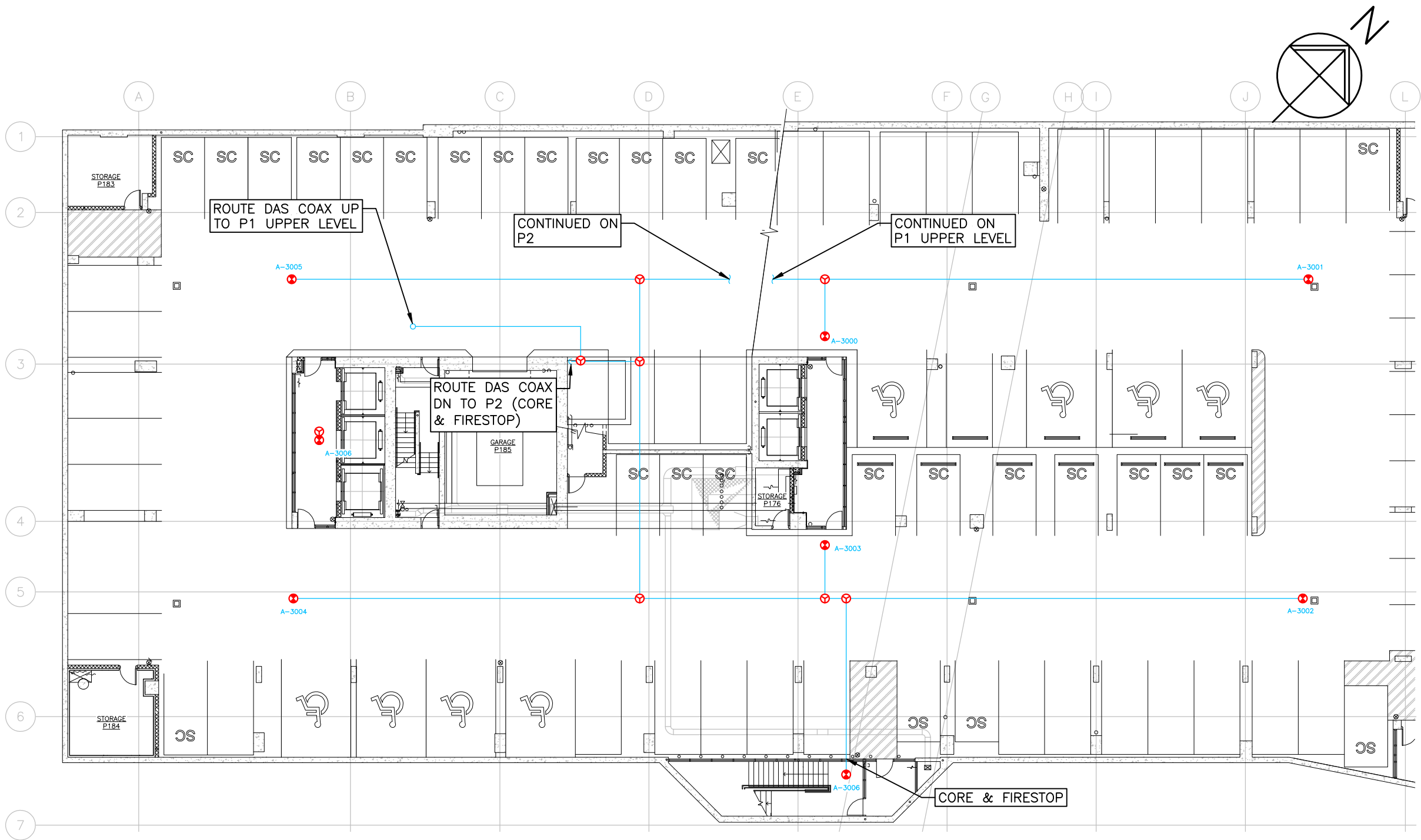
GS Sayers
ENGINEERING LTD.

1661 West 5th Avenue
Vancouver, BC V6J 1N5
T: 604.734.8822
F: 604.734.8842
www.glotmansimpson.com

Project: Site ID: **W5994**
ANVIL CENTRE
777 COLUMBIA ST, NEW WESTMINSTER, BC

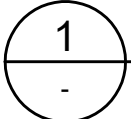


Sheet Title:
LEVEL P2



NOTES:

1. SEE NOTES ON E101.



LEVEL P1

1:250

	2024.07.19	REVISED PER CITY
	2024.02.07	GENERAL REVISIONS
	2023.12.22	ISSUED FOR 90% COORDINATION
No.:	Date:	Description:

Copyright Reserved.
This plan and design are, and at all times remain the exclusive property of GS Sayers Engineering Ltd. and cannot be used or reproduced without written consent. Written dimensions shall have precedence over scaled dimensions. Contractors shall verify and be responsible for all dimensions and conditions on the job and this office shall be informed of any variations from the dimensions and conditions shown on the drawings.
Sketches may be issued which augment or alter the information presented on this drawing. It is the responsibility of parties using this drawing to ensure that they are in possession of all such sketches.



GS·Sayers
ENGINEERING LTD.

1661 West 5th Avenue
Vancouver, BC V6J 1N5
T: 604.734.8822
F: 604.734.8842
www.glotmansimpson.com

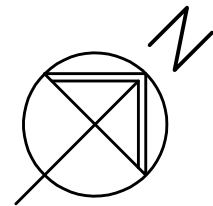
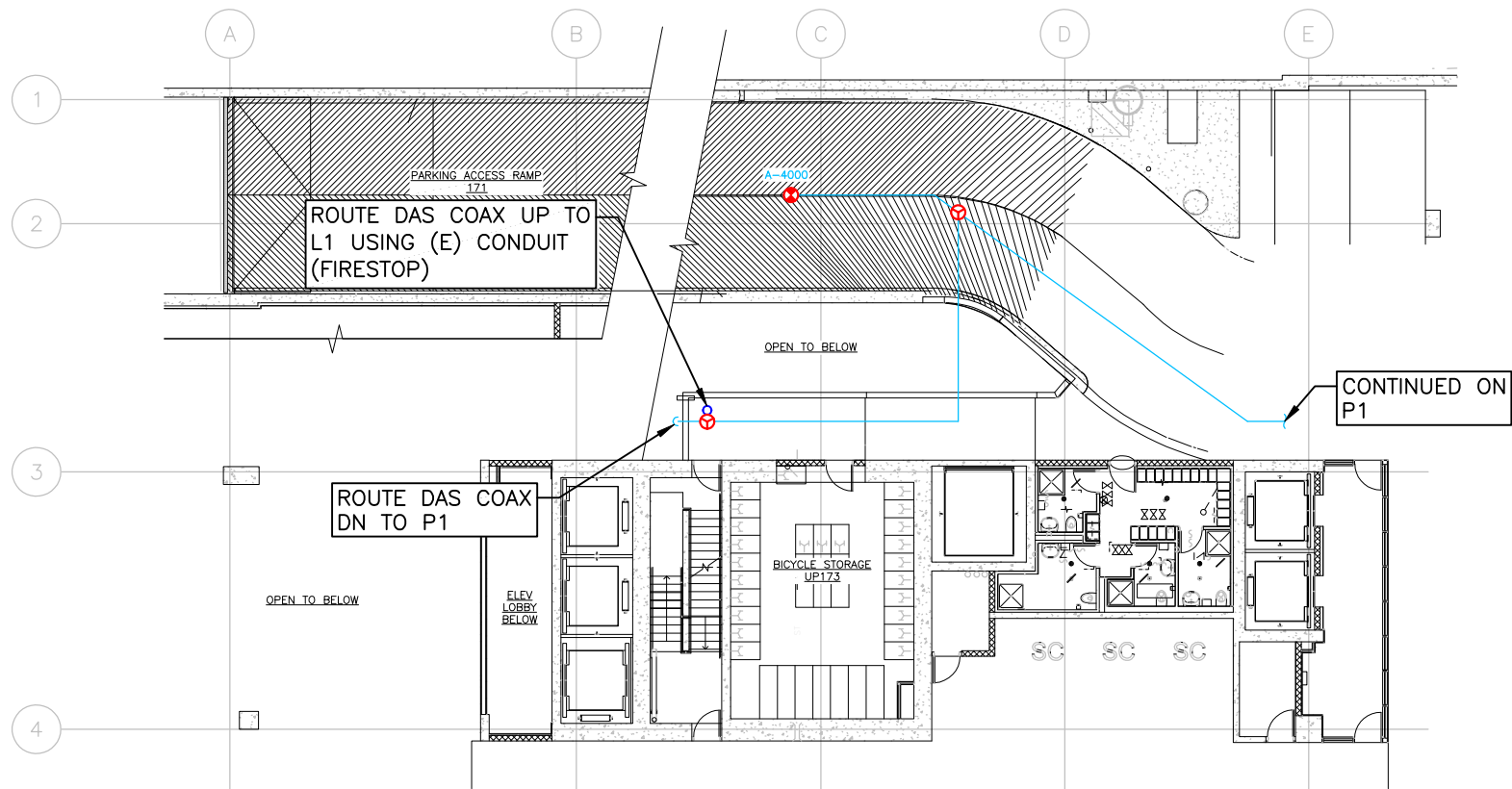
Project: Site ID: **W5994**
ANVIL CENTRE
777 COLUMBIA ST, NEW WESTMINSTER, BC



EGBC Permit To Practice: 1003171

Sheet Title:
LEVEL P1

Revisions:		E103
Date:	DEC 2023	
Scale:	1:250	
Drawn:	CW	
Checked:	CB	Of
Project:	223462	



- NOTES:**
- SEE NOTES ON E101.

1

-

LEVEL P1 (UPPER LEVEL)

1:250

	2024.07.19	REVISED PER CITY
	2024.02.07	GENERAL REVISIONS
	2023.12.22	ISSUED FOR 90% COORDINATION
No.:	Date:	Description:

Revisions:	
Date:	DEC 2023
Scale:	1:250
Drawn:	CW
Checked:	CB
Project:	223462
Of	

Drawing:	
E103A	

Copyright Reserved.

This plan and design are, and at all times remain the exclusive property of GS Sayers Engineering Ltd. and cannot be used or reproduced without written consent. Written dimensions shall have precedence over scaled dimensions. Contractors shall verify and be responsible for all dimensions and conditions on the job and this office shall be informed of any variations from the dimensions and conditions shown on the drawings.

Sketches may be issued which augment or alter the information presented on this drawing. It is the responsibility of parties using this drawing to ensure that they are in possession of all such sketches.

GS·Sayers
ENGINEERING LTD.

1661 West 5th Avenue
Vancouver, BC V6J 1N5
T: 604.734.8822
F: 604.734.8842
www.glotmansimpson.com

Project: Site ID: **W5994**

ANVIL CENTRE
777 COLUMBIA ST, NEW WESTMINSTER, BC

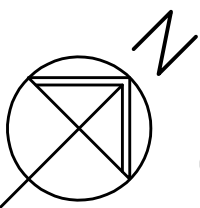
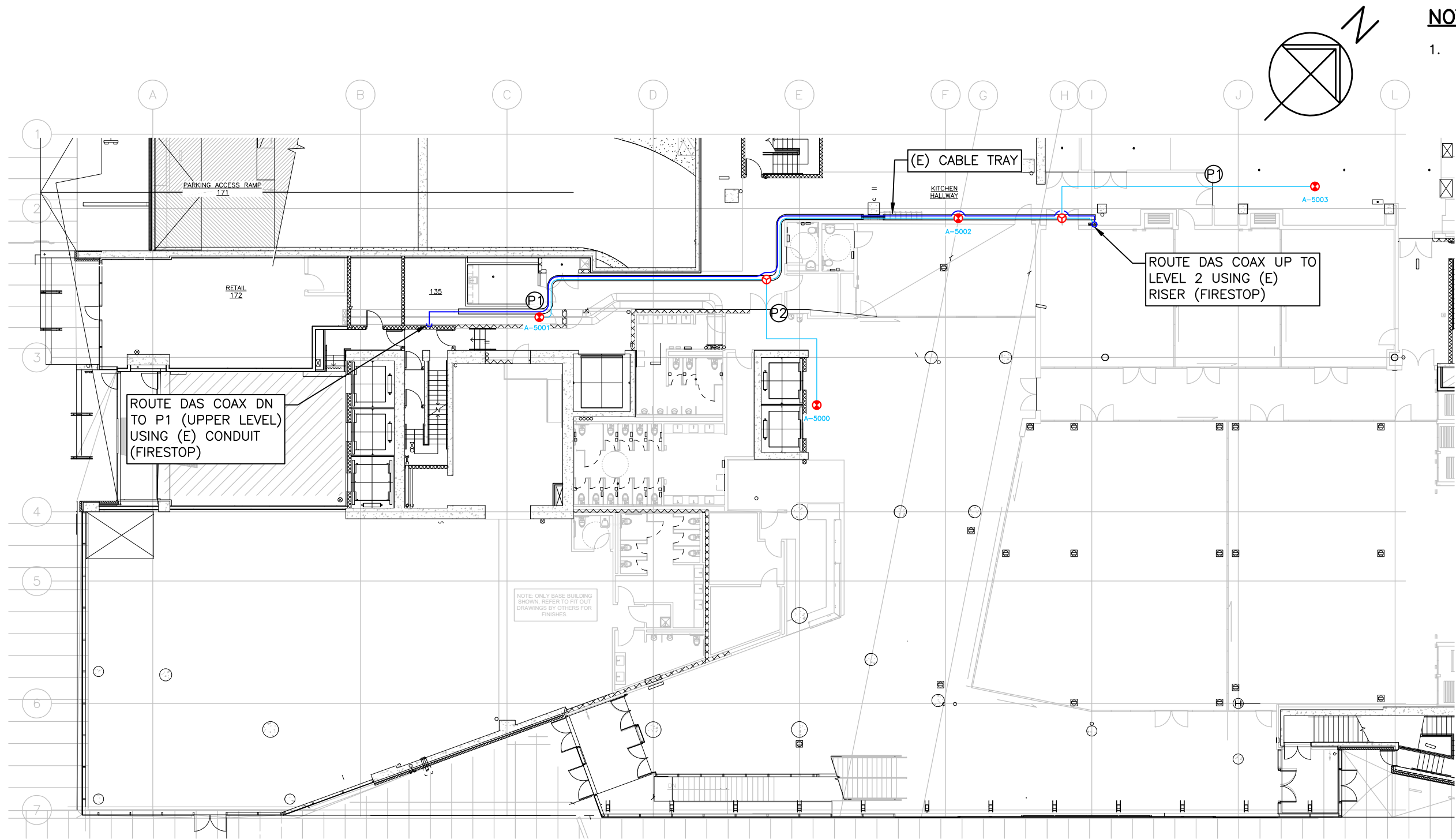
EGBC Permit To Practice: 1003171

Sheet Title:

LEVEL P1
(UPPER LEVEL)

Revisions:	
Date:	DEC 2023
Scale:	1:250
Drawn:	CW
Checked:	CB
Project:	223462
Of	

Drawing:	
E103A	



NOTES:

1. SEE NOTES ON E101.

LEGEND:

- Ⓟ1 - DENOTES EXISTING WALL PENETRATION. REINSTATE FIRESTOP
- Ⓟ2 - DENOTES NEW WALL PENETRATION. FIRESTOP

1 LEVEL 1
- 1:250

	2024.07.19	REVISED PER CITY
	2024.02.07	GENERAL REVISIONS
	2023.12.22	ISSUED FOR 90% COORDINATION
No.:	Date:	Description:

Copyright Reserved.
This plan and design are, and at all times remain the exclusive property of GS Sayers Engineering Ltd. and cannot be used or reproduced without written consent. Written dimensions shall have precedence over scaled dimensions. Contractors shall verify and be responsible for all dimensions and conditions on the job and this office shall be informed of any variations from the dimensions and conditions shown on the drawings.
Sketches may be issued which augment or alter the information presented on this drawing. It is the responsibility of parties using this drawing to ensure that they are in possession of all such sketches.



GS·Sayers
ENGINEERING LTD.

1661 West 5th Avenue
Vancouver, BC V6J 1N5
T: 604.734.8822
F: 604.734.8842
www.glotmansimpson.com

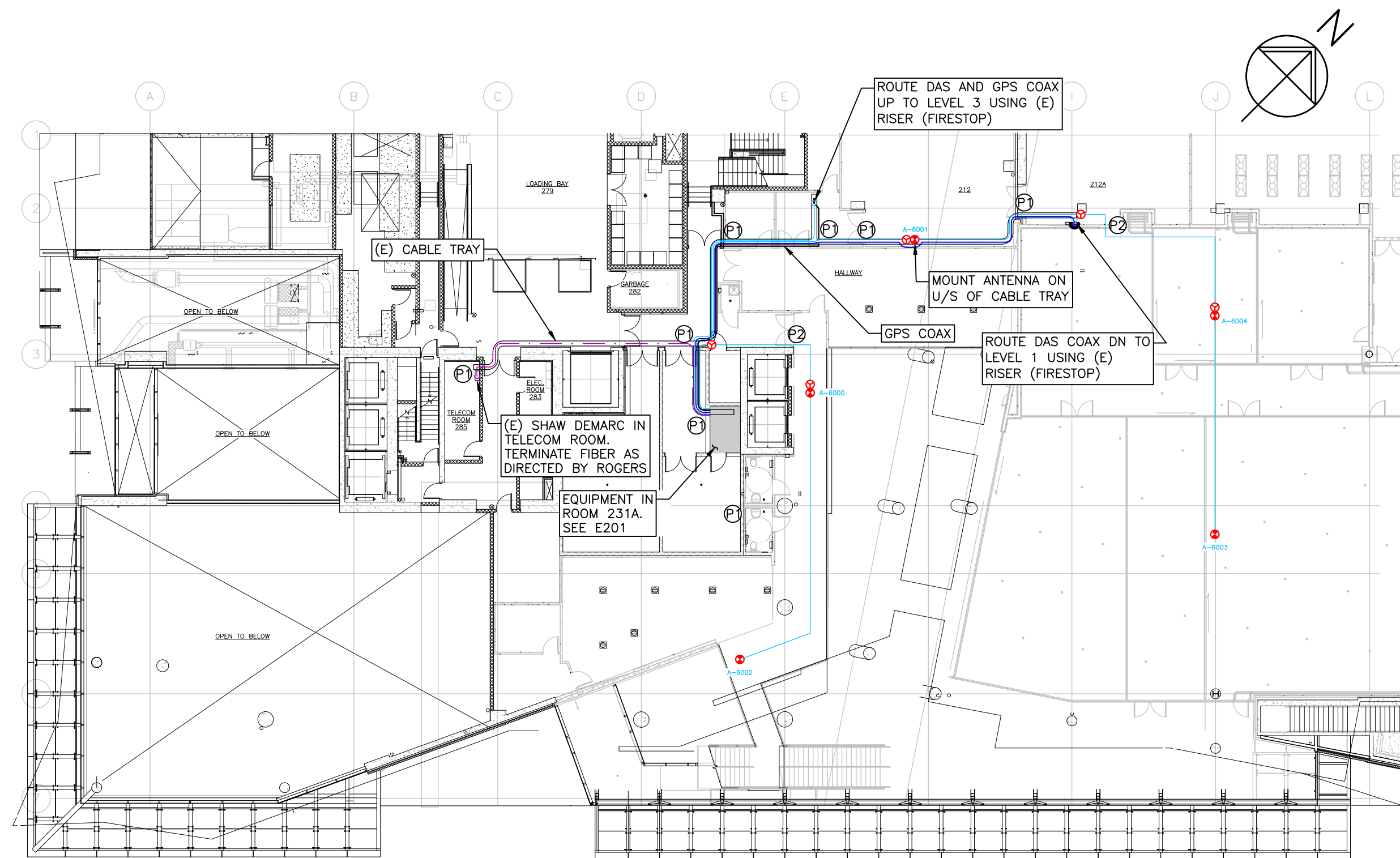
Project: Site ID: **W5994**
ANVIL CENTRE
777 COLUMBIA ST, NEW WESTMINSTER, BC



EGBC Permit To Practice: 1003171

Sheet Title:
LEVEL 1

Revisions:		Drawing: E104
Date:	DEC 2023	
Scale:	1:250	
Drawn:	CW	
Checked:	CB	Of
Project:	223462	



NOTES:

1. SEE NOTES ON E101.

LEGEND:

- Ⓟ - DENOTES EXISTING WALL PENETRATION. REINSTATE FIRESTOP
- Ⓢ - DENOTES NEW WALL PENETRATION. FIRESTOP

1 LEVEL 2
- 1:250

	2024.07.19	REVISED PER CITY
	2024.02.07	GENERAL REVISIONS
	2023.12.22	ISSUED FOR 90% COORDINATION
No.:	Date:	Description:

Copyright Reserved.
This plan and design are, and at all times remain the exclusive property of GS Sayers Engineering Ltd. and cannot be used or reproduced without written consent. Written dimensions shall have precedence over scaled dimensions. Contractors shall verify and be responsible for all dimensions and conditions on the job and this office shall be informed of any variations from the dimensions and conditions shown on the drawings.
Sketches may be issued which augment or alter the information presented on this drawing. It is the responsibility of parties using this drawing to ensure that they are in possession of all such sketches.



GS Sayers
ENGINEERING LTD.

1661 West 5th Avenue
Vancouver, BC V6J 1N5
T: 604.734.8822
F: 604.734.8842
www.glotmansimpson.com

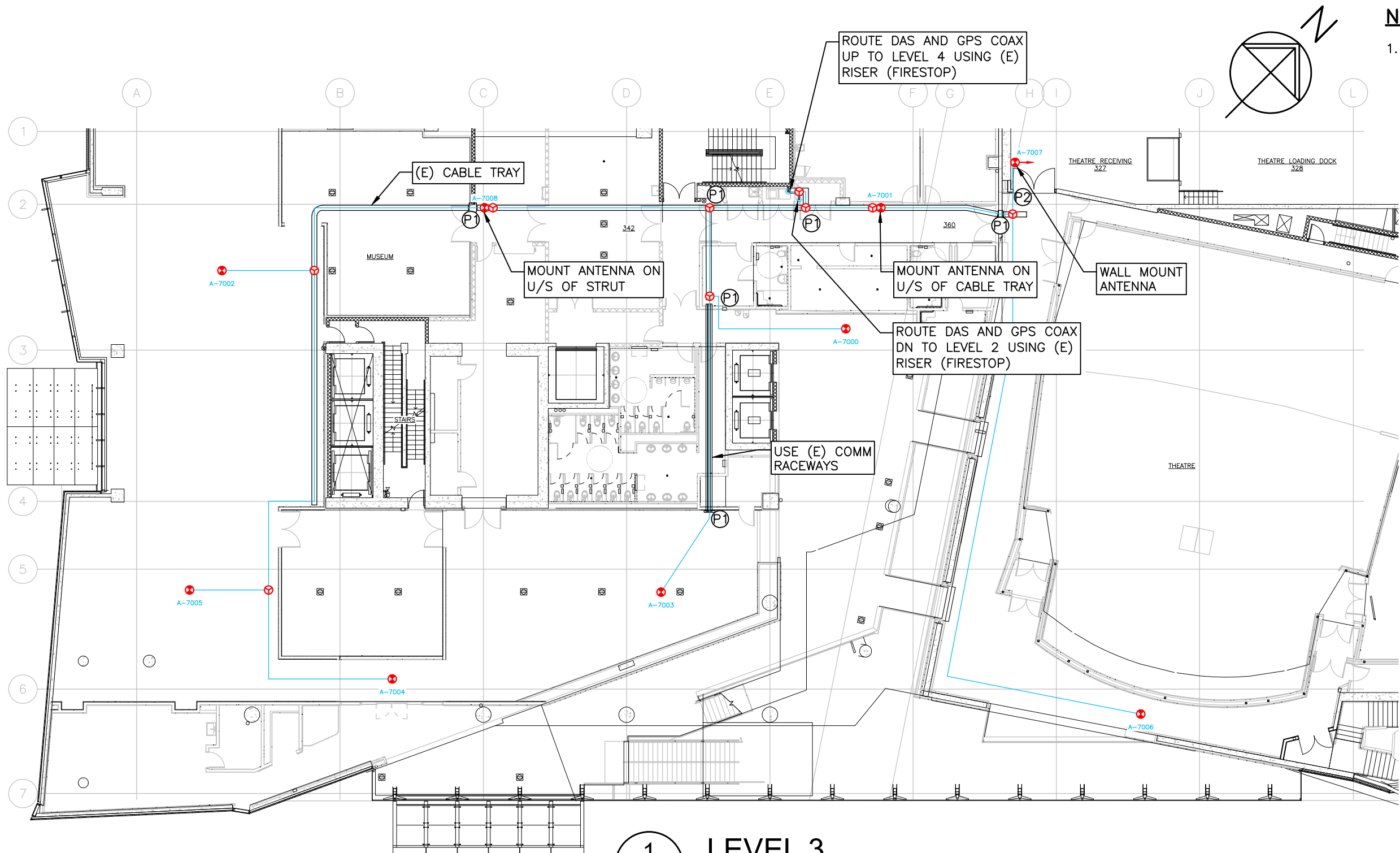
Project: Site ID: **W5994**
ANVIL CENTRE
777 COLUMBIA ST, NEW WESTMINSTER, BC



EGBC Permit To Practice: 1003171

Sheet Title:
LEVEL 2

Revisions:		
Date:	DEC 2023	Drawing: E105
Scale:	1:250	
Drawn:	CW	
Checked:	CB	
Project:	223462	Of



NOTES:

1. SEE NOTES ON E101.

LEGEND:

- Ⓟ1 - DENOTES EXISTING WALL PENETRATION. REINSTATE FIRESTOP
- Ⓟ2 - DENOTES NEW WALL PENETRATION. FIRESTOP

1
-
LEVEL 3
1:250

	2024.07.19	REVISED PER CITY
	2024.02.07	GENERAL REVISIONS
	2023.12.22	ISSUED FOR 90% COORDINATION
No.:	Date:	Description:

Copyright Reserved.
This plan and design are, and at all times remain the exclusive property of GS Sayers Engineering Ltd. and cannot be used or reproduced without written consent. Written dimensions shall have precedence over scaled dimensions. Contractors shall verify and be responsible for all dimensions and conditions on the job and this office shall be informed of any variations from the dimensions and conditions shown on the drawings.
Sketches may be issued which augment or alter the information presented on this drawing. It is the responsibility of parties using this drawing to ensure that they are in possession of all such sketches.



GS Sayers
ENGINEERING LTD.

1661 West 5th Avenue
Vancouver, BC V6J 1N5
T: 604.734.8822
F: 604.734.8842
www.glotmansimpson.com

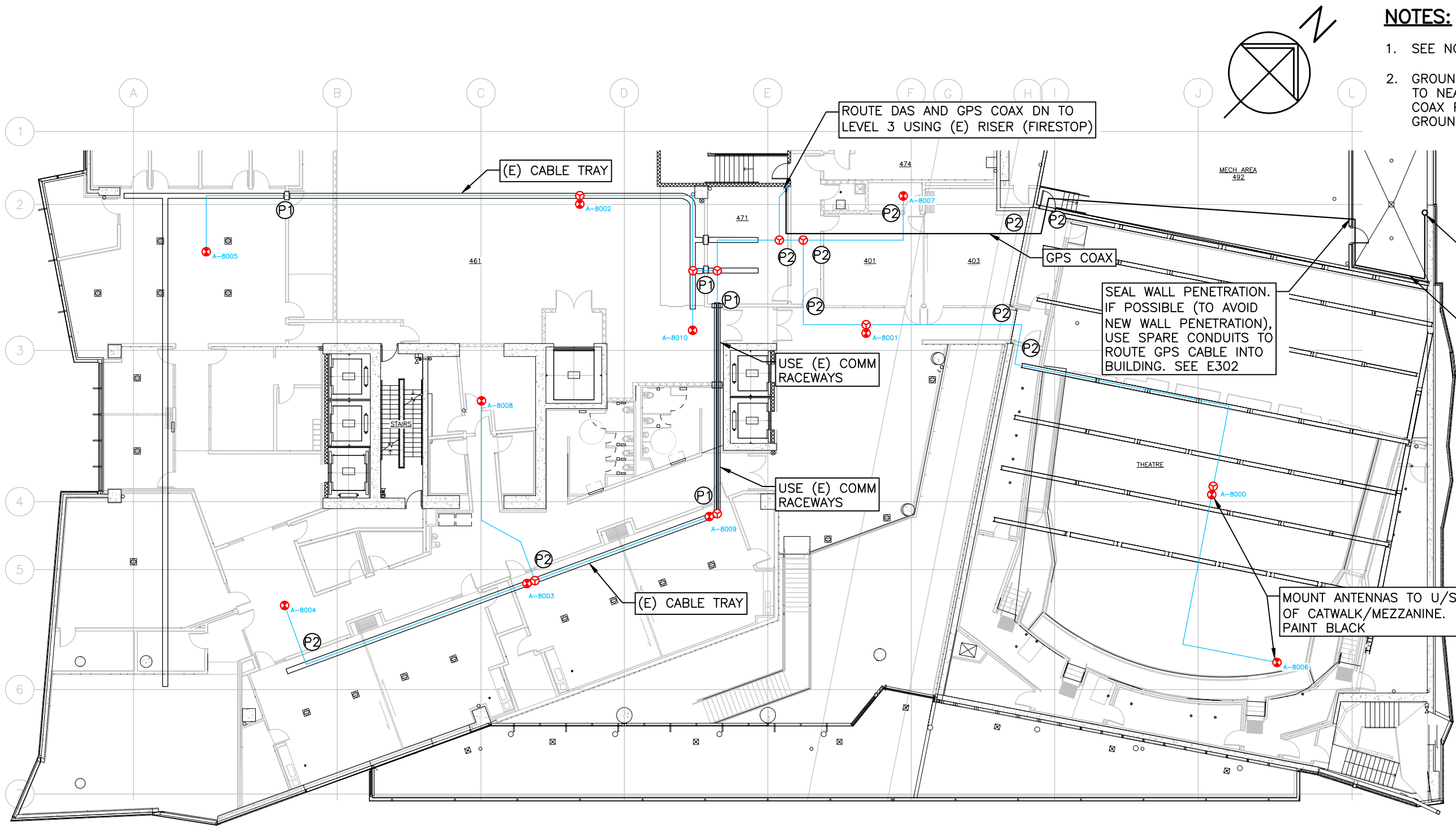
Project: Site ID: **W5994**
ANVIL CENTRE
777 COLUMBIA ST, NEW WESTMINSTER, BC



EGBC Permit To Practice: 1003171

Sheet Title:
LEVEL 3

Revisions:		
Date:	DEC 2023	Drawing: E106
Scale:	1:250	
Drawn:	CW	
Checked:	CB	
Project:	223462	Of



NOTES:

- SEE NOTES ON E101.
- GROUND GPS ANTENNA WITH #6 TW GREEN TO NEAREST GROUND CONDUCTOR. GROUND COAX PRIOR TO BUILDING ENTRY. RUN NEW GROUND CONDUCTOR IF REQUIRED.

LEGEND:

- Ⓟ - DENOTES EXISTING WALL PENETRATION. REINSTATE FIRESTOP
- Ⓟ - DENOTES NEW WALL PENETRATION. FIRESTOP

1 LEVEL 4
- 1:250

	2024.07.19	REVISED PER CITY
	2024.02.07	GENERAL REVISIONS
	2023.12.22	ISSUED FOR 90% COORDINATION
No.:	Date:	Description:

Copyright Reserved.
This plan and design are, and at all times remain the exclusive property of GS Sayers Engineering Ltd. and cannot be used or reproduced without written consent. Written dimensions shall have precedence over scaled dimensions. Contractors shall verify and be responsible for all dimensions and conditions on the job and this office shall be informed of any variations from the dimensions and conditions shown on the drawings.
Sketches may be issued which augment or alter the information presented on this drawing. It is the responsibility of parties using this drawing to ensure that they are in possession of all such sketches.



GS Sayers
ENGINEERING LTD.

1661 West 5th Avenue
Vancouver, BC V6J 1N5
T: 604.734.8822
F: 604.734.8842
www.glotmansimpson.com

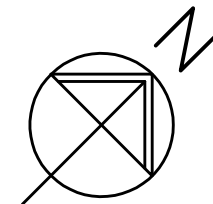
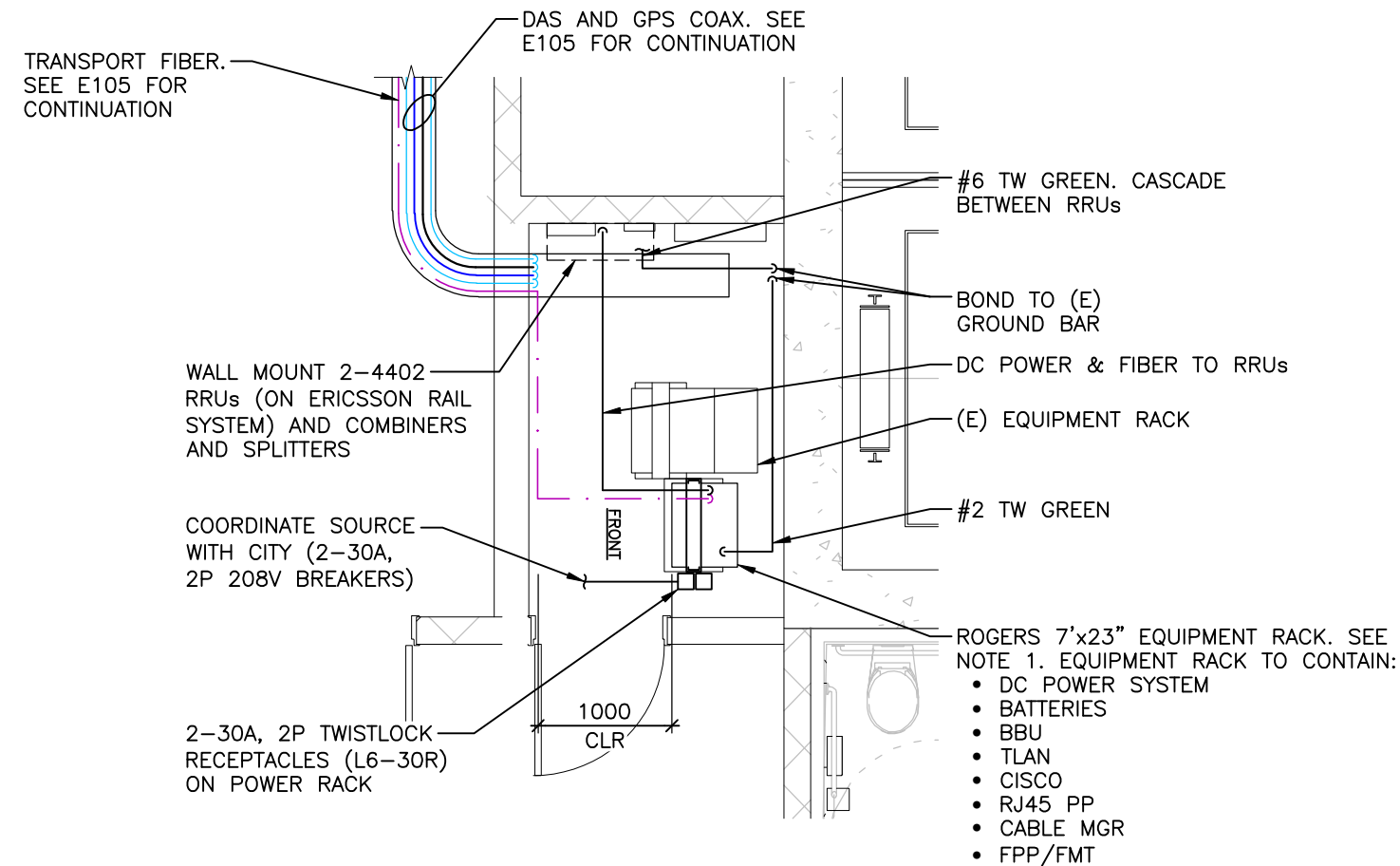
Project: Site ID: **W5994**
ANVIL CENTRE
777 COLUMBIA ST, NEW WESTMINSTER, BC



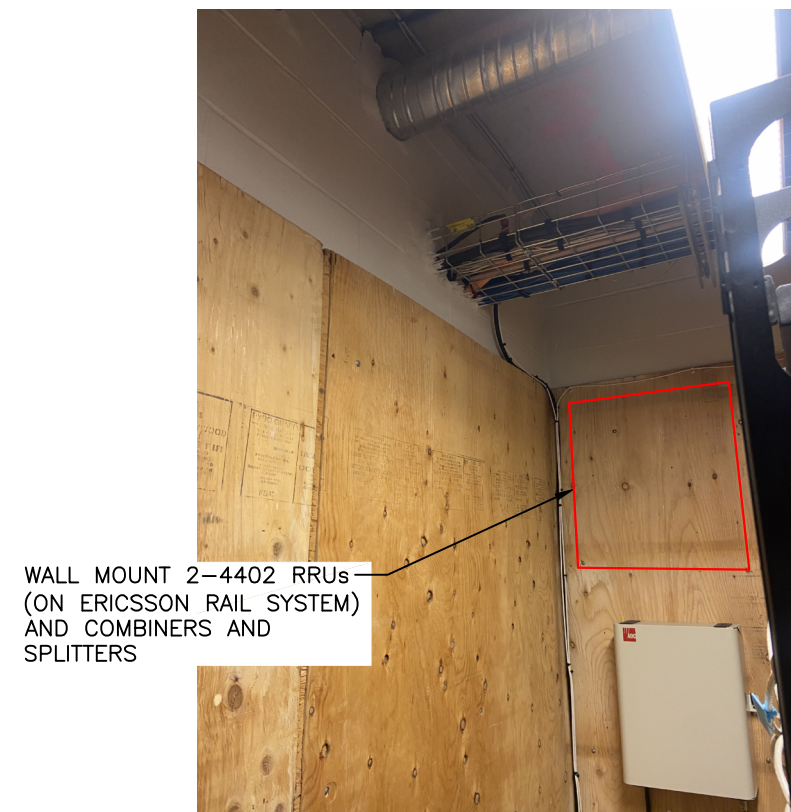
EGBC Permit To Practice: 1003171

Sheet Title:
LEVEL 4

Revisions:		
Date:	DEC 2023	Drawing:
Scale:	1:250	E107
Drawn:	CW	
Checked:	CB	
Project:	223462	Of



- NOTES:**
1. ANCHOR RACK TO FLOOR PER MANUFACTURER'S INSTRUCTIONS AND PROVIDE APPROPRIATE SEISMIC RESTRAINT. SUBMIT SHOP DRAWINGS FOR REVIEW PRIOR TO CONSTRUCTION.



1
E105
EQUIPMENT LAYOUT
1:50
(ROOM 231A)

2
-
RRU LOCATION
NTS

	2024.07.19	REVISED PER CITY
	2024.02.07	GENERAL REVISIONS
	2023.12.22	ISSUED FOR 90% COORDINATION
No.:	Date:	Description:

Copyright Reserved.
This plan and design are, and at all times remain the exclusive property of GS Sayers Engineering Ltd. and cannot be used or reproduced without written consent. Written dimensions shall have precedence over scaled dimensions. Contractors shall verify and be responsible for all dimensions and conditions on the job and this office shall be informed of any variations from the dimensions and conditions shown on the drawings.
Sketches may be issued which augment or alter the information presented on this drawing. It is the responsibility of parties using this drawing to ensure that they are in possession of all such sketches.



GS·Sayers
ENGINEERING LTD.

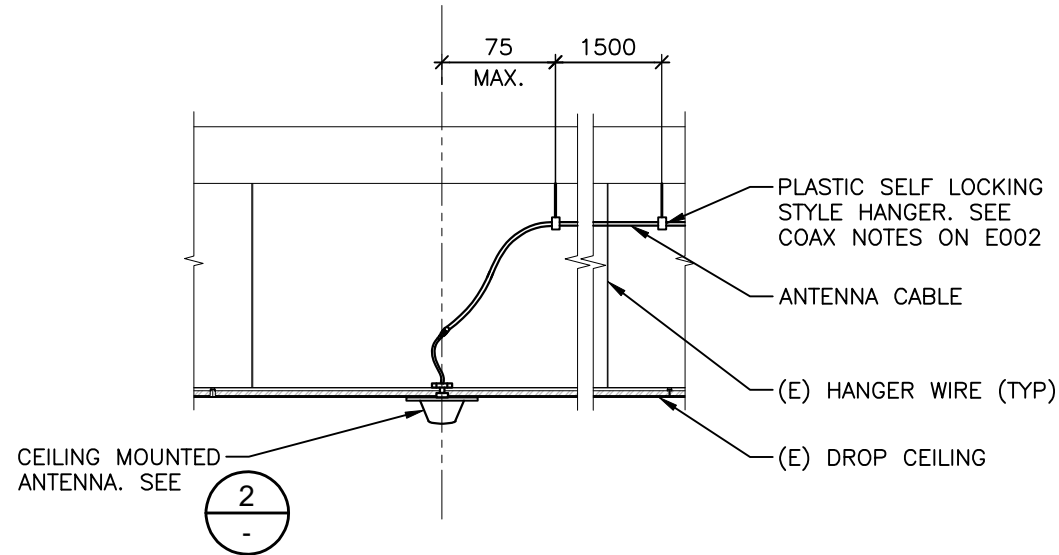
1661 West 5th Avenue
Vancouver, BC V6J 1N5
T: 604.734.8822
F: 604.734.8842
www.glotmansimpson.com

Project: Site ID: **W5994**

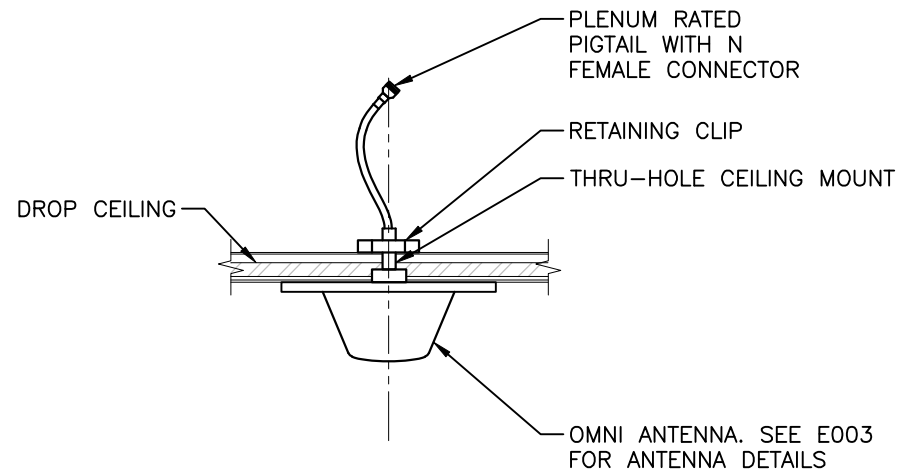
ANVIL CENTRE
777 COLUMBIA ST, NEW WESTMINSTER, BC



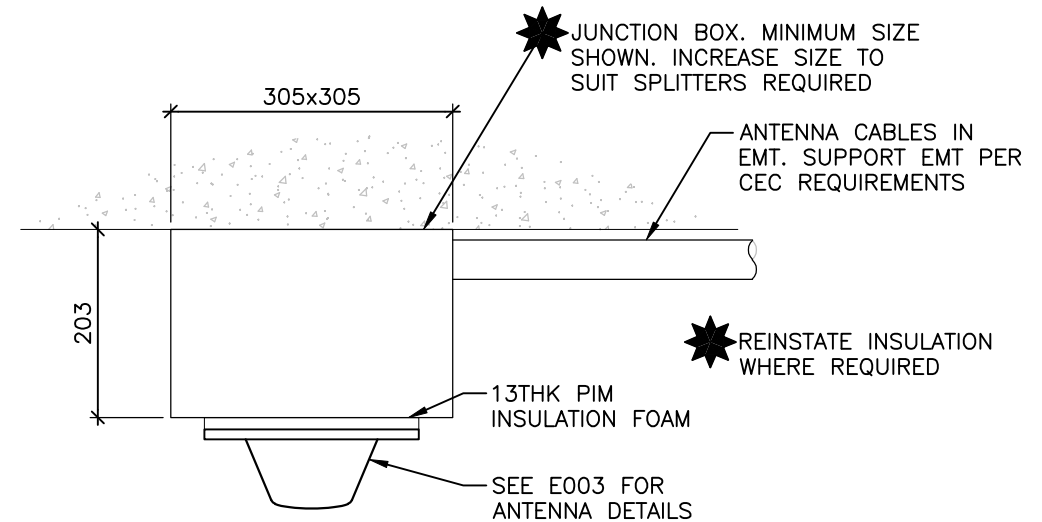
EGBC Permit To Practice: 1003171		Revisions:	
Date:	DEC 2023	Drawing: E201	
Scale:	AS NOTED		
Drawn:	CW		
Checked:	CB		
Project:	223462	Of	



1
-
TYP. ANTENNA MOUNTING DETAIL
NTS (DROP CEILING)



2
-
ANTENNA CONNECTOR DETAIL
NTS



3
-
TYP. ANTENNA MOUNTING DETAIL
NTS (CONCRETE)

	2024.07.19	REVISED PER CITY
	2024.02.07	GENERAL REVISIONS
	2023.12.22	ISSUED FOR 90% COORDINATION
No.:	Date:	Description:

EGBC Permit To Practice: 1003171		Revisions:	
Sheet Title: ANTENNA MOUNTING DETAILS	Date:	DEC 2023	Drawing: E301
	Scale:	NTS	
	Drawn:	CW	
	Checked:	CB	
	Project:	223462	Of

Copyright Reserved.
This plan and design are, and at all times remain the exclusive property of GS Sayers Engineering Ltd. and cannot be used or reproduced without written consent. Written dimensions shall have precedence over scaled dimensions. Contractors shall verify and be responsible for all dimensions and conditions on the job and this office shall be informed of any variations from the dimensions and conditions shown on the drawings.
Sketches may be issued which augment or alter the information presented on this drawing. It is the responsibility of parties using this drawing to ensure that they are in possession of all such sketches.



GS·Sayers
ENGINEERING LTD.

1661 West 5th Avenue
Vancouver, BC V6J 1N5
T: 604.734.8822
F: 604.734.8842
www.glotmansimpson.com

Project: Site ID: **W5994**
ANVIL CENTRE
777 COLUMBIA ST, NEW WESTMINSTER, BC



- NOTES:**
- GROUND GPS ANTENNA WITH #6 TW GREEN TO NEAREST GROUND CONDUCTOR. GROUND COAX PRIOR TO BUILDING ENTRY. RUN NEW GROUND CONDUCTOR IF REQUIRED.



1 GPS ANTENNA VIEW



2 CABLE ENTRY VIEW

	2024.07.19	REVISED PER CITY
	2024.02.07	GENERAL REVISIONS
No.:	Date:	Description:
Revisions:		
Date:	JAN 2024	Drawing:
Scale:	NTS	E302
Drawn:	CW	
Checked:	CB	
Project:	223462	Of

Copyright Reserved.
This plan and design are, and at all times remain the exclusive property of GS Sayers Engineering Ltd. and cannot be used or reproduced without written consent. Written dimensions shall have precedence over scaled dimensions. Contractors shall verify and be responsible for all dimensions and conditions on the job and this office shall be informed of any variations from the dimensions and conditions shown on the drawings.
Sketches may be issued which augment or alter the information presented on this drawing. It is the responsibility of parties using this drawing to ensure that they are in possession of all such sketches.



GS Sayers
ENGINEERING LTD.

1661 West 5th Avenue
Vancouver, BC V6J 1N5
T: 604.734.8822
F: 604.734.8842
www.glotmansimpson.com

Project: Site ID: **W5994**
ANVIL CENTRE
777 COLUMBIA ST, NEW WESTMINSTER, BC



EGBC Permit To Practice: 1003171

Sheet Title:
**GPS ANTENNA
DETAILS**

Date:	JAN 2024	Drawing:
Scale:	NTS	E302
Drawn:	CW	
Checked:	CB	
Project:	223462	Of