



# Options for Accelerating Sidewalks in Queensborough

November 18 – Council Workshop



NEW WESTMINSTER

# Introduction

## Council Motion (May 27, 2024)

THAT Council direct staff to bring back a range of options for Council's consideration to accelerate sidewalk installations in residential areas of Queensborough that are currently underserved and impacted by open ditches.

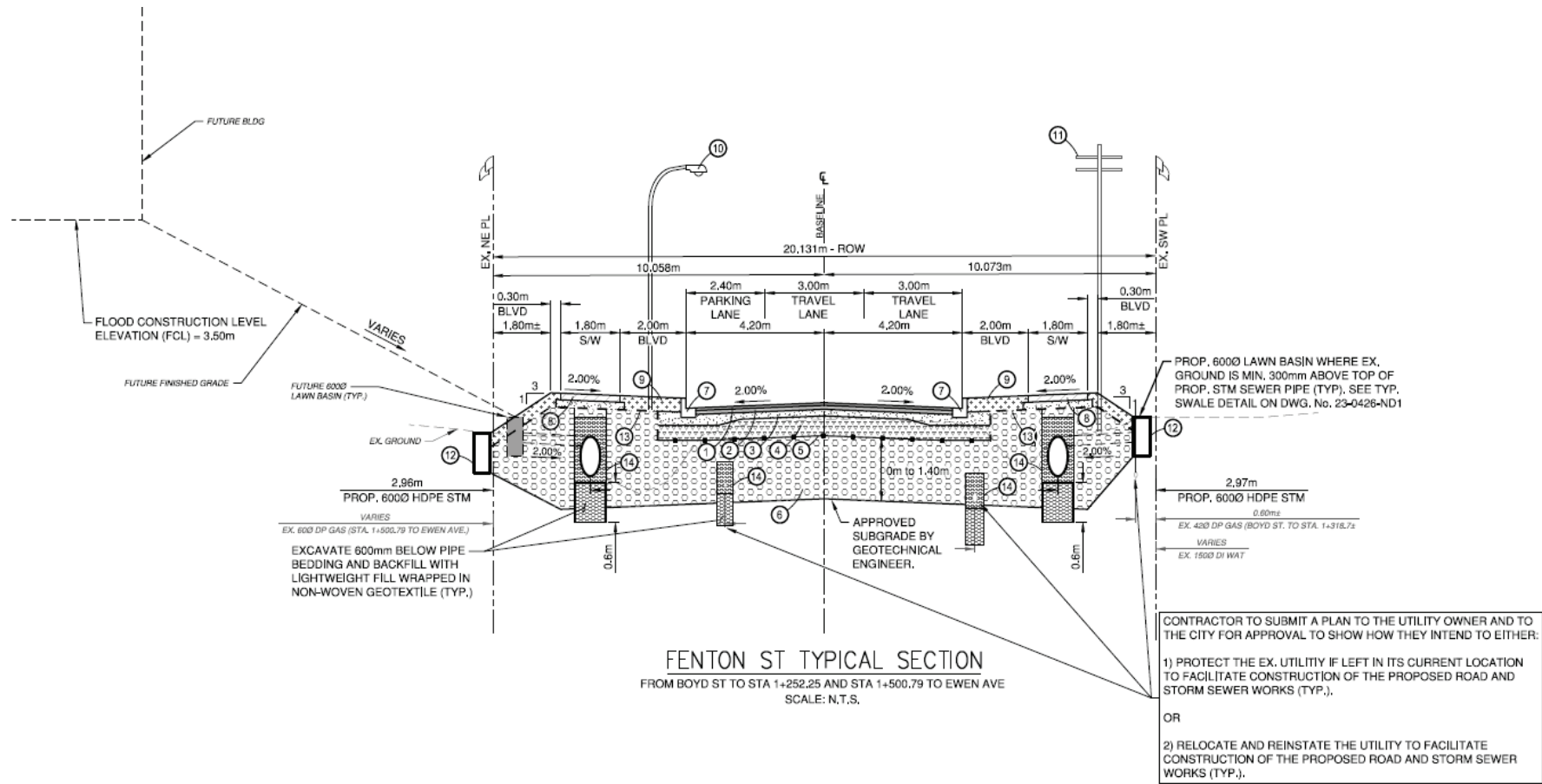
## Purpose of today's workshop:

To respond to Council's motion on the potential options for accelerating the implementation of sidewalks in Queensborough and seek Council feedback based on the completed detailed reference design of Fenton Street.

# Background

- Queensborough Functional Plan for Wood St Catchment (Engineering Report, Parsons, March 1, 2019)
- Queensborough Transportation Plan (Council Report, May 27, 2024)
- Additional information:
  - Queensborough Streetscape Configurations and Cost Estimates (Engineering Report, Associated Engineering, August 22, 2013)
  - Implementation of Ditch Infill and Urban Streetscape in Queensborough (Council Report, September 14, 2015)
  - Ditch Infill and Urban Streetscape in Queensborough Strategies and Community Feedback (Council Report, March 7, 2016)

# Fenton St Streetscape Design Project



Class A Cost Estimate to complete construction of 410 m of Fenton St: \$7.5M (unit cost of \$17,950 per lineal metre).



# Options Maps



## PRIORITY PEDESTRIAN NETWORK GAPS

- - - Pedestrian Gap Location
- - - Pedestrian Gap Location Beside Watercourse

# Options Costs

	Cost
Option 1: Complete Streetscape Rebuild to Mainland Standard	~\$79M
Option 2: Value Engineered to Reduced Standard	\$55-\$63M
Option 3: Complete Streetscape Rebuild Prioritized as per QB Transportation Plan	\$32M
Option 4: Quick-build Treatment	\$1M

# Questions

1. If Council should choose to move ahead with accelerating sidewalk installations in Queensborough, **which option(s)** would Council prefer staff to investigate further and bring back for Council consideration?
2. What is your perspective on funding the complete cost of a preferred option, relative to property owners participating in the Local Area Service Program (LASP), which would require a 50% contribution from residents to the project?
3. What would Council like staff to consider when communicating the suggested next steps to the community?