

Attachment #1

*Massey Complex Land Transfer Agreement
site extents diagram*

**EXPLANATORY PLAN OF PART OF
LOT A DISTRICT LOTS 2055 AND 5678
GROUP 1 NWD PLAN EPP109420**

PLAN EPP112764

BCGS 92G.026
PURSUANT TO SECTION 99(1)(e) OF THE LAND TITLE ACT
FOR THE PURPOSE OF A RESTRICTIVE COVENANT

CITY OF NEW WESTMINSTER



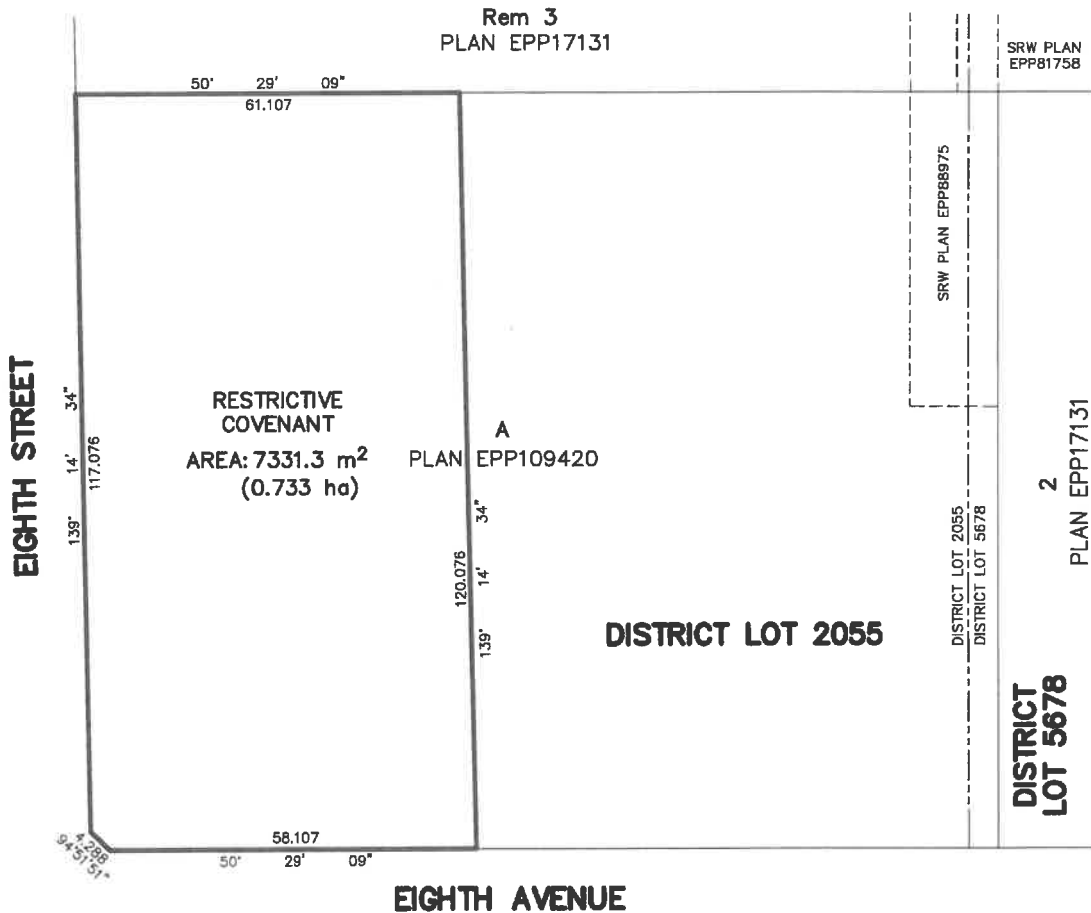
ALL HORIZONTAL GROUND-LEVEL DISTANCES ARE IN METRES.

THE INTENDED PLOT SIZE OF THIS PLAN IS
280mm IN WIDTH BY 432mm IN HEIGHT (B-SIZE)
WHEN PLOTTED AT A SCALE OF 1:750.



LEGEND

m² INDICATES SQUARE METRES
ha INDICATES HECTARES



NOTE:

GRID BEARINGS AND LOT DIMENSIONS ARE DERIVED FROM PLAN EPP109420.

MATSON PECK & TOPLISS
SURVEYORS & ENGINEERS
#320 - 11120 HORSESHOE WAY
RICHMOND, B.C., V7A 5H7
PH: 604-270-9331
FAX: 604-270-4137
CADFILE: 16034-018-SRW-001.DWG

THIS PLAN LIES WITHIN THE METRO VANCOUVER REGIONAL DISTRICT

THIS PLAN IS BASED ON THE FOLLOWING LAND TITLE AND SURVEY AUTHORITY OF BC RECORDS:
PLAN EPP109420

SEBASTIANO LOCONTE, BCLS (#945)
THIS 14TH DAY OF SEPTEMBER, 2021.

NW-21-16034-SRW