



Attachment 3
reGENERATE Ideas Challenge Brief

reGENERATE

An Ideas Challenge for a
climate-friendly neighbourhood

CHALLENGE BRIEF

The City of New Westminster invites
innovators worldwide to help reimagine
the neighbourhood around 22nd Street
SkyTrain Station.



NEW WESTMINSTER



An aerial photograph of New Westminster, British Columbia, showing a dense urban grid, a river, and a bridge. The image is semi-transparent, allowing the text to be overlaid on it.

Land Acknowledgment

We recognise and respect that New Westminster is on the unceded and unsundered land of the Halkomelem (hənqəminəm, Halq'eméylem, Hul'q'umi'num') speaking peoples. We acknowledge that colonialism has made invisible their histories and connections to the land. As a City, we are learning and building relationships with the people whose lands we are on.

Contents

Challenge Purpose	1
Introduction	2
Challenge Framework	6
Challenge Parameters	9
Submission Requirements	10
Evaluation	12



Challenge Purpose

New Westminster is committed to taking bold action on climate, including changing the way we plan for neighbourhoods. We hope you will join us.

reGENERATE invites you to submit ideas about how we can reimagine the neighbourhood around 22nd Street Station to become a climate-friendly neighbourhood where everyone can thrive.

BACKGROUND

The area around the 22nd Street SkyTrain Station is identified in the City's Official Community Plan (OCP) for higher-density development, with good access to transit and amenities. With input from the community, and in collaboration with local First Nations, the City is developing a vision for the future of this neighbourhood. This vision will help set the land use framework to enable growth and change in alignment with community aspirations and priorities.

To support the City's commitment to climate action, the vision will focus on identifying how to create a climate-friendly future. This vision will show how the area can transform into a place where people can live better with the effects of climate change, and to help stop climate effects from getting worse over time. The City is also exploring with local First Nations how the vision for this neighbourhood can advance truth and reconciliation.

To reach a bold vision, we will integrate ideas and direction from local First Nations, City Council, the community, participants from the reGENERATE Ideas Challenge, and technical expertise.

WHY AN IDEAS CHALLENGE?

As we plan for future changes in our neighbourhoods and built environment, we must re-think our typical approaches to ensure bold action on climate change.

There is no "one way" out of the climate crisis. We need all of the perspectives and solutions to tackle this complex challenge. An effective transition to a climate-friendly community requires embracing the full range of human ingenuity and innovation, which includes traditional and new ideas from different communities and cultures.

That's where you come in. We hope that your ideas will push us to be innovative and bold as we develop a vision for a climate-friendly future around 22nd Street Station neighbourhood.



Introduction

ABOUT NEW WESTMINSTER

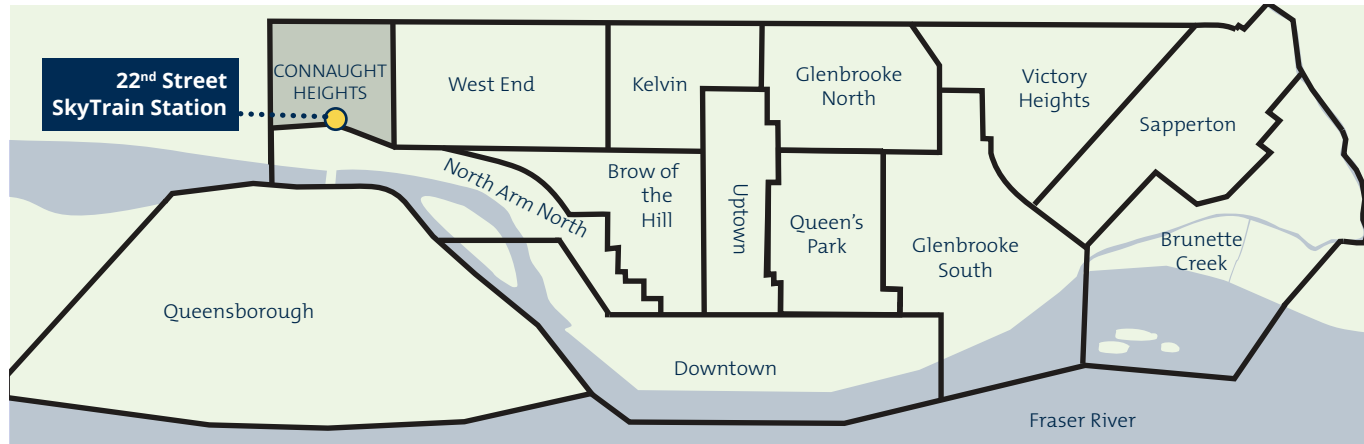
New Westminster is within the traditional territory of the Halkomelem (hənqəminəm, Halq'eméylem, Hul'q'umi'num') speaking peoples. Since the beginnings of time, the Halkomelem speaking peoples have been stewards of these lands, and hold an intimate and ancestral connection to the environment. In the 1800s, colonizers started to occupy the unceded and un-surrendered lands, eventually forcibly removing all Coast Salish communities from the land now known as New Westminster.

Today, New Westminster is a quickly growing municipality in the Lower Mainland where almost half (47%) of residents identify as a visible minority. As the community continues to grow, City staff and Council must consider how to plan for that growth.

The City of New Westminster is located in the heart of Metro Vancouver, bordered by Burnaby, Coquitlam, Surrey and Richmond. The City has many neighbourhoods. 22nd Street SkyTrain Station is located in the Connaught Heights neighbourhood.



Source: Metro Vancouver



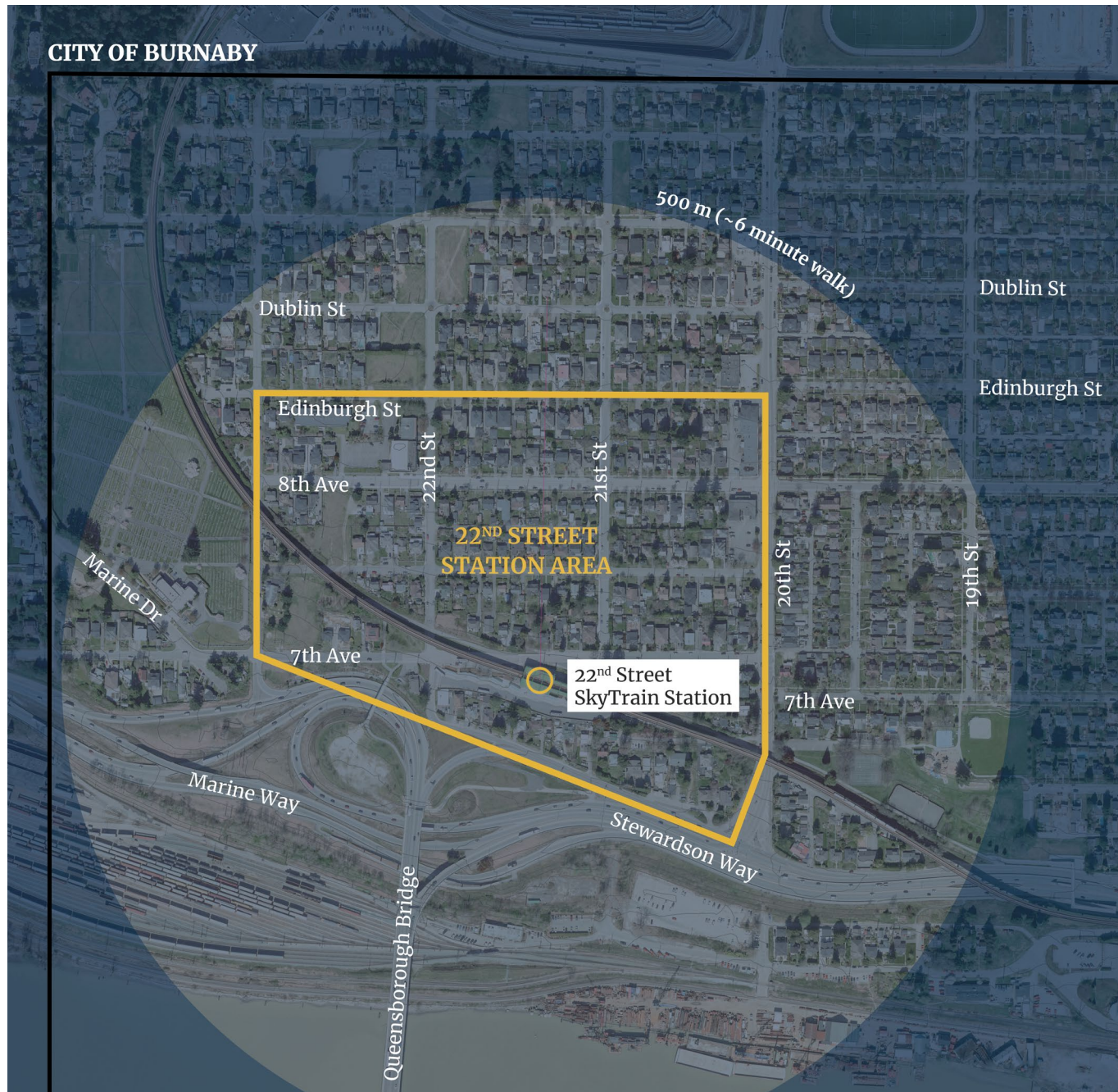
Source: City of New Westminster, 2006 Census Profile

ABOUT THE NEIGHBOURHOOD

22nd Street SkyTrain Station is located in the Connaught Heights neighbourhood, and adjacent to the West End neighbourhood.

Metro Vancouver's Regional Growth Strategy and the City of New Westminster's Official Community Plan identifies 22nd Street Station Area (the Station Area) as a Frequent Transit Development Area (FTDA). This 33 acre area is bounded by Edinburgh Street, 20th Street, and Stewardson Way. Previous planning efforts have focused on this Station Area.

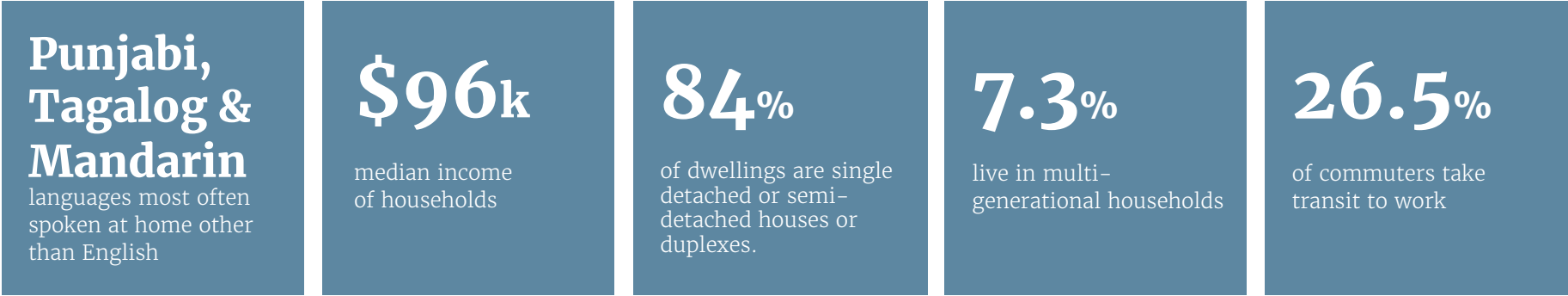
However, as we develop a bold vision, we are revisiting the Station Area boundaries, and are open to exploring with the community ideas for changes outside of this area.



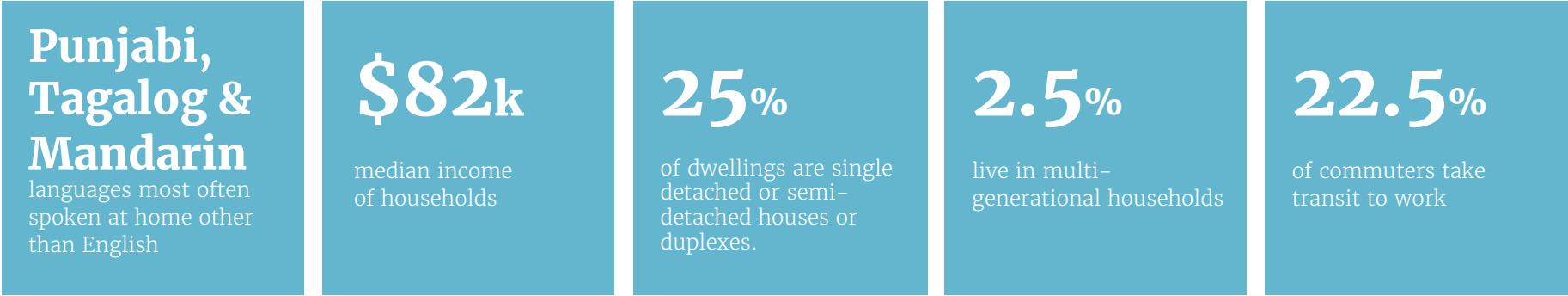
COMMUNITY PROFILE

The following statistics highlight some community characteristics, including the language diversity, income levels, housing types, and commuting patterns in Connaught Heights and New Westminster.

Connaught Heights



City of New Westminster



Data Source: Statistics Canada, 2021 Census Profile.

NEIGHBOURHOOD CHARACTERISTICS

The following physical characteristics of the neighbourhood's streets, topography, lots, and infrastructure impact planning and development.



Views

Southern views of the Fraser River and neighbouring municipalities.



Street Alignment and Congestion

Some streets are misaligned across 20th Street, streets and other rights-of-way meet at different angles. Strong dominance of Stewardson Way, busy intersections, and congestion along 20th Street.



Multiple Jurisdictions

In addition to being on unceded Coast Salish territory, multiple jurisdictions have a presence in the neighbourhood, including the Ministry of Transportation and Infrastructure, TransLink, and BC Hydro. The area is also bordered by the City of Burnaby.



Single-Detached Lots

Current lots are smaller than typical multi-unit lots and predominantly occupied by single-detached houses. The City has very limited ownership of land in the area.



Aging Buildings and Train Station

SkyTrain station opened in 1985. The majority of homes in the station area were built before the 1960s. Some homes in the area may have heritage value.



Steep Slopes

Significant elevation changes to the south leading to development and design challenges and opportunities.

Challenge Framework

The reGENERATE Ideas Challenge is framed by one goal (what we hope to achieve), three foundational values (what we care about) and five themes (how we can reach our goals).

Challenge Framework Summary



FOUNDATIONAL VALUES

Climate Action

In 2019, the City of New Westminster declared a climate emergency and committed to reducing greenhouse gas emissions by 100% by 2050. Climate action will require addressing the causes and impacts of climate change. Climate action can be broken down into “mitigation” and “adaptation”.

Mitigation refers to addressing the cause (e.g. reducing energy and waste, transitioning to a low-carbon community, etc.), and adaptation refers to addressing the impacts (e.g. disaster preparedness, restoration of natural areas, preparing for extreme weather, protecting against sea level rise, etc.). Many climate action methods help with both mitigation and adaptation. Building community resilience is also a key strategy for climate action.

The City of New Westminster hopes that the vision for the neighbourhood around 22nd Street SkyTrain Station will push the envelope on how we design climate-friendly neighbourhoods.

Truth and Reconciliation

New Westminster is within the traditional territory of the Halkomelem (hənqəminəm, Halq'eméylem, Hul'q'umi'num') speaking peoples. Since the beginnings of time, the Halkomelem speaking peoples have been stewards of these lands, and hold an intimate and ancestral connection to the environment.

The City of New Westminster acknowledges that, for over 150 years, colonization has harmfully exploited Indigenous peoples and the lands—and the extractive practices of colonization continues to contribute to the climate crisis. Indigenous peoples have deep knowledge and understanding of how to live on these lands in a good way. We cannot effectively respond to the climate emergency without building reciprocal and respectful relationships with Indigenous communities, honouring and learning from Indigenous ways of knowing and climate leadership, celebrating Coast Salish culture, and making reparations for past harms.

The City of New Westminster hopes to build stronger respectful relationships with the local First Nation communities throughout this process, exploring what reconciliation and climate action could look like in this neighbourhood.

Equity, Diversity, Inclusion

Historically and today, many communities face inequitable access (based on race, age, gender, sexual orientation, immigration status, religion or disability, etc.) to important things like suitable housing, good health, adequate income, and the ability to move around easily.

The City of New Westminster is a dynamic community, rich in diversity. This diversity is a strength, and the City is committed to leveraging unique insights from diverse perspectives to foster an equitable, inclusive, and welcoming community.

The City of New Westminster hopes that the future 22nd Street Station area will reflect the city's diversity and acknowledge and respond to the needs of everyone, providing a better community for all.



Artist: Christina Coolidge
yearoftruth.ca

Bringing it all together

Indigenous and equity-denied communities are often disproportionately impacted by climate change, experiencing property damage, cost impacts, and/or health challenges from extreme weather events. Many of these communities are not just experiencing the impacts of climate change, but are also actively addressing climate challenges.

Climate-friendly communities must be accessible to a diverse range of community members – these need to be places where everyone can thrive. Taking action on climate needs to include being proactive on equity and inclusion, giving careful consideration to how different approaches or ideas would be experienced by equity-denied community members.

There is no “one way” out of the climate crisis. We need all of the perspectives and solutions that we have to tackle this complex challenge. An effective transition to a climate-friendly community requires embracing the full range of human ingenuity and innovation, which includes traditional and new ideas from different communities and cultures.

THEMES

As we plan for the future of 22nd Street Station Area and beyond, we are considering the following key themes. These are the ‘levers’ that the City can use to reach the project goal.



Land Use & Housing

For example, growth near transit, diverse and affordable housing.



Mobility, Access & Infrastructure

For example, sustainable transportation and infrastructure improvements.



Landscape & Water

For example, nature-based solutions, connected open space, sustainable food-systems.



Buildings, Energy and Waste

For example, zero emission buildings, energy efficiency and conservation, embodied energy, local renewable energy, construction waste reduction, and circular economy opportunities.



Community Connections and Belonging

For example, community well-being, sense of place and safety, celebrating culture, Coast Salish cultural revitalization.



Challenge Parameters

Your submission should respond to the Challenge Goal, reflecting on one or more of the Foundational Values, and can focus on one or more of the Themes.

EVALUATION CRITERIA

The jury will consider the following criteria when evaluating the submissions.

- **Adherence:** Does the submission adhere to the challenge parameters and submission requirements?
- **Creativity & Innovation:** How creative and innovative is the idea? Does it inspire us to approach things differently, use creative or new methods?
- **Relevance to Local Context:** How appropriate is the idea to the specifics of the local context of the neighbourhood around the 22nd Street SkyTrain Station, Connaught Heights Neighbourhood, and the City of New Westminster? How feasible is implementation of the solution?
- **Values Aligned:** How does the idea address one or more of the “foundational values” of Climate Action, Truth and Reconciliation, and Equity, Diversity, and Inclusion to help enable the City of New Westminster to catalyze change towards a climate-friendly neighbourhood?
- **Communication & Clarity:** How compelling is the narrative, presentation, and description of the idea?

ELIGIBILITY AND AWARDS

Entry is open to everyone – community members, students, designers, urban development professionals — from New Westminster and anywhere else in the world. There are no professional or education qualifications required.

PRIZES AND INCENTIVES

- **Top Comprehensive Idea (\$5,000)** | The winning idea from all submissions received will provide a comprehensive concept for the area, considering multiple challenge themes (i.e. landscape, land use, mobility, etc). These ideas must be at the Station Area or Neighbourhood scale.
- **Top Local Community Idea (\$2,000)** | The top idea from a New Westminster resident or team of residents. This idea may not address all of the challenge themes but it ranks well against the evaluation criteria.
- **Community’s Choice Award (\$1,500)** | The public will be invited to vote online on a shortlist of the submissions, to provide an opportunity to celebrate the idea that resonates most with the New Westminster community.
- **Top Youth Idea (\$500)** | The top idea from any individual or team aged up to 30 years old. This idea may not address all of the challenge themes, but ranks well against the evaluation criteria.
- **Honourable Mentions (\$200)** | Additional compelling ideas that we want to celebrate and acknowledge.

Submissions will be celebrated at a public event in the spring of 2024. Winning ideas and teams will also be profiled on the City’s project page, and receive coverage in social media and press releases. Winning individuals or teams may also be invited to participate in a design charrette to help weave the great ideas, community priorities, and technical considerations together into a bold vision for the neighbourhood.

We look forward to reviewing and considering all idea submissions. A jury will select winning ideas and honourable mentions, and the community will determine the Community’s Choice Award. There is also potential for many submissions to inform what ultimately becomes the neighbourhood vision.

REGISTRATION

To register online, visit the project website at www.newwestcity.ca/regenerate

Submission Requirements

SUBMISSION SCALES

Submissions are invited at different scales:

- **Site-specific:** For example, ideas for one parcel, building, block, pathway, or street.
- **22nd Street Station Area:** For example, an integrated concept for the 22nd Street Station Area.
- **Neighbourhood |** For example, ideas and integrated concepts that go beyond the Station Area, connecting into the surrounding Connaught Heights or West End community. In your submission, you can determine the boundaries of this neighbourhood scale.

SUBMISSION DETAILS

Submissions must be digital. Up to 4 boards may be submitted. Boards may include text, diagrams, photographs, maps, etc. Each group or individual can determine what information is needed to communicate the merits of their idea(s). Boards should be accompanied by a written description to a maximum of 1,000 words.

Board submissions must:

- Not exceed 4 pages
- Be 24”x36” in size and in landscape orientation
- File format: PDF
- File Size Maximum: 30MB (total for 4 boards)
- Visual Resolution: 150 DPI or higher
- .ZIP files accepted

Written descriptions must:

- Include a maximum 1,000 word count
- Describe the idea and how it meets the evaluation criteria
- Include name and title of project
- Not include forms of personal or professional identification

OWNERSHIP AND COPYRIGHT OF IDEAS/ SUBMISSIONS

By submitting an idea, participants in the Ideas Challenge agree that the Intellectual Property can be used free of charge by the City as part of the planning of the 22nd Street Station area/Connaught Heights neighbourhood and for the public promotion of the same. Intellectual Property shall be acknowledged and attributed to the named participant(s) wherever possible.

For additional disclaimers and information, see the registration form online: www.newwestcity.ca/regenerate

Submission Tip!

For your big bold idea, consider:

- What is your idea?
- What is the intended impact?
- Why is it needed?
- How is it innovative and/or ambitious?
- What challenge does it address?
- Why is it a good fit?
- What would be needed to make it happen?

TIPS FOR CREATING POSTER BOARDS

You can make the poster boards digitally or through analog tools.

The Digital Way

Make your poster board(s) on your computer. Some tools you can use to make poster boards include:

- Adobe InDesign
- Adobe Illustrator
- PowerPoint
- Google Slides
- Canva (canva.com)

Just remember to adjust the document size to be 24" by 36" in landscape orientation.

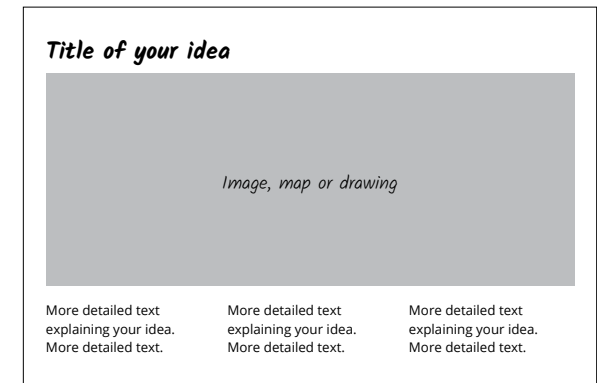
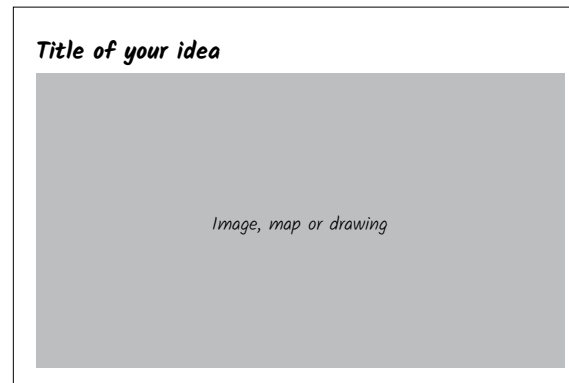
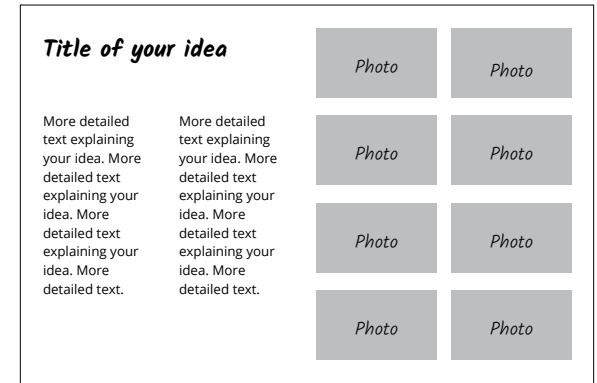
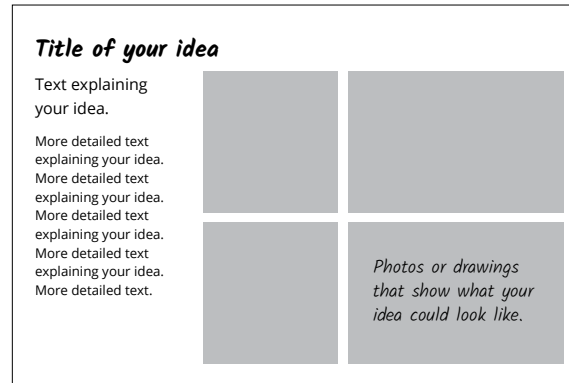
The Analog Way

You can also create a physical poster!

- Find a 24" x 36" poster board or piece of paper
- Showcase your idea through drawings, collages, or other analog ways.
- Take a photo and save it as a PDF. You may need to resize the PDF to be 24x36".

Layout Examples

Here are some examples of how you could balance text and images on the poster(s)



Evaluation

JURY

The jury will review a shortlist of submissions and choose the winning ideas based on the evaluation criteria.

The jury will include local representation as well as professionals and academics with experience in climate change policy, neighbourhood design, community planning, and Indigenous planning. First Nation representatives have also been invited to participate on the jury.

TECHNICAL COMMITTEE

The technical committee will help organize submissions to be evaluated by the Jury and make comments of a technical nature on the ideas. This committee will provide a shortlist of submissions for the jury, and for the Community's Choice Award, removing any applications that do not adhere to the submission requirements.

Once the reGENERATE Ideas Challenge closes, the technical committee will work to weave together the submitted ideas into a bold vision for the neighbourhood.

The technical committee is comprised of the consultant project team and City of New Westminster staff.

CHALLENGE SCHEDULE

- **Registration Opens:** November 20, 2023
- **Registration Closes:** January 15, 2024
- **Submission Deadline:** January 31, 2024
- **Community's Choice Award Voting:** February, 2024
- **Winners Announced:** Spring 2024




NEW WESTMINSTER