



Attachment # 1

**Memorandum from TiCorp dated
December 11, 2023**



Memorandum

To:	Mayor and Council City of New Westminster	Date:	December 11, 2023
From:	Wendy Itagawa, P.Eng. Executive Project Director	Cc:	Lisa Spitale, Chief Administrative Officer Lisa Leblanc, Director of Engineering
Subject:	Pattullo Bridge Replacement Project: 2024 construction works and associated traffic impacts		

This memo is a follow up to the project update provided to New Westminster City Council on September 11, 2023. As construction continues to progress on the Pattullo Bridge Replacement Project, more traffic pattern changes are planned in New Westminster. These changes will support ongoing construction of the connecting roadways as well as the bridge infrastructure.

This memo outlines the traffic pattern changes anticipated in 2024.



1. Royal Avenue utility and drainage work – ongoing through early 2024

The Royal Avenue overpass rehabilitation is mostly complete. Lane closures will continue through early 2024 as crews complete utility relocations and drainage work in the area. This work will be complete

before the first Front Street closure in January. Final paving along Royal Avenue will be completed at a later date.

2. E. Columbia Street / McBride Boulevard intersection improvements: ongoing through spring 2024

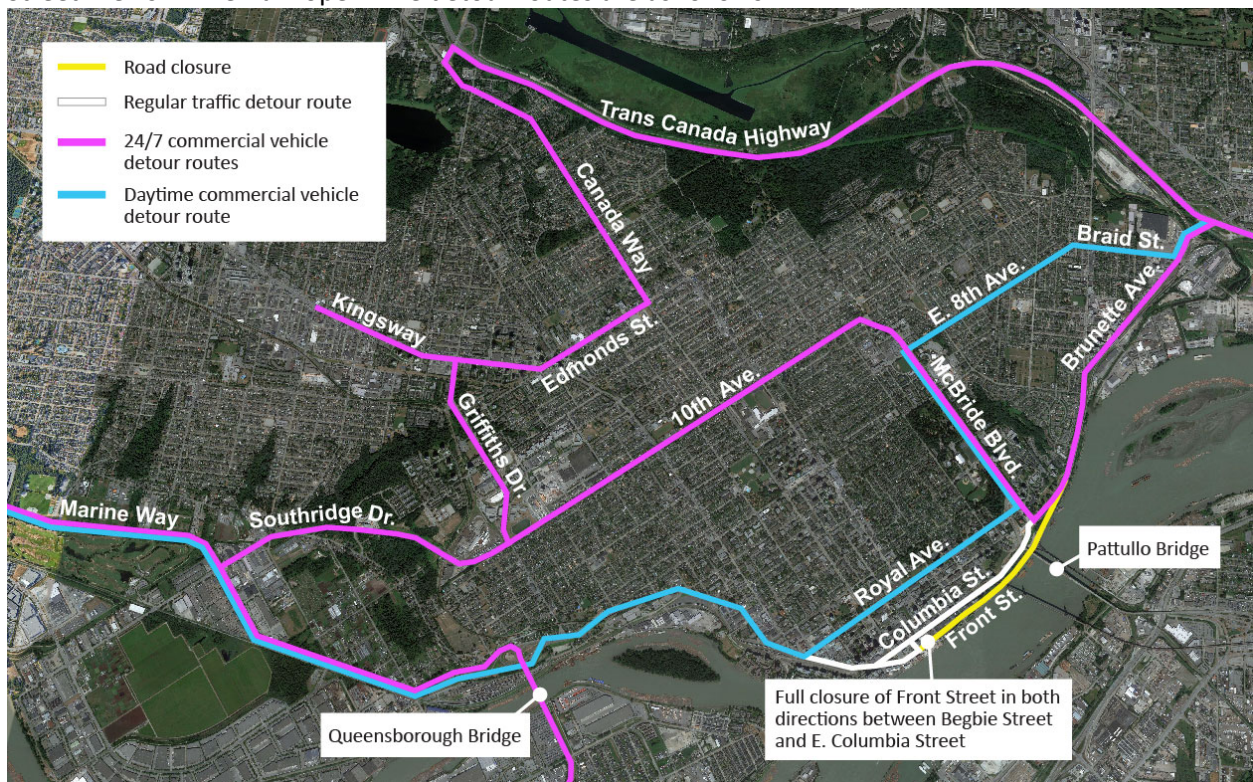
The McBride and East Columbia intersection requires modification to improve safety for walkers, cyclists and drivers, and to accommodate the new direct East Columbia off-ramp from the new bridge. Construction of the rehabilitated heritage wall is mostly complete. Intersection regrading work will take place in spring 2024, which will require directional lane closures on Columbia Street over one weekend. As traffic will be detoured to Front Street, this work will take place when Front Street is open.

3. Front Street / Columbia Street closures for girder installation and bridge deck construction – January through August 2024

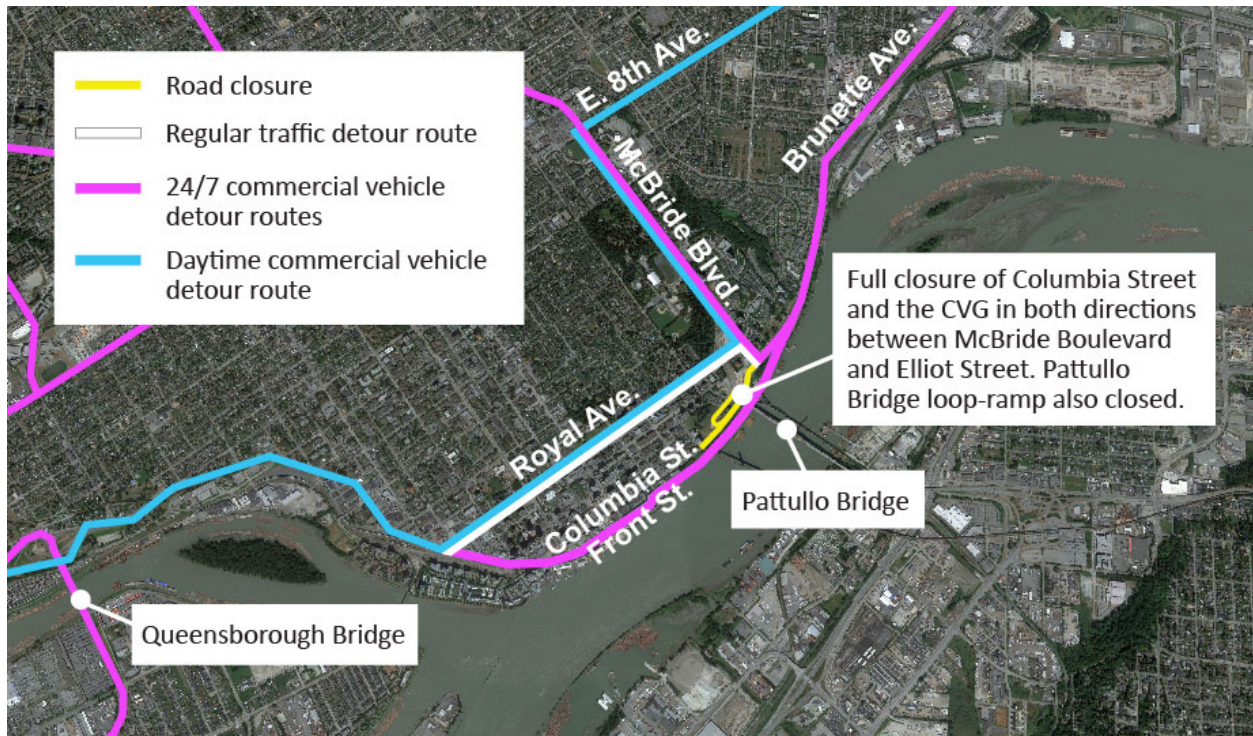
Starting in January 2024, the project will implement sequential full road closures on Front Street and Columbia Street near the Pattullo Bridge for crews to install steel girders and build the new bridge deck. Front and Columbia will not be closed at the same time.

Full road closures are required for public and construction worker safety during girder delivery, temporary tower construction set-up, and girder installation over these roads. Full-day closures will result in a shorter construction timeline overall and minimize noise impacts associated with nighttime work.

The first Front Street closure will take place starting in late January for approximately one month. Front Street Mews will remain open. The detour routes are as follows:



A closure of Columbia Street will take place in late February for approximately one month. The detour routes are noted in the map below. Cyclist and pedestrian detours will be further developed in consultation with active transportation groups.



Additional Front Street closures will be required, including a six-month closure for temporary tower construction and to complete the girder installation and bridge deck construction over Front Street. The Project team will provide more information in early 2024 outlining specific timing for additional closures.

Based on previous experience of road closures on Front and Columbia, the Project team will implement the following mitigation measures to minimize the impacts to local residents, businesses and general public using these corridors:

- **Portable dynamic message signs and static signs** will inform drivers of upcoming traffic pattern changes. The signs would be placed on key corridors approaching the work zone.
- **The City of New Westminster’s digital advertising signs** will be used to display information about the Columbia and Front Street closures, so drivers can plan ahead and use alternate routes.
- **The Ministry of Transportation’s Dynamic Message Signs** on Highway 1 will be used at select locations so traffic is notified early about which road is closed, so drivers could avoid the area and use alternate routes.
- **Traffic Control Personnel** will be deployed to assist with directing traffic, enforcing truck restrictions, and assisting pedestrian and cyclist movement at key locations.
- **Monitoring key local roads** will ensure that traffic detours will not have adverse impacts to local neighbourhoods.

Ongoing Communications and Engagement

The Project team recognizes that regular, proactive communications will be critical to ensure the travelling public, commercial vehicle operators, and local businesses and residents are aware of upcoming road closures.

The Project team continues to communicate construction and traffic information via the Project website and social media, local resident and business meetings, emailed bulletins, road signage for vehicles, pedestrians and cyclists, and traffic media advisories.

A robust communications and engagement program is in place to support the upcoming Front Street and Columbia Street closures. This includes:

- **E-mailing notifications** to approximately 1,200 people who have signed up via pattullobridgereplacement.ca to receive project updates, as well as directly to resident, business and stakeholder groups in New Westminster
- **Mailing / door-to-door delivery** of notifications to nearby residents
- Ongoing **regular meetings with local residents' associations** (Eagle Crest Advisory Committee, Victoria Hill & Ginger Drive Residents' Association)
- Providing **regular updates to other residents' associations**, and offering a project update meeting for those interested
- Regular **outreach to active transportation groups**, including offering a project update meeting to review and hear feedback on detour routes for the Columbia Street closure
- Regular **outreach to local schools**
- Ongoing **regular meetings with, and email notifications to, the Project's Traffic Advisory Committee**, which includes representatives from the cities of New Westminster and Surrey, first responders, BC Trucking Association, TransLink, Coast Mountain Bus, Metro Vancouver, and the Vancouver Fraser Port Authority
- **Meetings with the Downtown New Westminster BIA**
- **Door-to-door visits with businesses** along Columbia Street and Front Street
- **Outreach to the commercial vehicle industry** and other transportation associations; mail-outs to industrial areas that rely on trucks
- **Social media campaigns and Project website updates**; work with key stakeholders and organizations to leverage reach through social media
- **Traffic media advisories** to Metro Vancouver traffic media
- **Engagement "pop-ups" at community events**, to provide project information

Public questions can be directed to the Project's 24/7 phone line, [1-844-815-6149](tel:1-844-815-6149), or email address info@fcgp.ca.