

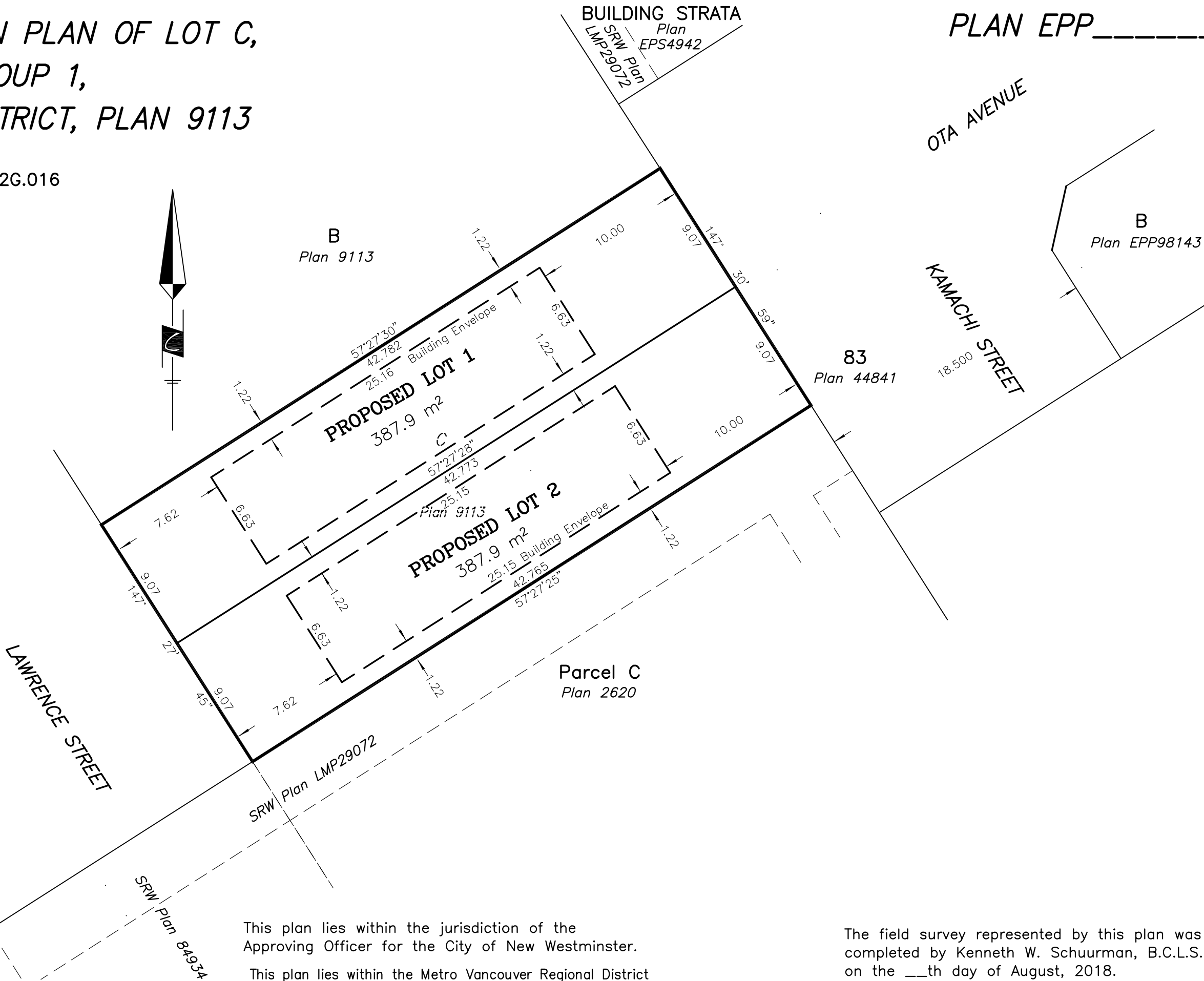
Attachment 2  
*Proposed Subdivision Plan*

PROPOSED SUBDIVISION PLAN OF LOT C,  
DISTRICT LOT 757, GROUP 1,  
NEW WESTMINSTER DISTRICT, PLAN 9113

City of New Westminster BCGS 92G.016



SCALE — 1 : 250  
All distances are in metres



Cameron Land Surveying Ltd.  
B.C. Land Surveyors  
Unit 206, 16055 Fraser Highway  
Surrey, B.C. V4N 0G2  
Phone: 604-597-3777  
File: 6791-SUB2

This plan lies within the jurisdiction of the  
Approving Officer for the City of New Westminster.  
This plan lies within the Metro Vancouver Regional District

The field survey represented by this plan was  
completed by Kenneth W. Schuurman, B.C.L.S.  
on the \_\_\_th day of August, 2018.