

Attachment # 3

Metro Vancouver Project Presentation



Glenbrook

Glenbrook Combined Sewer Overflow Chamber

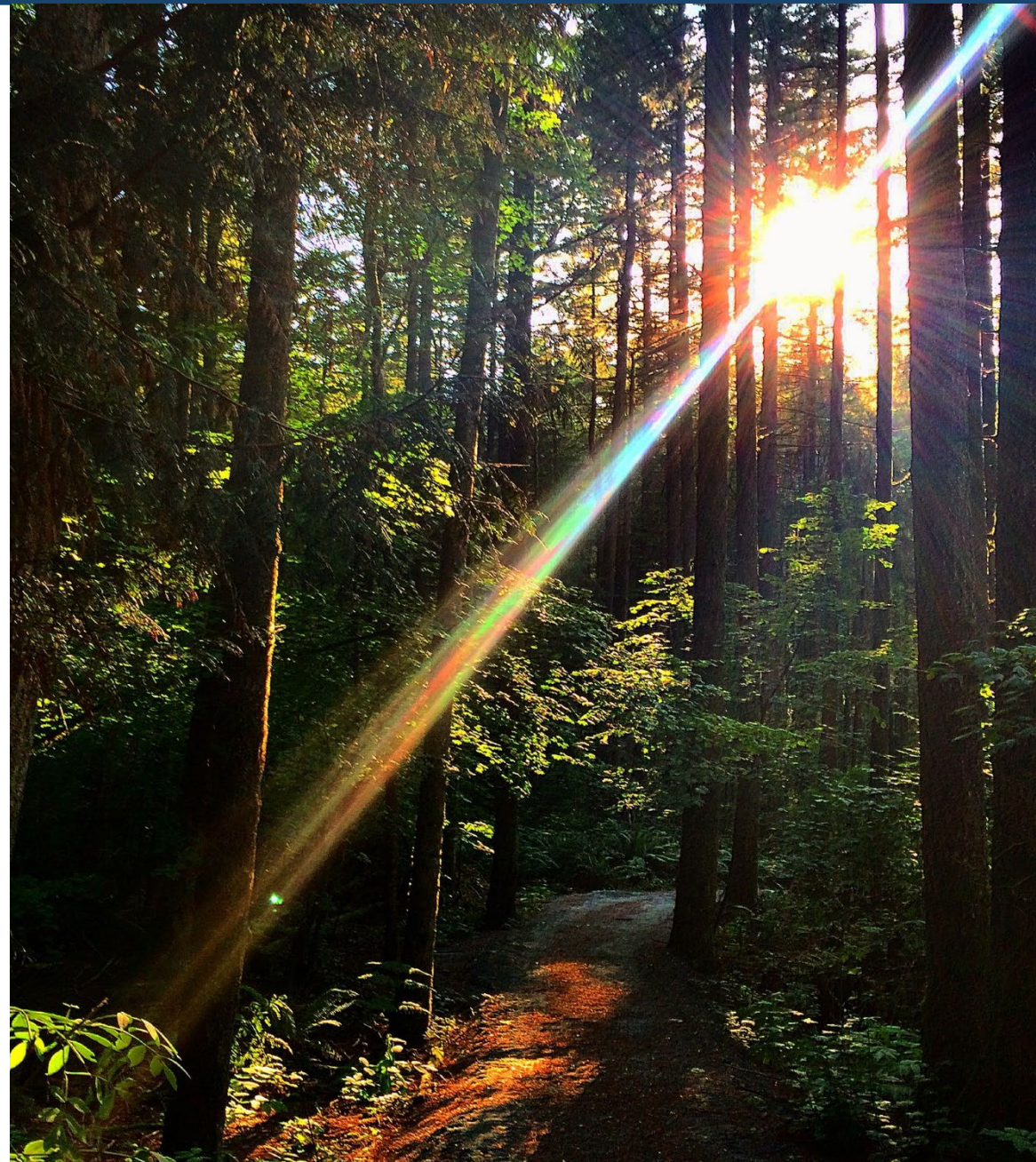
SEWER BYPASS AND GATE REPLACEMENT

City of New Westminster Council Meeting, February 13th, 2023

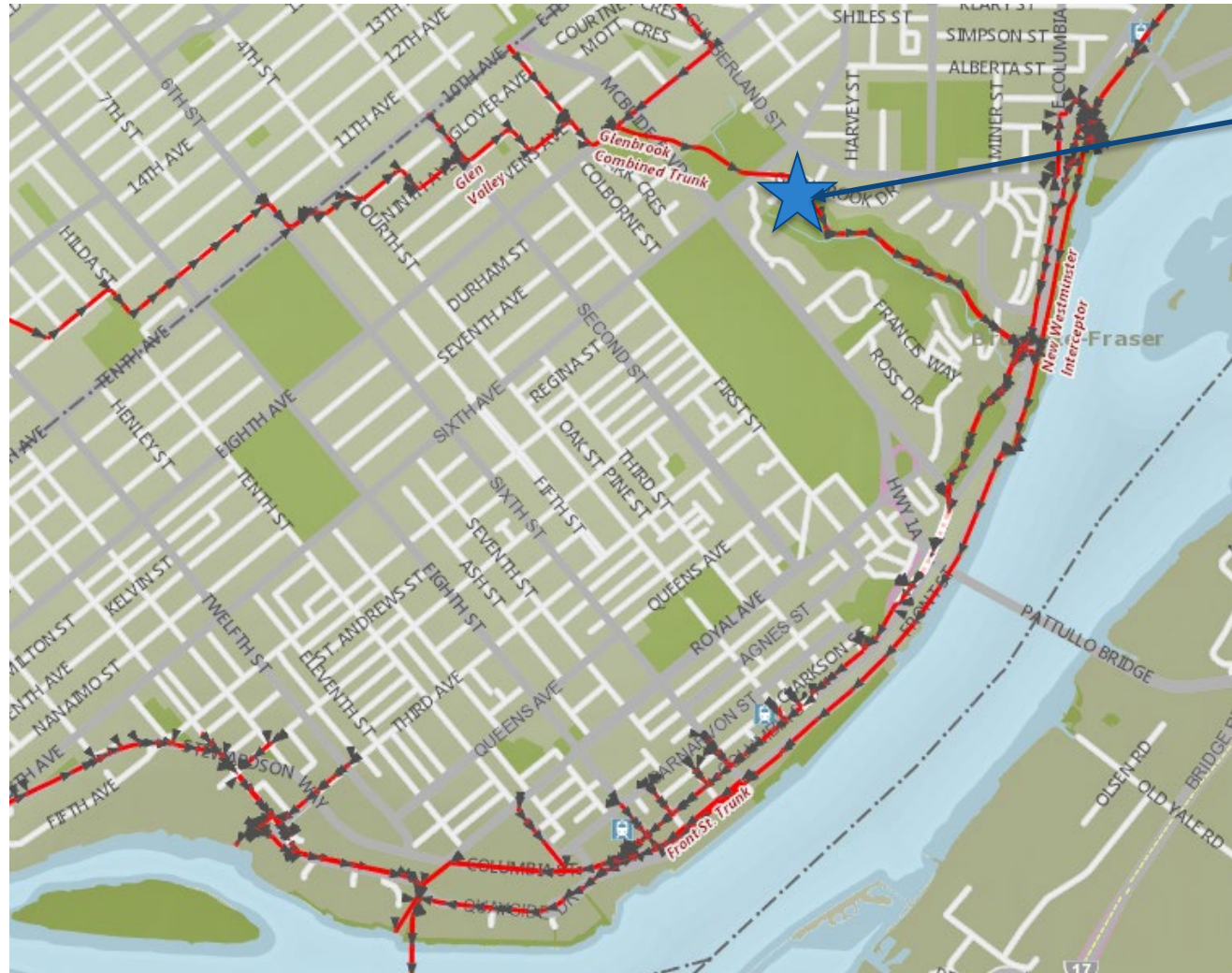
metrovancouver

PRESENTATION OVERVIEW

- Project Location and Background
- Project Objectives
- Project Scope
- Project Schedule
- What does the City require?
- Recommendation



PROJECT LOCATION



Glenbrook
CSO Gate

PROJECT LOCATION AND BACKGROUND

- Located at northwest corner of Glenbrook Ravine park
- A diversion gate is required to divert combined sewer overflow during wet weather





PROJECT OBJECTIVES

- Develop operational control for wet weather events to free up capacity within existing infrastructure
- Improve capacity of the sanitary system during wet weather events
- Reduce overflow

PROJECT SCOPE

- Replace existing slide gate with actuator
- Construct a by-pass system to divert flow during gate replacement



PROJECT SCHEDULE

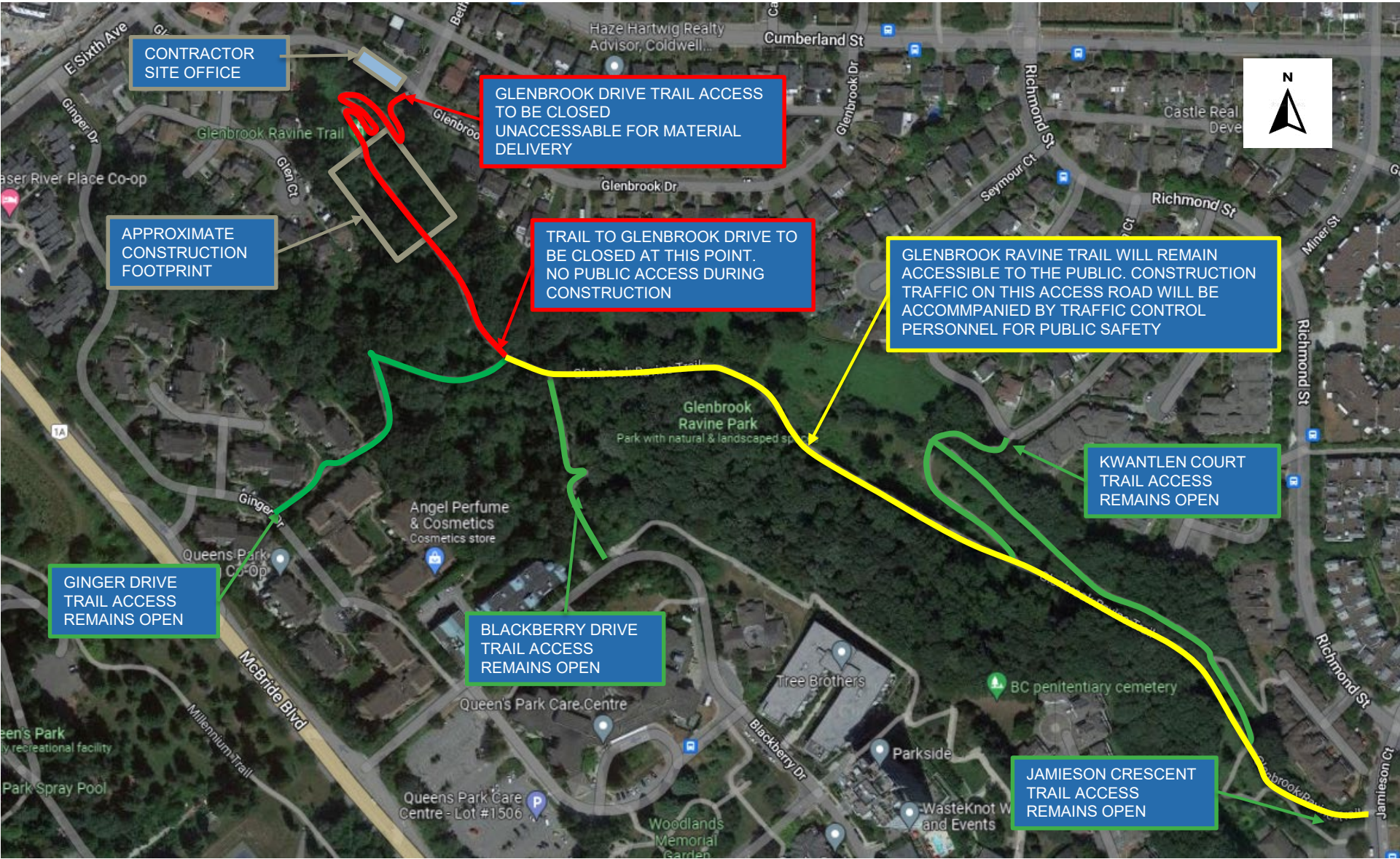




WHAT DOES THE CITY OF NEW WESTMINSTER REQUIRE?

- Maintain access to the trail
- Ensure trail users' safety
- Concerns with settlement – monitor settlement during construction

ACCESS TO TRAILS DURING CONSTRUCTION



TEMPORARY TRAILS INVESTIGATIONS

Evaluated two temporary trails around the construction site. Neither option is recommended.

East Trail	West Trail
<ul style="list-style-type: none">• 23 trees impacted• Compromised ravine stability• High risk to public safety• Construction requires full trail closure	<ul style="list-style-type: none">• 40 trees impacted• Significantly compromise ravine stability• Construction requires full closure of trail



PROPOSED ALTERNATIVE OFFSET MEASURE

- Improve access to Glenbrook Park
- Rehabilitate stair access from Kwantlen Court ~150m staircase



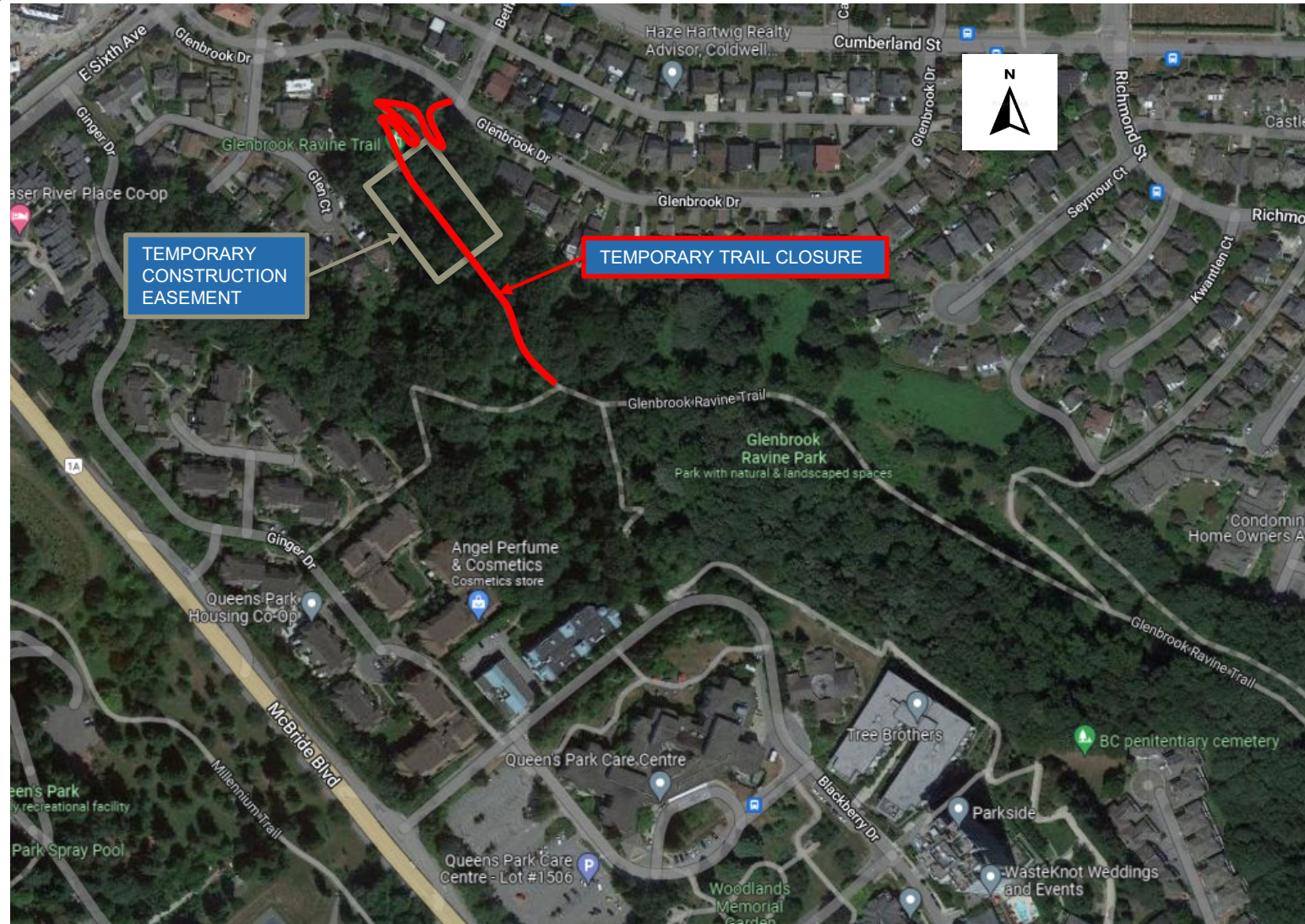
OTHER MITIGATION MEASURES

- Working closely with MV community engagement staff on advance notifications
- Limiting construction equipment delivery time
- Using flaggers during deliveries
- Ongoing settlement monitoring program



RECOMMENDATIONS

- Temporarily closing the trail at the north side of the ravine, during construction, to protect the public
- Approval of the temporary construction easements



Red highlight showing the temporarily closed trail



Questions?

metrovancouver
Together we make our region strong