

CORPORATION OF THE CITY OF NEW WESTMINSTER

BYLAW NO. 8350, 2022

A Bylaw to Close a Portion of Road and Disposal of that Portion of Windsor Road

WHEREAS, pursuant to Section 40 and 94 of the *Community Charter*, Council may, by bylaw, close a portion of a highway to traffic and remove the dedication of the highway if, prior to adopting the bylaw, Council publishes notice of its intention in a newspaper and the public notice posting places and provides an opportunity for persons who consider they are affected by the bylaw to make representations to Council;

AND WHEREAS the Council of the Corporation of the City of New Westminster deems it expedient to close to traffic and remove the dedication of highway of that portion of Windsor Street comprising 404.7 square metres, which was dedicated as highway on Plan 2620, New Westminster District;

AND WHEREAS notices of Council's intention to close the portion of highway to traffic and to remove its dedication as highway, and to dispose of it were published in the newspaper and posted in the public notice posting place, and Council has provided an opportunity for persons who consider they are affected by the closure and disposition to make representations to Council;

AND WHEREAS Council does not consider that the closure of the aforementioned portion of highway will affect the transmission or distribution facilities or works of utility operators;

NOW THEREFORE the Council of the Corporation of the City of New Westminster, in open meeting assembled, ENACTS AS FOLLOWS:

1. This Bylaw may be cited for all purposes as "Windsor Road Closure, Dedication Removal and Disposition Bylaw No. 8350, 2022".
2. Attached to this Bylaw as Schedule "A" and forming part of this Bylaw is a reduced copy of Reference Plan EPP121184, prepared by SHOUPEN LIU, B.C.L.S. #933 and completed and checked on May 4, 2022 (the "the Road Closure Plan").
3. The City hereby authorizes the closure to traffic and removal of highway dedication of the 404.7 square metre portion of highway created by the deposit of Plan EPP121184, New Westminster District and shown outlined in bold and labeled "A" on the Road Closure Plan (the "Closed Road").
4. On deposit of the Road Closure Plan and all other documentation for the closure of the Closed Road in the New Westminster Land Title Office, the Closed Road is closed to public traffic, it shall cease to be public highway, and its dedication as a highway is cancelled.
5. The Corporation of the City of New Westminster is hereby authorized to dispose of and convey the Closed Road in fee simple to the registered owner of the Adjacent Parcels at 108,

112, 114 and 118 Royal Ave and 74 and 82 First Street for the purpose of consolidation of the Closed Road with the Adjacent Parcels at 108, 112, 114 and 118 Royal Ave and 74 and 82.

- 6. The Mayor and Clerk are authorized to execute all deeds of land, plans, and other documentation necessary to effect this road closure and disposition.

READ A FIRST TIME this 13th day of June, 2022.

READ A SECOND TIME this 13th day of June, 2022.

PUBLIC HEARING held this _____ day of _____, 2022

READ A THIRD TIME this _____ day of _____, 2022.

ADOPTED this _____ day of _____, 2022.

Mayor Jonathan X. Côté

Jacque Killawee, City Clerk

SCHEDULE "A"

REFERENCE PLAN OF CLOSED ROAD EPP121184

**REFERENCE PLAN TO ACCOMPANY BYLAW No. 8350-2022,
CITY OF NEW WESTMINSTER TO CLOSE PARTS OF ROAD
BETWEEN OF LOTS 15 AND 18 PLAN 2620,
LOT B PLAN 12722, ALL OF BLOCK 32
GROUP 1 NEW WESTMINSTER DISTRICT**

Pursuant to Section 120 of the Land Title Act.
Pursuant to Section 40 of the Community Charter
BCGS 926.026

This Plan Lies Within Integrated Survey Area No. 49,
City of New Westminster, NAD83 (CSRS) 4.0,0.BC.1,MWRD

SCALE 1:500



All distances are in metres and decimal
Thereof unless otherwise indicated
The intended plot size of this plan is
560mm in width by 432mm in height (C size)
when plotted at a scale of 1:500



Legend

- Denotes Control Monument Found
- Denotes Standard Concrete Post Found
- Denotes Lead Plug Found
- Denotes Standard Iron Pin Found
- Denotes Standard Iron Post Set
- m/2 Denotes Squared Metres
- pp Denotes Peating Plan
- W. Denotes Witness

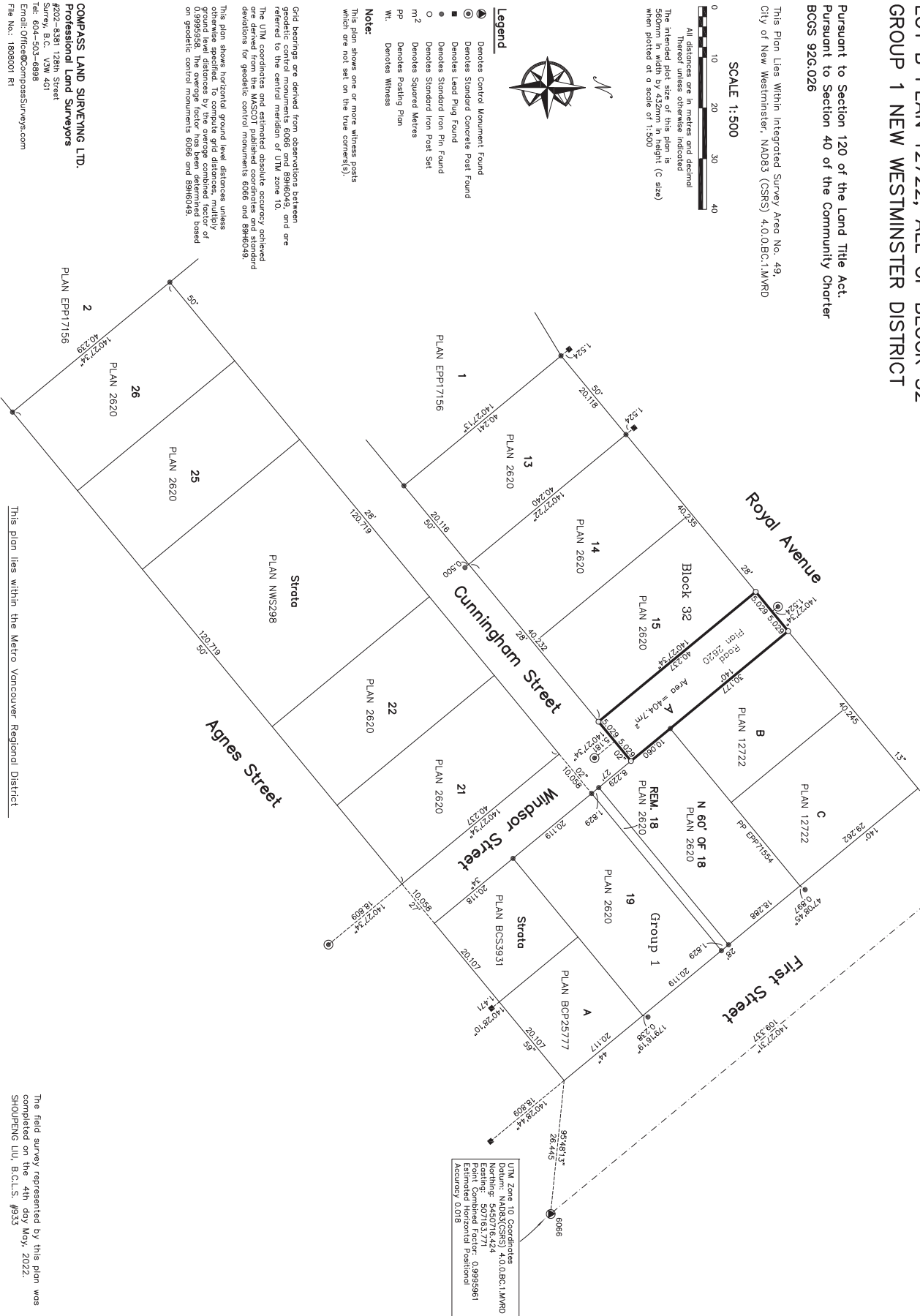
Note:
This plan shows one or more witness posts
which are not set on the true corners(9).

Grid bearings are derived from observations between
control monuments of known position and are
referred to the central meridian of UTM zone 10.
The UTM coordinates and estimated absolute accuracy values
are derived from the MASCOIT published coordinates and standard
deviations for geodetic control monuments 6066 and 89H6049.

This plan shows horizontal ground level distances unless
otherwise specified. To compute grid distances, multiply
the observed distances by the grid conversion factor of
0.9995961. The average factor has been determined based
on geodetic control monuments 6066 and 89H6049.

UTM Zone 10 Coordinates
Datum: NAD83(CSRS) 4.0,0.BC.1,MWRD
Northing: 5450802.252
Easting: 507183.171
Scale Combined Factor: 0.9995961
Estimated Horizontal Positional
Accuracy 0.017

UTM Zone 10 Coordinates
Datum: NAD83(CSRS) 4.0,0.BC.1,MWRD
Northing: 5450716.424
Easting: 507183.171
Scale Combined Factor: 0.9995961
Estimated Horizontal Positional
Accuracy 0.018



COMPASS LAND SURVEYING LTD.
Professional Land Surveyors
#202-4381 128th Street
Surrey, B.C. V4W 4G1
Tel: 604-503-6888
Email: Office@CompassSurveys.com
File No.: 1808001 RI

This plan lies within the Metro Vancouver Regional District

The field survey represented by this plan was
completed on the 4th day May, 2022.
SHOUPENG LIU, B.C.L.S. #933

PLAN EPP121184