

CORPORATION OF THE CITY OF NEW WESTMINSTER

BYLAW NO. 8347, 2022

A Bylaw to Close Surplus Road Allowances in the Queensborough Eastern Neighbourhood Node

WHEREAS, pursuant to Section 40 of the *Community Charter*, Council may, by bylaw, close a portion of a highway to traffic and remove the dedication of the highway;

AND WHEREAS, prior to adopting such a bylaw, Council must publish notice of its intention in a newspaper and the public notice posting places and provide an opportunity for persons who consider they are affected by the bylaw to make representations to Council;

AND WHEREAS the Council of the Corporation of the City of New Westminister wishes to close to traffic and remove the dedication as highway of a portion of Blackley Street comprising 927.8 square metres and a portion of laneway running southeast from Duncan Street to Blackley Street comprising 86.8 square meters;

AND WHEREAS notices of Council's intention to close such portions of highway to traffic and to remove their dedication as highway were published in the newspaper and posted in the public notice posting place, and Council has provided an opportunity for persons who consider they are affected by the closure to make representations to Council;

AND WHEREAS Council does not consider that the closure of the aforementioned portions of highway will affect the transmission or distribution facilities or works of utility operators;

NOW THEREFORE the Council of the Corporation of the City of New Westminister, in open meeting assembled, ENACTS AS FOLLOWS:

1. This bylaw may be cited for all purposes as "Road Closure and Dedication Removal (Queensborough Eastern Neighbourhood Node) Bylaw No. 8347, 2022."
2. The 86.8 square metre, 404.9 square metre and 522.9 square metre portions of highway dedicated by Plan 2620 shown as Pcl A, Pcl B and Pcl C on Plan EPP121324, a copy of which is attached as Schedule A, are closed to all types of traffic and the dedication of those portions of highway is removed.
3. The Corporation of the City of New Westminister is authorized to sell the highway areas to be closed by this bylaw to QBT Properties Limited Partnership, as beneficial owner, and 1180532 BC Ltd. and 117935 BC Ltd. as bare trustees and agents for QBT Properties Limited Partnership, for a purchase price of \$1,090,000.00 for consolidation with adjacent lands owned by the purchasers.
4. The Mayor and Clerk are authorized to execute all agreements and other documents necessary to effect this bylaw and the sale contemplated by this bylaw.

READ A FIRST TIME this 13th day of June, 2022.

READ A SECOND TIME this _____ day of _____, 2022.

PUBLIC HEARING held this _____ day of _____, 2022

READ A THIRD TIME this _____ day of _____, 2022.

ADOPTED this _____ day of _____, 2022.

Mayor Jonathan X. Côté

Jacque Killawee, City Clerk

SCHEDULE "A"

REFERENCE PLAN OF CLOSED ROAD 121324

REFERENCE PLAN TO ACCOMPANY BYLAW NO. 8347, 2022, CITY OF NEW WESTMINSTER
 TO CLOSE PARTS OF ROAD DEDICATED ON PLAN 2620, DISTRICT LOT 757,
 GROUP 1, NEW WESTMINSTER DISTRICT

City of New Westminster BCOS 92G.016
 Pursuant to Section 120 of the Land Title Act
 and Section 40 of the Community Charter

SCALE = 1 : 500
 All distances are in metres

The intended plot size of this plan is 1180mm
 in width by 864mm in height (E Size) when
 plotted at a scale of 1:500

Integrated Survey Area No. 49
 City of New Westminster, SA0033 (CSRS) 4.0.0.BC.1.0VRD

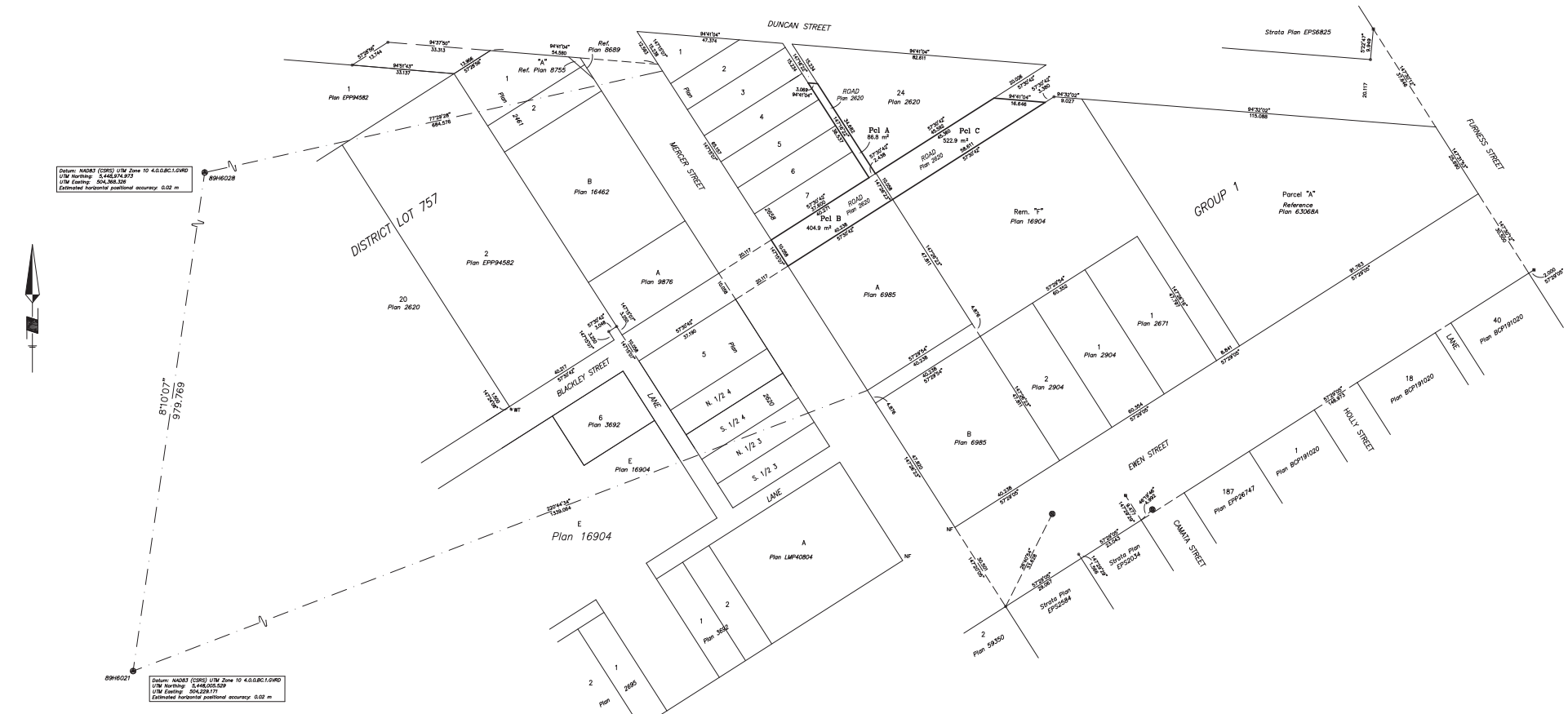
Old Bearings are derived from observations between
 Control Monuments 89H6028 and 89H6021.

The UTM co-ordinates and horizontal positional
 accuracy achieved have been derived from the
 Measnet published coordinates for geospatial control
 monuments 89H6028 and 89H6021.

This plan shows horizontal ground-level distances except
 where otherwise noted. To compute grid distances,
 multiple ground-level distances by the average combined
 factor of 0.9996032 which has been derived from
 geospatial control monument 89H6026.

Datum: NAD83 (CSRS) UTM Zone 10 4.0.0.BC.1.0VRD
 UTM Northing: 5448474.973
 UTM Easting: 206386.228
 Estimated horizontal positional accuracy: 0.02 m

Datum: NAD83 (CSRS) UTM Zone 10 4.0.0.BC.1.0VRD
 UTM Northing: 5448455.529
 UTM Easting: 206329.177
 Estimated horizontal positional accuracy: 0.02 m



BOOK OF REFERENCE	
DESCRIPTION	AREA
Parcel A - Road to Be Closed Plan 2620	86.8 m ²
Parcel B - Road to Be Closed Plan 2620	404.9 m ²
Parcel C - Road to Be Closed Plan 2620	322.9 m ²
Total Area	1014.6 m²

Legend:

- Denotes control monument found
- Denotes standard iron post found
- Denotes standard iron post set
- Denotes standard lead strip found
- Denotes standard rock post found
- Denotes witness
- Denotes nothing found

Note: This plan shows one or more witness points which are not set on the face corner(s).
 Witness points are set along the production of a boundary unless otherwise noted.
 Some symbols and lines have been assigned for clarity.